

# U.S. PUBLIC LAND SURVEY MONUMENT RECORD

Instructions: This record shall show the location of the corner and shall include all of the following nine elements (a through i).

- (a) Identify the corner by reference to the U.S. public land survey system.

○ = Corner monument restored.

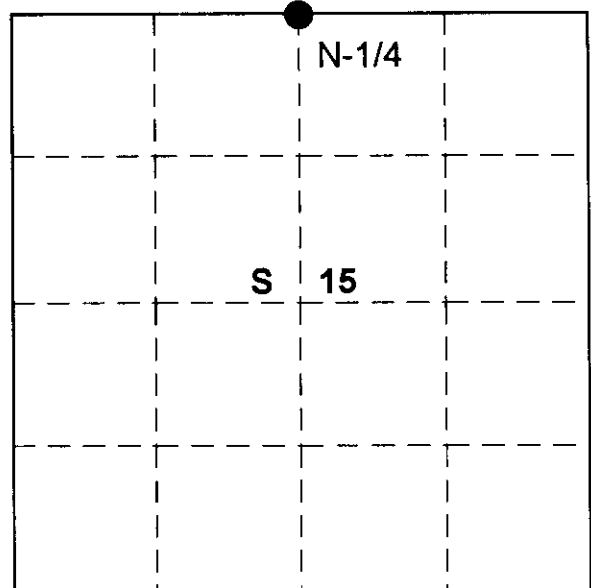
N-1/4 Corner

Sec 15 T 37 N, R 11 E

Type of Monument:

2-1/4" Aluminum pipe W/ 3-1/4" Alloy cap.

Projecting 7" above ground



## ONEIDA COUNTY

- (b) Describe any record evidence, monument evidence, occupational evidence, testimonial evidence or any other material evidence you considered, and whether the monument was found or placed.

Original corner established in 1859 by WM. F. Daugherty, Gov.t Deputy Surveyor from which Aspen 12" bears N37W 21 lks. And Aspen 15' bears S25W 20 lks.

In 1971 Carl Williams purchased the south one half of the southeast quarter section 10, from William Lang. Mr. Williams stated to me in a telephone conversation that Lang had shown him the corner and in 1945 had placed a iron rod beside a wood post to perpetuate the position, also Martin Hansen had blazed a line East from the corner.

Recovered a 3/4" x 7' iron rod and the remains of old wood post. The blazed line east is visible on large Hemlock.

Original notes call for a swamp 2.83 chains east of corner, there is a swamp to the south and at some degree to the east. Ajudgement call..

Relpaced iron rod with a 2-1/4" aluminum Oneida County monument

- © In the plan view drawing below, provide reference ties to at least 4 witness monuments, or, if the location is within a municipality, to at least 2 witness monuments. (Witness monuments shall be made of concrete, natural stone, iron or other equally durable material).

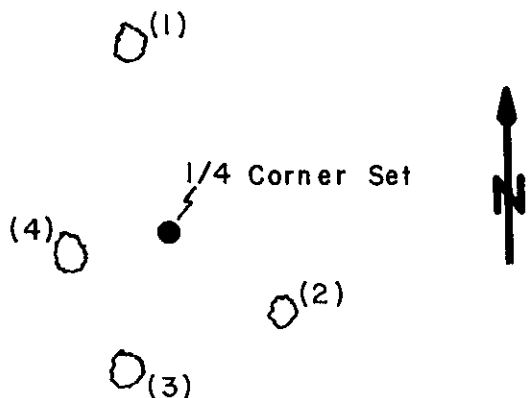
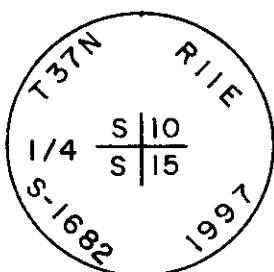
Describe witness monuments:

- (d) Show a plan view drawing depicting the relevant monuments and reference ties which is sufficient in detail to enable accurate relocation of the corner monument if the corner monument is disturbed. Indicate north.

	Marked N.B.Ts			
( 1 )	6" Sugar Maple	N11W	20.61'	
( 2 )	6" Sugar Maple	S54E	15.64'	
( 3 )	9" Sugar Maple	S17W	15.52'	
( 4 )	7" Sugar Maple	S76W	10.20'	

Set plastic post 1.0' south of monument

### Monument Set



County File No. J-15

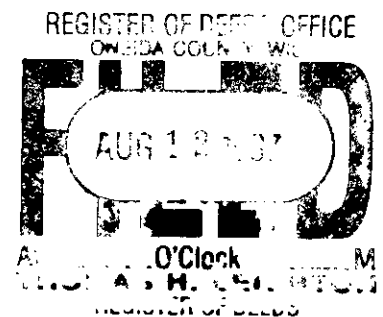
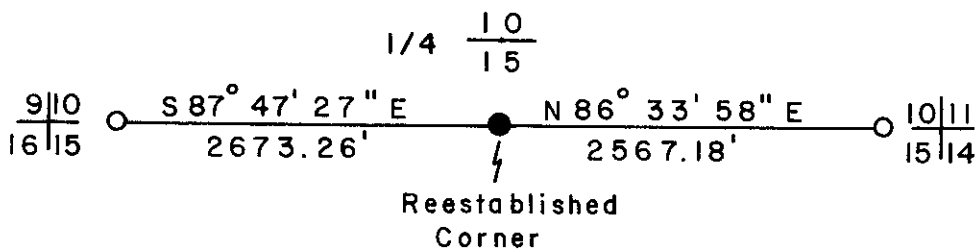
3711100020

(e) Describe an material discrepancy between the location of the corner as restored or reestablished and the location of that corner as previously restored or reestablished by distance and direction. Show the discrepancy on the plan view drawing under (d), above. Show the distances between the corner as previously restored or reestablished and (1) the corner as restored or reestablished, and (2) to at least 2 of the witness monuments shown on the drawing in (d), above.

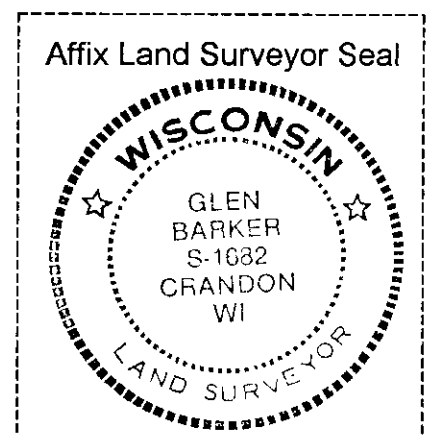
(f) Was the corner restored through acceptance of (1) an obliterated evidence location, or, (2) a found perpetuated location?

**Perpetuated location.**

(g&h) Was the corner reestablished through lost corners proportionate methods? If so, show the method, including the directions and distances to other public land survey corners used as evidence or used for proportioning in determining the corner location?



(i) I, Glen Barker  
 (type or print name) certify that the corner location shown on this record was determined by me or under my direction and control and that this U.S. Public Land Survey Monument is correct and complete to the best of my knowledge and belief.



*Glen Barker*  
 Signature

*8-6-97*  
 Date

15      37      11E  
 SEC      TWN      RNG