

CERTIFIED LAND CORNER RESTORATION

State of Wisconsin }
County of Oneida } ss.

I Terry T. Golding, do hereby certify that on the 5th day of October, 1981, I found evidence of the north west section corner of section 7 Township 38 north, Range 5 east, Fourth Principal Meridian, as described hereon; and that from this evidence I established a new monument and accessories as described hereon to perpetuate the original location of this corner:

Description of original monument and accessories and subsequent restorations:

September 17, 1860 - Alfred Millard, deputy surveyor, set wood post, witnessed by a 16" Y. Pine, N44°E, 93 links (61.38 feet) and by a 16" W. Pine, S5°E, 76 links (50.16 feet).

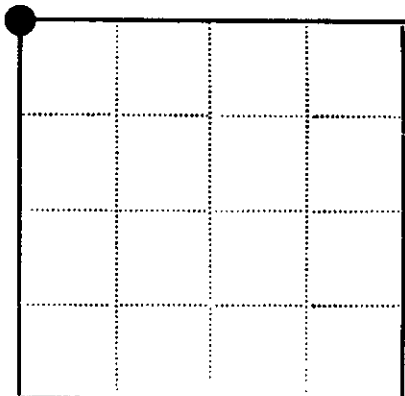
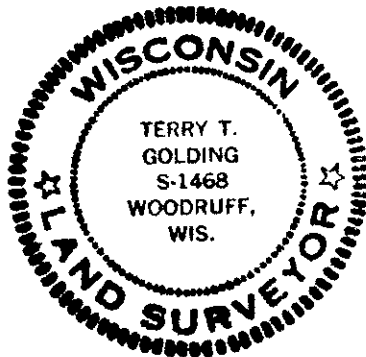
Description of corner evidence found:

1 1/4" dia. iron pipe, up 8"
Found no remains of orig. bearing trees.

I believe this to be the best evidence of the corner position, closely matching original distances from the W 1/4, Section 7 and from the N 1/4, Section 7 also matching 1960 Nepco survey by Ken Voyt.

Description of monument and accessories I established to perpetuate the location of this corner:

Made bearing trees (scribed) with P.K. nails set in lower blaze as follows:
13" W. Pine, S82°E, 32.03'
7" W. Pine, N25°E, 18.15'
7" W. Pine, S50°W, 20.57'



● - Corner monument restored
□ -

Resident witnesses.....

Dated at Minocqua Wisconsin, this 18 day of May 1982.

Signature Terry T. Golding Title Reg. Land Surveyor
(County Surveyor, Registered Land Surveyor, or other duly authorized official)

Surveyors Registration No. S- 1468

Office of REGISTER OF DEEDS County of Oneida

I hereby certify that the within instrument was filed in this office for record on the 17th day of September 1982 and was filed in Book No. Page No. of County Records.

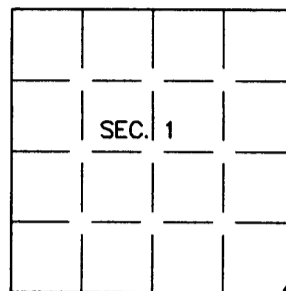
Signature Doris Verage Kuehn Title REGISTER OF DEEDS

Township....., Range....., Section....., Index No....., Page No.....

U.S. PUBLIC LAND SURVEY MONUMENT RECORD

Note: This form is intended and designed to fulfill all requirements of Wisconsin Administrative Code, Chapter A-E 7.08 U.S. Public Land Survey Monument Record (3)(a)(b)(c)(d)(e)(f)(g)(h)(i). An additional sheet may be added if necessary to conform with said requirements.

(a) CORNER LOCATION: Plane Coordinates
 Cor. of Secs. 1, 6, 7 & 12 X:
 Township 38 North Y:
 Range 4 & 5 East of the 4th P.M. Datum:
 Town of Minocqua County of Oneida



(b) HISTORY OF ORIGINAL CORNER ESTABLISHMENT

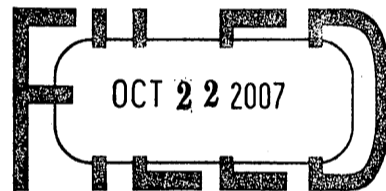
Original Surveyor: Alfred Millard Original Accessories:
 Date of Survey: Commenced Sept., 1860 Y. Pine 16" N44°E, 93 lks.
 Completed Sept., 1860 W. Pine 16" S5°E, 76 lks.
No other timber standing

(b)(f)(g)(h) Description of monument found at this corner and if it was accepted, state all evidence (material, testimonial, occupational, plats, records, other monuments) used as a basis for accepting. If not accepted or if nothing was found, state evidence used as basis for establishing location. If re-established through lost corner proportionate methods, indicate all monuments, distances and directions used to establish. Indicate type of monument and sign past found or set.

18 May 1982: USPLS Monument Record prepared by Terry T. Golding and filed in the office of the Oneida County Register of Deeds. Found 1-1/4 ins. diam. iron pipe based on previously perpetuated location.

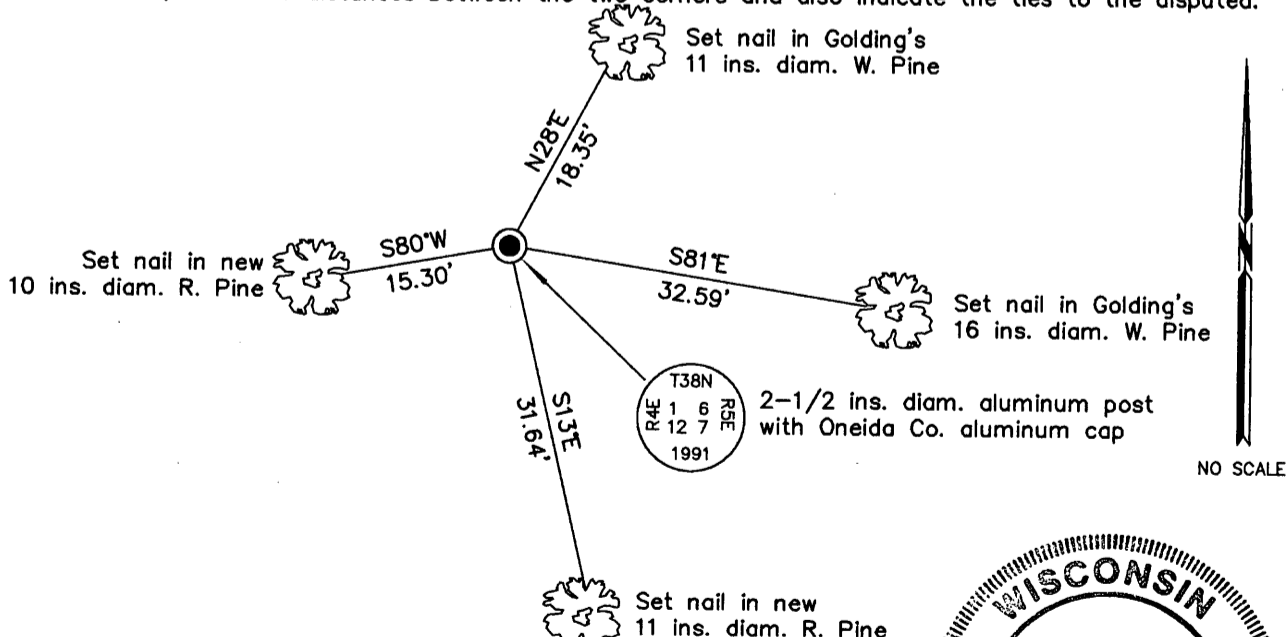
25 April 2006: I found and accepted a 2-1/2 ins. diam. aluminum post with Oneida Co. aluminum cap flush with the ground surface. I found or established accessories as shown below and set a white plastic sign post bearing Northwest, 1 ft. dist.

REGISTER OF DEEDS OFFICE
ONEIDA COUNTY, WIS.



At _____ O'Clock _____ M
THOMAS H. LEIGHTON
REGISTER OF DEEDS

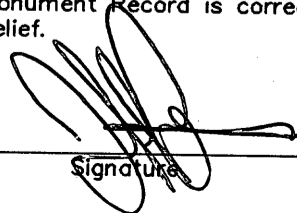
(c)(d)(e) Plan view of corner with ties to at least 4 witness monuments. If in disagreement with previously established corner, show the distances between the two corners and also indicate the ties to the disputed.



(i) I, Jeffrey W. Austin, Registered Land Surveyor No. S-1885, hereby certify upon honor that the corner location on this record was determined by me or under my direction and control and that this U.S. Public Land Survey Monument Record is correct and complete to the best of my knowledge and belief.



INDEX NO. E-25 (3804010000)


Signature

OCT 8, 2007
Date