

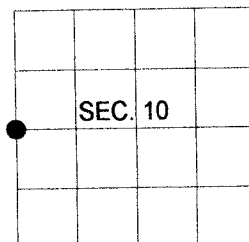
U.S. PUBLIC LAND SURVEY MONUMENT RECORD

Note: This form is intended and designed to fulfill all requirements of Wisconsin Administrative Code, Chapter A-E 7.08 U.S. Public Land Survey Monument Record (3) (a) (b) (c) (d) (e) (f) (g) (h) (i). An additional sheet may be added if necessary to conform with said requirements.

a) Corner Location:

1/4 Corner of Sections 9 & 10
Township 38 North, Range 4 East
Town of Minocqua,
Oneida County, Wisconsin

Oneida County Coordinates:
Datum: NAD 83 2011
N: 222677.33
E: 118053.60



b) History of Original Corner establishment:

Original Surveyor: Alex Anderson
Date of Suvey: Commenced: April, 1865
Completed: May, 1865

Original Accessories:
Hemlock 9" S 85° W, 21 lks.
Hemlock 11" S 55° E, 10 lks.

(b) (f) (g) (h) Description of monument found at this corner and if it was accepted, state all evidence (material, testimonial, occupational, plats, records, other monuments) used as a basis for accepting. If not accepted or if nothing was found, state evidence used as basis for establishing location. If re-established through lost corner proportionate methods, indicate all monuments, distances and directions used to establish. Indicate type of monument and sign post found or set.

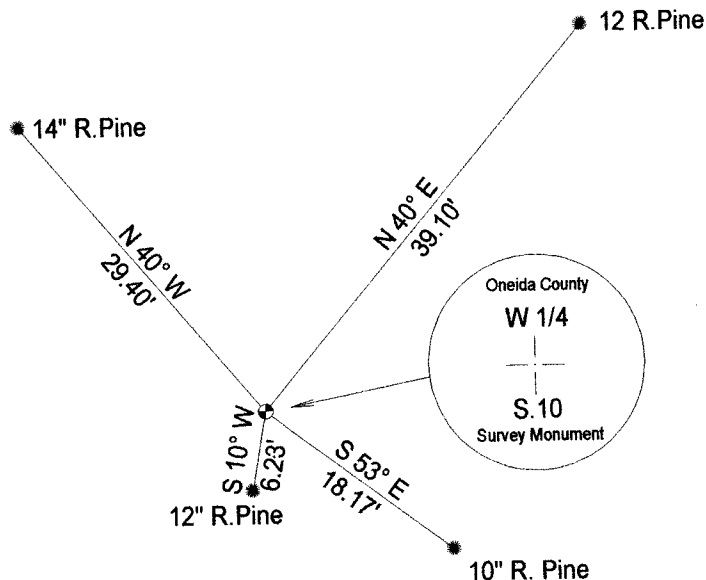
2020 - I searched and found no corner monument or accessories. Set Oneida County aluminum monument by single proportion between the NW and SW corners of section 10.
NW corner, found aluminum Mon., bears N 00°12'00" E, 2637.01'. SW corner, found aluminum Mon., bears S 00°12'00" W, 2637.01'
Made 4 new B.T.s.

REGISTER OF DEEDS OFFICE
ONEIDA COUNTY
FILED

JUL 29 2020

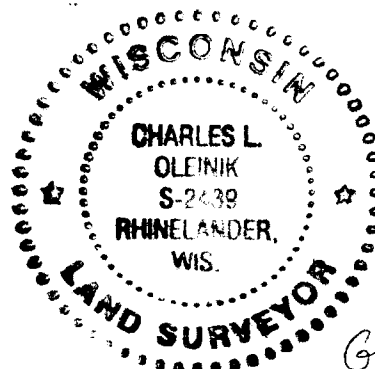
KYLE J. FRAMSON
REGISTER OF DEEDS

(c) (d) (e) Plan view of corner with ties to at least 4 witness monuments. If in disagreement with previously established corner, show the distances between the two corners and also indicate the ties to the disputed.



(i) I Charles L. Oleinik, Professional Land Surveyor No: S-2439-8, hereby certify that the corner location on this record was determined by me or under my direction and control and that this U.S. Public Land Survey Monument Record is correct and complete to the best of my knowledge and belief.

Charles L. Oleinik _____ 7-9-2020
Date



G-13

3804092000