

U.S. PUBLIC LAND SURVEY MONUMENT RECORD

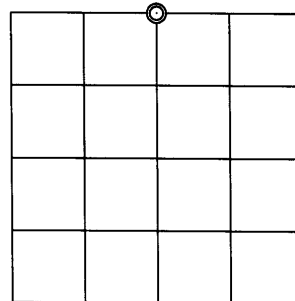
Note: This form is intended and designed to fulfill all requirements of the Wisconsin Administrative Code, Chapter A-E 7.08 U.S. Public Land Monument Record (3)(a)(b)(c)(d)(e)(f)(g)(h)(i). An additional sheet may be added if necessary to conform with said requirements.

(a) CORNER LOCATION:

North 1/4 corner of Section 14
Township 38 North
Range 4 East
Town of Minocqua
County of Oneida

O. C. COORDINATES

North: 220318.0834
126094.2388
Control Station: OC 295
Latitude: 45°46'27.13998"
Longitude: 89°56'42.55785"
Datum: NAD 83 (91) Method: RTK-GPS



(b) HISTORY OF ORIGINAL CORNER ESTABLISHMENT

Original Surveyor: Alex Anderson, Deputy Surveyor
Date of Survey: Commenced April 26, 1865
Completed May 8, 1865

Original B.T.'S: Birch 9", N50°E, 21 links (13.86')
W. Pine, 12", S18°W, 40 links (26.40')

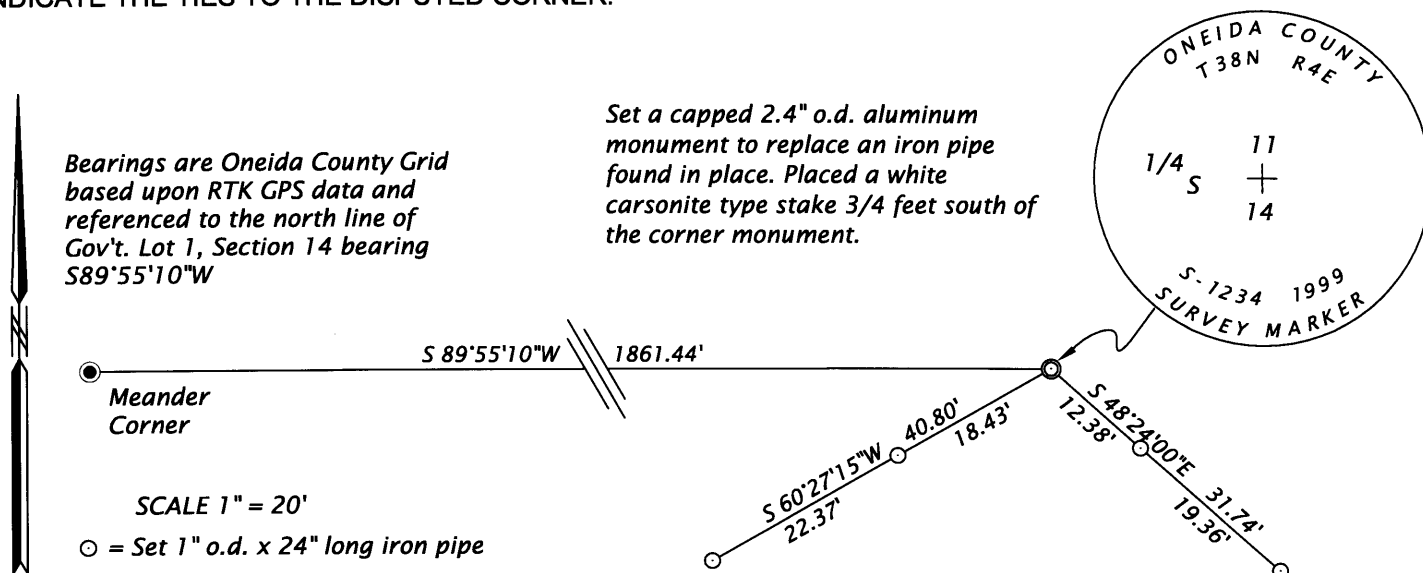
SECTION 14

(f)(g)(h) DESCRIPTION OF MONUMENT FOUND AT THIS CORNER AND IF IT WAS ACCEPTED, STATE ALL EVIDENCE (MATERIAL, TESTIMONIAL, OCCUPATIONAL, PLATS, RECORDS, OTHER MONUMENTS) USED AS A BASIS FOR ESTABLISHING LOCATION. IF NOT ACCEPTED OF IF NOTHING WAS FOUND, STATE EVIDENCE USED AS BASIS FOR ESTABLISHING LOCATION. IF REESTABLISHED THROUGH LOST CORNER PROPORTIONATE METHODS, INDICATE ALL MONUMENTS, DISTANCES AND DIRECTIONS USED TO ESTABLISH. INDICATE TYPE OF MONUMENT AND SIGN POST FOUND OR SET.

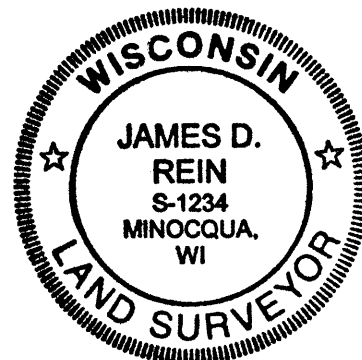
November, 1969 - John H. Fisher, RLS No. 836, Northwoods Surveyors Inc. map filed as C 1569 in the Oneida County Surveyor's Office, identifies the corner being monumented by an iron pipe set. My research of the survey notes and computation records for this survey, now in custody of the firm of Foltz and Associates, indicates this corner was reestablished by proportionate measurement.

May 18, 1999 - James D. Rein, RLS no. 1234 - We recover a 1.25" inside diameter iron pipe and replace it with a capped 2.4" outside diameter x 60" long aluminum monument on the north side of cranberry dike road. Set four iron pipe reference monuments as shown in the plan. Also set a white carsonite type stake 3/4 feet south of the corner.

(c)(d)(e) PLAN VIEW OF CORNER WITH TIES TO AT LEAST 4 WITNESS MONUMENTS. IF IN DISAGREEMENT WITH PREVIOUSLY ESTABLISHED CORNER, SHOW THE DISTANCE BETWEEN THE TWO CORNERS AND ALSO INDICATE THE TIES TO THE DISPUTED CORNER.



(i) I, JAMES D. REIN, REGISTERED LAND SURVEYOR NO. S-1234 HEREBY CERTIFY THAT THE CORNER LOCATION ON THIS RECORD WAS DETERMINED BY ME OR UNDER MY DIRECTION AND CONTROL AND THAT THIS U.S. PUBLIC LAND SURVEY MONUMENT RECORD IS CORRECT AND COMPLETE TO THE BEST OF MY KNOWLEDGE AND BELIEF.



SIGNATURE *James D. Rein* DATE *March 14, 2009*
3804110020