

At \_\_\_\_\_ O'Clock \_\_\_\_\_ M

U.S. PUBLIC LAND SURVEY MONUMENT RECORD

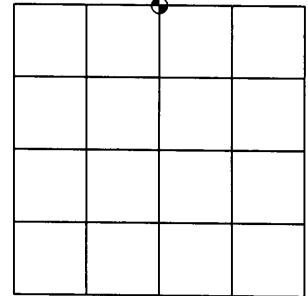
Note: This form is intended and designed to fulfill all requirements of the Wisconsin Administrative Code, Chapter A-E 7.08 U.S. Public Land Monument Record (3)(a)(b)(c)(d)(e)(f)(g)(h)(i). An additional sheet may be added if necessary to conform with said requirements.

(a) CORNER LOCATION:

North quarter corner of Section 28  
Township 38 North  
Range 4 East  
Town of Minocqua  
County of Oneida

COORDINATES

North: 209536.2544  
East: 115448.4893  
Control Station: O.C. #294  
Latitude: 45°45'07.97313"N  
Longitude: 89°58'44.27806"W  
Datum: NAD 83 (1991) Method: RTK



SECTION 28

(b) HISTORY OF ORIGINAL CORNER ESTABLISHMENT

Original Surveyor: Alex Anderson  
Date of Survey: Commenced - April 1865  
Completed - May 1865

Original B.T.'S: Ironwood 6" N40°W 6 links  
Hemlock 6" S35°E 26 links

(f)(g)(h) DESCRIPTION OF MONUMENT FOUND AT THIS CORNER AND IF IT WAS ACCEPTED, STATE ALL EVIDENCE (MATERIAL, TESTIMONIAL, OCCUPATIONAL, PLATS, RECORDS, OTHER MONUMENTS) USED AS A BASIS FOR ESTABLISHING LOCATION. IF NOT ACCEPTED OF IF NOTHING WAS FOUND, STATE EVIDENCE USED AS BASIS FOR ESTABLISHING LOCATION. IF REESTABLISHED THROUGH LOST CORNER PROPORTIONATE METHODS, INDICATE ALL MONUMENTS, DISTANCES AND DIRECTIONS USED TO ESTABLISH. INDICATE TYPE OF MONUMENT AND SIGN POST FOUND OR SET.

December 8th, 1961 - Map prepared by W.H. Stuth on February 14, 1989 (Filed in NEPCO Book No. 2 Page No. 41 at the Oneida County Land Records office) indicates an "Iron Pipe - Brass Cap" set by single proportionate measurement. Said map also indicates two new Bearing Trees: Maple 4" S31°W 63.0', and a Maple 3" N12°E 74.5'.

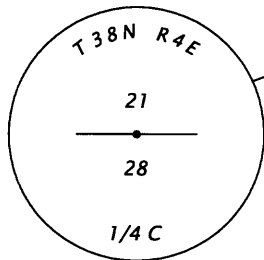
April 9, 2008 - James D. Rein, RLS No. 1234, Recover a 2" diameter iron pipe with a brass cap up 19", presumed to be the NEPCO "Iron Pipe - Brass Cap" therefore I accept it as marking the corner location. Monument and accessories as shown in plan.

(c)(d)(e) PLAN VIEW OF CORNER WITH TIES TO AT LEAST 4 WITNESS MONUMENTS. IF IN DISAGREEMENT WITH PREVIOUSLY ESTABLISHED CORNER, SHOW THE DISTANCE BETWEEN THE TWO CORNERS AND ALSO INDICATE THE TIES TO THE DISPUTED CORNER.

Bearings are magnetic

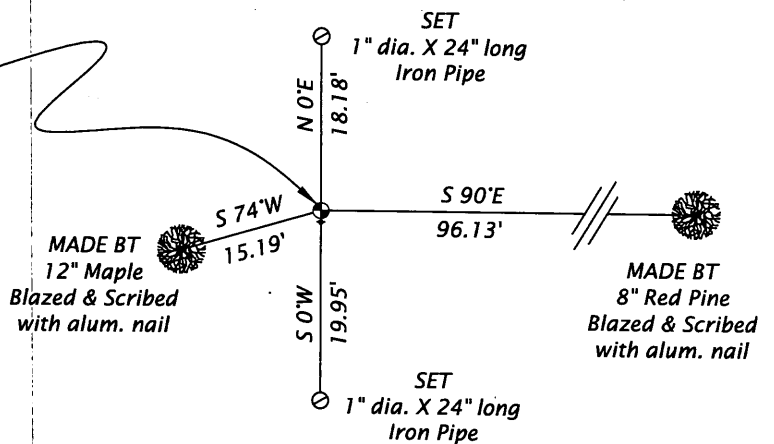


Scale 1" = 20'



FOUND

Brass capped 2.0" dia. iron pipe  
Set white carsonite post 1.0' South



(i) I, JAMES D. REIN, REGISTERED LAND SURVEYOR NO. S-1234 HEREBY CERTIFY THAT THE CORNER LOCATION ON THIS RECORD WAS DETERMINED BY ME OR UNDER MY DIRECTION AND CONTROL AND THAT THIS U.S. PUBLIC LAND SURVEY MONUMENT RECORD IS CORRECT AND COMPLETE TO THE BEST OF MY KNOWLEDGE AND BELIEF.

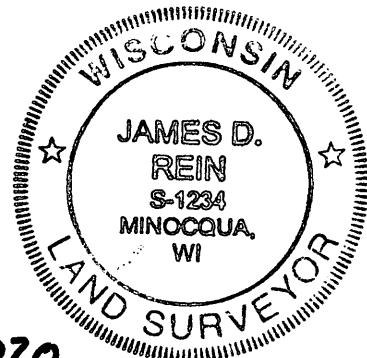
*[Handwritten Signature]*

April 17, 2008

SIGNATURE

DATE

3804210020



INDEX NO. B-11