

U.S. PUBLIC LAND SURVEY MONUMENT RECORD

ONEIDA COUNTY

Note: This form is intended and designed to fulfill all requirements of the Wisconsin Administrative Code, Chapter A-E 7.08 U.S. Public Land Monument Record (3)(a)(b)(c)(d)(e)(f)(g)(h)(i). An additional sheet may be added if necessary to conform with said requirements.

JUN 22 2017

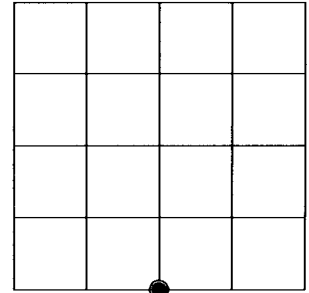
(a) CORNER LOCATION:
 South Quarter Corner of Section 3
 Township 38 North
 Range 5 East
 Town of Minocqua
 County of Oneida

WISCRS - Oneida County
 North: 225649.550 USft
 East: 152466.850 USft
 Latitude: 45° 48' 16.17053" N
 Longitude: 89° 50' 54.34924" W
 Datum: NAD 83(2011)
 GNSS Method: RTK - Offset
 GNSS Control: WISCRS VRS
 Record North: 225649.553 USft (Calculate)
 Record East: 152466.885 USft (Calculate)
 Record Datum: NAD 83(1991)

AT O'CLOCK M
 KYLE J. FRANSON
 REGISTER OF DEEDS

(RECORDING AREA)

SECTION 3



(b) HISTORY OF ORIGINAL CORNER ESTABLISHMENT

Original Surveyor: Alexander Anderson
 Date of Survey: Commenced October 6, 1863
 Completed October 13, 1863
 Original B.T.'S: Birch 7" N 14°W, 37 lks.
 W. Pine 15" S 63°E 63 lks.

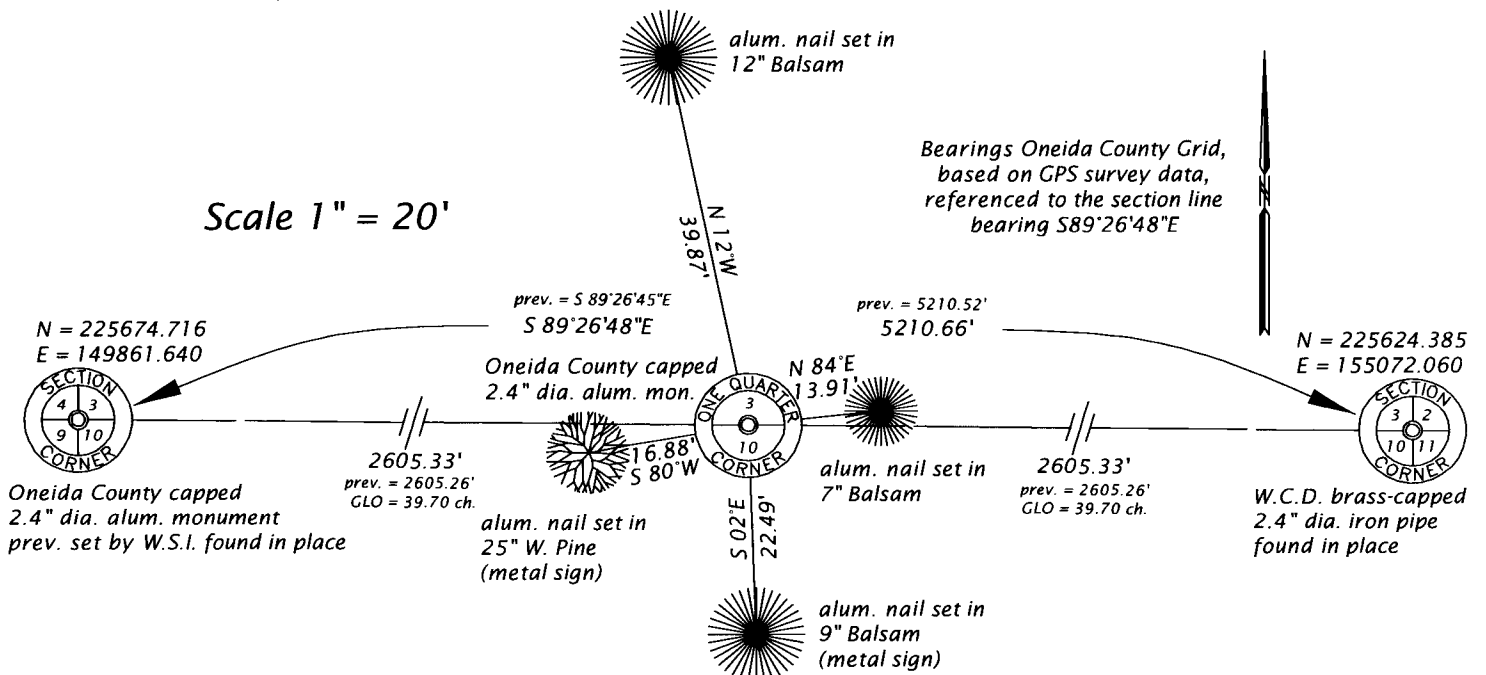
(f)(g)(h) DESCRIPTION OF MONUMENT FOUND AT THIS CORNER AND IF IT WAS ACCEPTED, STATE ALL EVIDENCE (MATERIAL, TESTIMONIAL, OCCUPATIONAL, PLATS, RECORD, OTHER MONUMENTS) USED AS A BASIS FOR ESTABLISHING LOCATION. IF NOT ACCEPTED OR IF NOTHING WAS FOUND, STATE EVIDENCE USED AS BASIS FOR ESTABLISHING LOCATION. IF REESTABLISHED THROUGH LOST CORNER PROPORTIONATE METHODS, INDICATE ALL MONUMENTS, DISTANCES AND DIRECTIONS USED TO ESTABLISH. INDICATE TYPE OF MONUMENT AND SIGN POST FOUND OR SET.

January 17, 2003 - James D. Rein, RLS No. 1234, (Wilderness Surveying, Inc., Map No. 02-135, filed as C1948 in county surveyor's office, for a survey in Section 4, T38N, R5E), required the reestablishment of the lost corner common to Sections 3-4-9-10. I searched for evidence of this corner in November of 2002, determined that this corner was lost and reestablished the mathematical position as shown on our map.

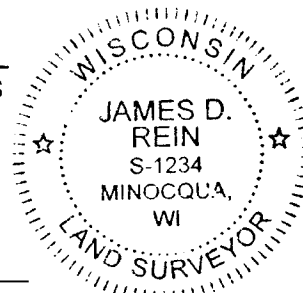
June 7, 2017 - James D. Rein, PLS No. 1234, having previously determined this corner lost, we reestablished the corner by single proportionate measurement, between the monumented section corners, set an Oneida County capped 2.4" dia. x 30" long aluminum monument, placed poly gaurd post 1 foot north, and made reference ties as shown in the plan.

The coordinate value shown has been verified by at least one of the following methods: 1) comparison to a previously GPS determined published value; 2) the value is the average of two or more GPS observations at a markedly different time; 3) one or more distances were measured back to the GPS observed corner from temporary GPS observed offset locations.

(c)(d)(e) PLAN VIEW OF CORNER WITH TIES TO AT LEAST 4 WITNESS MONUMENTS. IF IN DISAGREEMENT WITH PREVIOUSLY ESTABLISHED CORNER, SHOW THE DISTANCE BETWEEN THE TWO CORNERS AND ALSO INDICATE THE TIES TO THE DISPUTED CORNER.



(i) I, JAMES D. REIN, PROFESSIONAL LAND SURVEYOR NO. S-1234 HEREBY CERTIFY THAT THE CORNER LOCATION ON THIS RECORD WAS DETERMINED BY ME OR UNDER MY DIRECTION AND CONTROL AND THAT THIS U.S. PUBLIC LAND SURVEY MONUMENT RECORD IS CORRECT AND COMPLETE TO THE BEST OF MY KNOWLEDGE AND BELIEF.



[Handwritten Signature]
 SIGNATURE

6-12-17
 DATE

INDEX NO. E-15
 3805030020