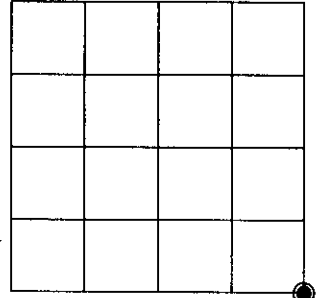


# U.S. PUBLIC LAND SURVEY MONUMENT RECORD

Note: This form is intended and designed to fulfill all requirements of Wisconsin Administrative Code, Chapter A-E 7.08 U.S. Public Land Survey Monument Record (3)(a)(b)(c)(d)(e)(f)(g)(h)(i). An additional sheet may be added if necessary to conform with said requirements.

(a) CORNER LOCATION: Oneida County Coordinates  
Southeast corner of Sec. 4  
 Township 38 North  
 Range 5 East  
 Town/~~City/Village~~ Minocqua  
 County of Oneida  
 North 225674.7552  
 East 149861.7447  
 Control Station # 278 S  
 Latitude 45°48'31.23574"N  
 Longitude 89°51'31.13730"W  
 Datum NAD-83, '91 Method Stake by  
 RTK direct



(b) HISTORY OF ORIGINAL CORNER ESTABLISHMENT

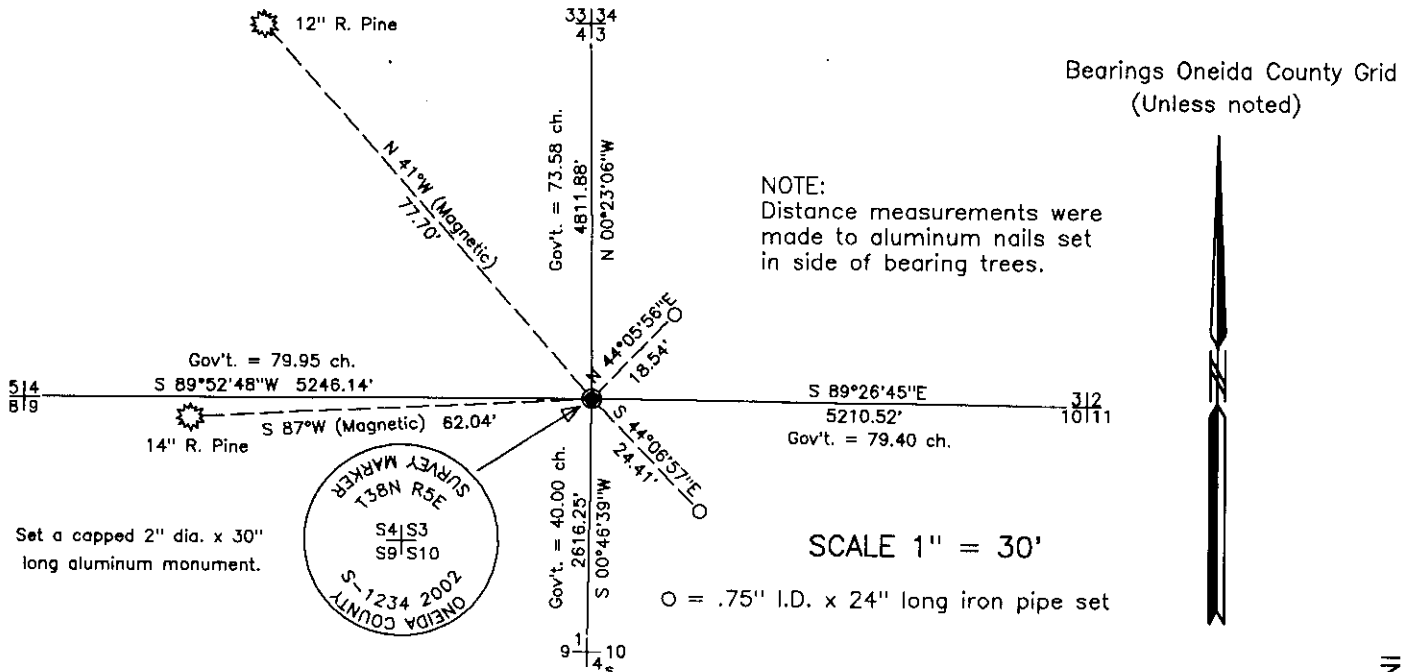
Original Surveyor: Alexander Anderson Original B.T.'S SECTION 4  
 Date of Survey: Commenced Oct. 6, 1863 Birch 10" N 33 1/2°E, 30 lks.  
 Completed Oct. 13, 1863 Hemlock 8" S 24°W, 6 lks.

(f)(g)(h) Description of monument found at this corner and if it was accepted, state all evidence (material, testimonial, occupational, plats, records, other monuments) used as a basis for establishing location. If not accepted or if nothing was found, state evidence used as basis for establishing location. If reestablished through lost corner proportionate methods, indicate all monuments, distances and directions used to establish. Indicate type of monument and sign post found or set.

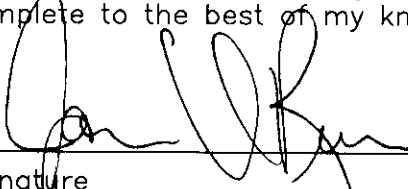
Nov. 8, 1933 - R. H. Hall, Oneida County survey record: Pace S. (Var. 3°E) on Assumed line between 3 & 4 from angle point on traverse of #2. Plat of this traverse indicates 550 steps S. should reach Cor. 3-4-8-9. Find no sign of line, 569 paces to old road. I fail to find corner. Supposed to be .16 S. of road.

November 16, 2002 - James D. Rein, R.L.S. No. 1234: I am unable to recover any physical evidence of the original corner, or any record for the perpetuation of this corner. Corner position is located in a recently harvested Red Pine planting. Any evidence of the old trail has been destroyed by logging equipment. I, thus determine the corner position lost and we re-establish it on December 11, 2002, by double proportionate measurement, with a capped 2" dia. x 30" long flange bottom aluminum monument. We also set a county stake along side of the monument and make reference ties as shown in the plan view.

(c)(d)(e) Plan view of corner with ties to at least 4 witness monuments. If in disagreement with previously established corner, show the distance between the two corners and also indicate the ties to the disputed corner.



(i) I, James D. Rein, Registered Land Surveyor No. 1234, hereby certify that the corner location on this record was determined by me or under my direction and control and that this U.S. Public Land Survey Monument Record is correct and complete to the best of my knowledge and belief.

  
 Signature \_\_\_\_\_ Date January 17, 2003



3805040000

INDEX NO. E 13