

# U.S. PUBLIC LAND SURVEY MONUMENT RECORD

REGISTER OF DEEDS OFFICE  
ONEIDA COUNTY

**FILED**

JAN 16 2012

Note: This form is intended and designed to fulfill all requirements of the Wisconsin Administrative Code, Chapter A-E 7.08 U.S. Public Land Monument Record (3)(a)(b)(c)(d)(e)(f)(g)(h)(i). An additional sheet may be added if necessary to conform with said requirements.

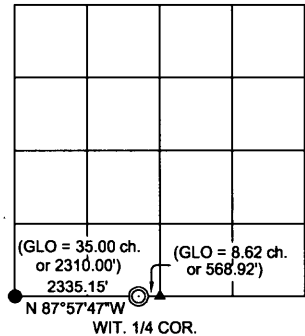
AT \_\_\_\_\_ O'CLOCK \_\_\_\_\_ M  
**THOMAS H. LEIGHTON**  
REGISTER OF DEEDS

**(a) CORNER LOCATION:**  
Witness to South 1/4 corner of Section 7  
Township 38 North  
Range 5 East  
Town of Minocqua  
County of Oneida

**COORDINATES**  
North: 220535.971  
East: 136202.998  
Control Station: Oneida County GPS # 207  
Latitude: 45°49'03.59887"  
Longitude: 89°56'30.36164"  
Datum: NAD-83, '91  
Method: Direct RTK - GPS

(RECORDING AREA)

SECTION 7



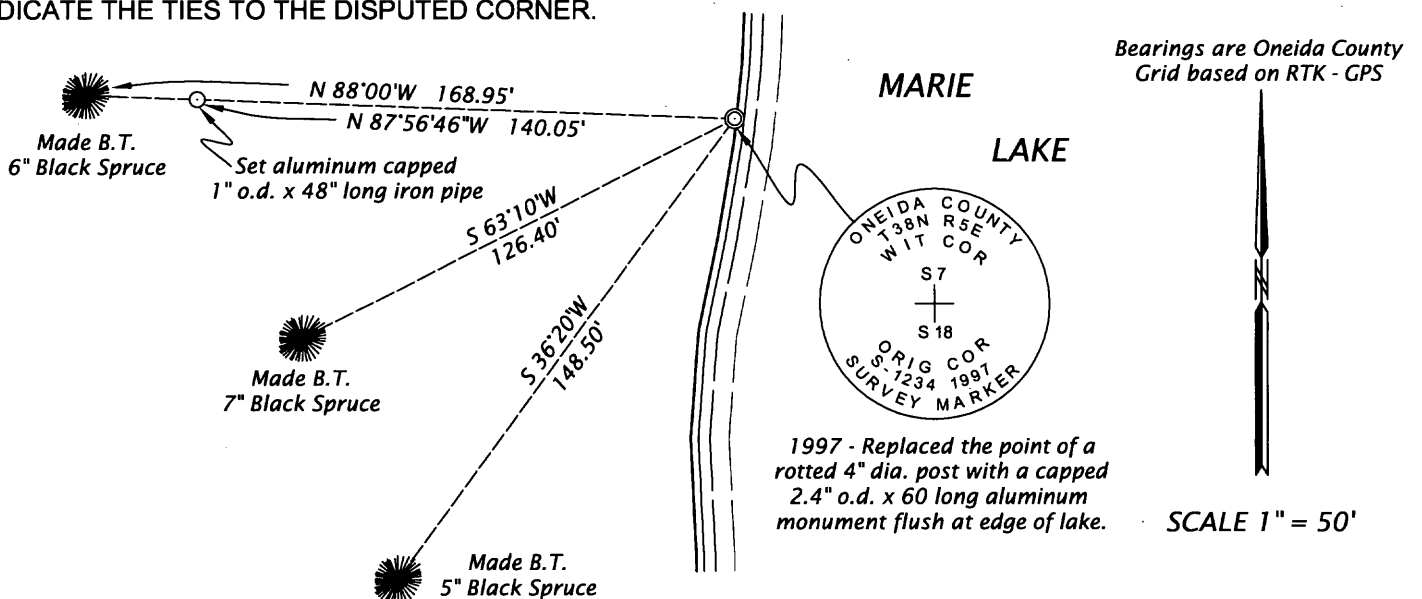
**(b) HISTORY OF ORIGINAL CORNER ESTABLISHMENT**  
Original Surveyor: Alexander Anderson, Deputy Surveyor  
Date of Survey: Commenced October 6, 1865  
Completed October 13, 1865  
Original B.T.'s: Spruce 8" N 41°W, 10 links  
Spruce 8" N 25°W, 20 links

**(f)(g)(h) DESCRIPTION OF MONUMENT FOUND AT THIS CORNER AND IF IT WAS ACCEPTED, STATE ALL EVIDENCE (MATERIAL, TESTIMONIAL, OCCUPATIONAL, PLATS, RECORDS, OTHER MONUMENTS) USED AS A BASIS FOR ESTABLISHING LOCATION. IF NOT ACCEPTED OF IF NOTHING WAS FOUND, STATE EVIDENCE USED AS BASIS FOR ESTABLISHING LOCATION. IF REESTABLISHED THROUGH LOST CORNER PROPORTIONATE METHODS, INDICATE ALL MONUMENTS, DISTANCES AND DIRECTIONS USED TO ESTABLISH. INDICATE TYPE OF MONUMENT AND SIGN POST FOUND OR SET.**

July 30, 1997 - James D. Rein, R.L.S. No. 1234 - Field crew, Perry Totsch & Anthony Dallman, recover a 4" diameter x 30" long point of old post rotted flush at edge of lake. I accept the rotted post as the original GLO monument and we replace it with a capped 2.4" diameter x 60" long aluminum monument. We also set a white poly stake N80°W, 2.0 feet from the corner monument.

December 31, 2011 - James D. Rein, R.L.S. No. 1234 - I recover the monument as described above. The corner is located in a former beaver overflowed sparse Tamarack and Black Spruce swamp on the westerly edge of Marie Lake. The corner monument is harmonious with the GLO record, located approximately 140 feet easterly from the northeasterly edge of upland area and further evidenced by a very old 5" diameter blazed rampike located 1.5 feet east and 1 foot north of the corner. I set an aluminum capped 1 inch outside diameter x 48 inch long iron pipe for a reference and three scribed bearing trees as shown below in the plan. Measurements from corner to bearing trees were made to aluminum nails set in the center of the root crown on the side of the tree facing corner.

**(c)(d)(e) PLAN VIEW OF CORNER WITH TIES TO AT LEAST 4 WITNESS MONUMENTS. IF IN DISAGREEMENT WITH PREVIOUSLY ESTABLISHED CORNER, SHOW THE DISTANCE BETWEEN THE TWO CORNERS AND ALSO INDICATE THE TIES TO THE DISPUTED CORNER.**



(i) I, JAMES D. REIN, PROFESSIONAL LAND SURVEYOR NO. S-1234 HEREBY CERTIFY THAT THE CORNER LOCATION ON THIS RECORD WAS DETERMINED BY ME OR UNDER MY DIRECTION AND CONTROL AND THAT THIS U.S. PUBLIC LAND SURVEY MONUMENT RECORD IS CORRECT AND COMPLETE TO THE BEST OF MY KNOWLEDGE AND BELIEF.

*[Signature]*  
SIGNATURE \_\_\_\_\_ DATE January 6, 2012



INDEX NO. 52-3