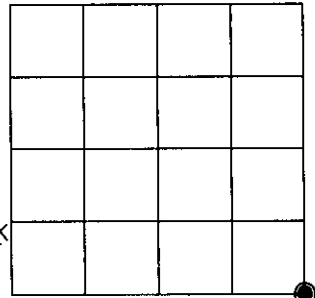


U.S. PUBLIC LAND SURVEY MONUMENT RECORD

Note: This form is intended and designed to fulfill all requirements of Wisconsin Administrative Code, Chapter A-E 7.08 U.S. Public Land Survey Monument Record (3)(a)(b)(c)(d)(e)(f)(g)(h)(i). An additional sheet may be added if necessary to conform with said requirements.

(a) CORNER LOCATION: Oneida County Coordinates
Southeast corner of Sec. 9
 Township 38 North
 Range 5 East
 Town/~~City/Town~~ Minocqua
 County of Oneida

North 220427.6970
 East 149818.2051
 Control Station # 278 S
 Latitude 45°48'31.23574"N
 Longitude 89°51'31.13730"W
 Datum NAD-83, '91 Method Direct-RTK



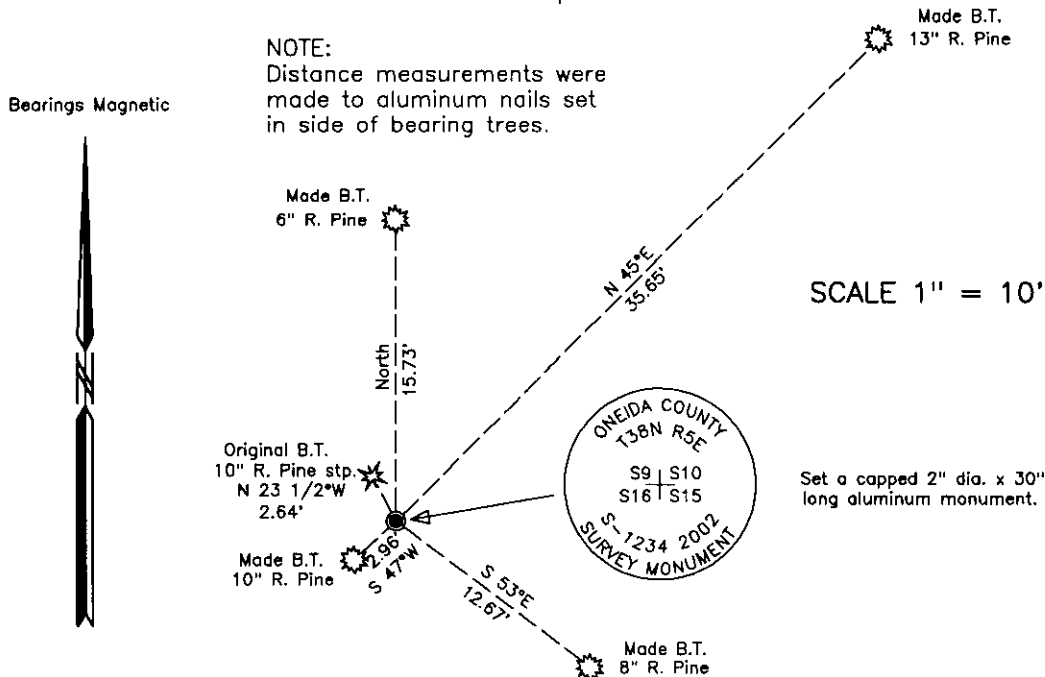
(b) HISTORY OF ORIGINAL CORNER ESTABLISHMENT

Original Surveyor: Alexander Anderson Original B.T.'S SECTION 9
 Date of Survey: Commenced Oct. 6, 1863 Y. Pine 10" N 23 1/2°W, 4 lks.
 Completed Oct. 13, 1863 Spruce 9" S 65°E, 12 lks.

(f)(g)(h) Description of monument found at this corner and if it was accepted, state all evidence (material, testimonial, occupational, plats, records, other monuments) used as a basis for establishing location. If not accepted or if nothing was found, state evidence used as basis for establishing location. If reestablished through lost corner proportionate methods, indicate all monuments, distances and directions used to establish. Indicate type of monument and sign post found or set.

November 14, 2002 – James D. Rein, R.L.S. No. 1234: Recovered 10" dia. x 3 feet high R. Pine stump showing sign of fire and very good boxing. The axe measuring notch is very evident on the stump. This position is located 50 feet south of the swamp edge, versus 1 chain by government record and bears S 00°10'30"W, 2631.06 feet (Gov't. Record 2640 feet) from the original 1/4 corner common to Sections 9 and 10, and N 89°40'45"E, 2558.84 feet (Gov't. Record 2625.15 feet) from the original 1/4 corner common to Sections 9 and 16. I monument the corner position on December 22, 2002, by record bearing and distance from the recovered original bearing tree, with a capped 2" dia. x 30" long flange bottom aluminum monument extending 4 in. above ground level. I also set a plastic county post N 60°E, 0.9 feet from the corner monument and make additional bearing trees as shown on the plan.

(c)(d)(e) Plan view of corner with ties to at least 4 witness monuments. If in disagreement with previously established corner, show the distance between the two corners and also indicate the ties to the disputed corner.



(i) I, James D. Rein, Registered Land Surveyor No. 1234, hereby certify that the corner location on this record was determined by me or under my direction and control and that this U.S. Public Land Survey Monument Record is correct and complete to the best of my knowledge and belief.

[Signature] January 17, 2003
 Signature Date

3805090000



INDEX NO. 113