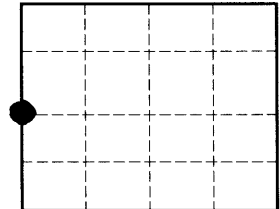


U. S. PUBLIC LAND SURVEY MONUMENT RECORD

Note: This form is intended and designed to fulfill all requirement of Wisconsin Administrative Code, Chapter A-E 7.08 U. S. Public Land Survey Monument Record (3) (a) (b) (c) (d) (e) (f) (h) (i). An additional sheet may be added if necessary to conform with said requirements.



Section 11

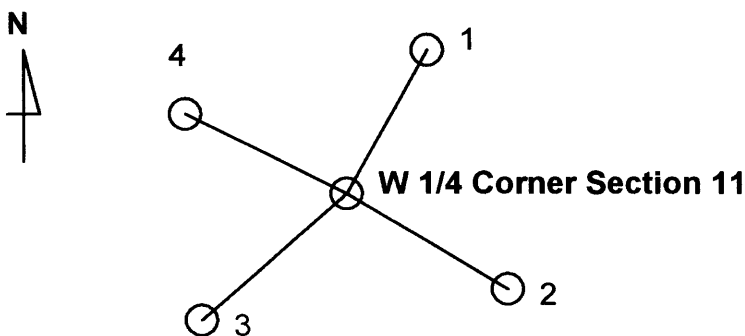
a) Corner location: **W 1/4 Corner Section 11, Township 38 North, Range 5 East, Town of Minocqua, Oneida County, Wisconsin**

b) (f) (g) (h) Description of monument found at this corner and if it was accepted, state all evidence (material, testimonial, occupational, plats, records, other monuments) used as a basis for accepting. If not accepted or if nothing was found, state evidence used as basis for establishing location. If reestablished through lost corner proportionate methods, indicate all monuments, distances and directions used to establish type of monument found or set and sign post.

1. **Original corner set by Deputy U. S. Surveyor Alexander Anderson Oct. 1863: Wood Post : Bt's White Pine 18", South, 170 lks (112.2') and Birch 5' N35°W, 29 lks (19.14').**
2. **Ray Hall, July 12, 1934 Ran random between S-10 and S-11. At 39.73 chains south of NW Corner establishes W 1/4 of Section 11. No mention of monument set or bearing trees.**
3. **Wm Stuth shows Brass Cap on Sketch prepared 2/15/89 of Survey by NEPCO on 3/9/62.**

I find and accept 2.2" capped monument as marking W 1/4 of Section 11. Monument stamped T38N, R5E, 1940, and 1/4 S. Also stamped S 10 and S 11 on each side of cap. Set Fiberglass Post

c) (d) (e) Plan view of corner with ties to at least 4 witness monuments. If in disagreement with previously established corner, show the distances between the two corners and also indicate the ties to the disputed corner.



Accessory Number	Description	Bearing	Distance to Center of Accessory (* to nail at base of
1	24" FENO with Brass Cap	N30°-10'E	31.62'
2	1"x24" iron pipe	S72°-10'E	32.80'
3	24" FENO with Brass Cap	S56°-39'W	36.88'
4	1"x24" iron pipe	N56°-17'W	34.59'

i) I, **John B. Margitan** certify that the corner location on this record was determined by me or under my direction and control and that this U. S. Public Land Survey Monument Record is correct and complete to the best of my knowledge and belief.

Signature John B. Margitan Date 3/9/2004

3805102000

6-1-04