

At Thomas H. O'Cloek M
U.S. PUBLIC LAND SURVEY MONUMENT RECORD

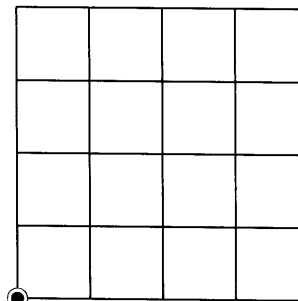
Note: This form is intended and designed to fulfill all requirements of the Wisconsin Administrative Code, Chapter A-E 7.08 U.S. Public Land Monument Record (3)(a)(b)(c)(d)(e)(f)(g)(h)(i). An additional sheet may be added if necessary to conform with said requirements.

(a) CORNER LOCATION:

Southwest corner of Section 14
Township 38 North
Range 5 East
Town of Minocqua
County of Oneida

O. C. COORDINATES

North: 215150.8854
East: 155208.6680
Control Station: O.C. 206
Latitude: 45° 45' 23.77331" N
Longitude: 89° 50' 35.03977" W
Datum: NAD - 83 (91)
Method: Direct RTK - GPS



SECTION 14

(b) HISTORY OF ORIGINAL CORNER ESTABLISHMENT

Original Surveyor: Alexander Anderson, Deputy Surveyor Original B.T.'s: Y. Pine 20" S77°E, 178 links (117.48 feet)
Date of Survey: Commenced October 6, 1863 W. Pine 5" N78°E, 177 links (116.82 feet)
Completed October 13, 1863

(f)(g)(h) DESCRIPTION OF MONUMENT FOUND AT THIS CORNER AND IF IT WAS ACCEPTED, STATE ALL EVIDENCE (MATERIAL, TESTIMONIAL, OCCUPATIONAL, PLATS, RECORDS, OTHER MONUMENTS) USED AS A BASIS FOR ESTABLISHING LOCATION. IF NOT ACCEPTED OF IF NOTHING WAS FOUND, STATE EVIDENCE USED AS BASIS FOR ESTABLISHING LOCATION. IF REESTABLISHED THROUGH LOST CORNER PROPORTIONATE METHODS, INDICATE ALL MONUMENTS, DISTANCES AND DIRECTIONS USED TO ESTABLISH. INDICATE TYPE OF MONUMENT AND SIGN POST FOUND OR SET.

August 4th, 1933 - R. H. Hall, Deputy County Surveyor, Transcribed notes in Hall Book 1, page 171 - Find stp. of Origl. Y. Pine B.T. on NW end of island and very old wood post in marsh, which may be the original post. Course from stp. right and distance = 1.784 - Can find no trace of the W. Pine. Set new post at the corner and mark: Var 3°28' E {W. Pine 12" S52°-09'E, 1.99 ch. (131.34 feet); Y. Pine 20" N32°-12'E, 2.134 ch. (140.84 feet); Orig. B.T. S76°-50'E, 1.785 ch. (117.81 feet)} - Left bank of Tomahawk River bears West, 6.40 ch.

February 15, 1989 - W. H. Stuth, NEPCO Surveyor - Drafts a map in Section 15, T38N, R5E, which represents a NEPCO survey completed on December 27, 1961 - Map legends this corner as being monumented by "iron pipe or brass cap".

April 4, 2009 - James D. Rein, RLS No. 1234 - Recovered brass capped 2.0" o.d. galv. iron pipe extending 2 feet above the ground leaning in a northerly direction. Because the monument is good condition and its position is harmonious with Hall's position, I set it plumb and flush with the ground. I also set a white poly stake 0.3 feet southeast of the corner monument and made additional bearing tree ties as shown below in the plan view. The corner is located in a wetland area and the bearing trees are on upland islands.

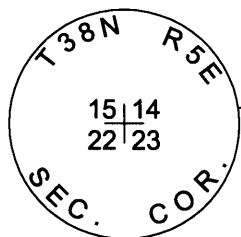
(c)(d)(e) PLAN VIEW OF CORNER WITH TIES TO AT LEAST 4 WITNESS MONUMENTS. IF IN DISAGREEMENT WITH PREVIOUSLY ESTABLISHED CORNER, SHOW THE DISTANCE BETWEEN THE TWO CORNERS AND ALSO INDICATE THE TIES TO THE DISPUTED CORNER.

Bearings are Oneida County Grid, based on RTK-GPS measurements

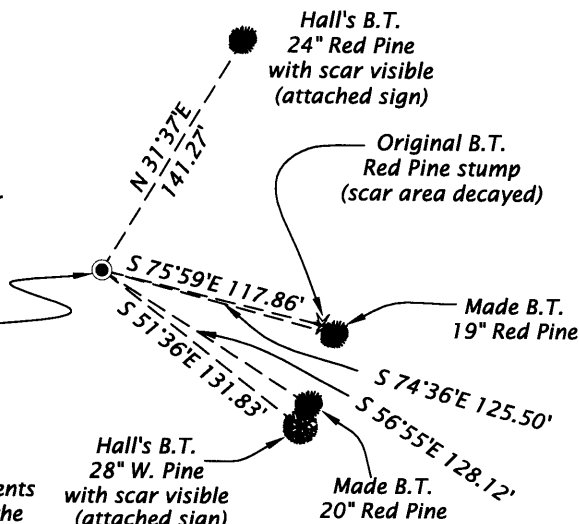


SCALE 1" = 100'

Recovered brass capped 2.0" o.d. iron pipe extending 2 feet above ground level and leaning northerly. Because the monument is good condition I reset it flush in the swamp. I also set a white poly stake 0.3 feet southeast of the corner



Bearing tree distance measurements made to aluminum nails set in the center of the root crown on the side of the tree as facing corner.



(i) I, JAMES D. REIN, REGISTERED LAND SURVEYOR NO. S-1234 HEREBY CERTIFY THAT THE CORNER LOCATION ON THIS RECORD WAS DETERMINED BY ME OR UNDER MY DIRECTION AND CONTROL AND THAT THIS U.S. PUBLIC LAND SURVEY MONUMENT RECORD IS CORRECT AND COMPLETE TO THE BEST OF MY KNOWLEDGE AND BELIEF.

SIGNATURE

April 8th, 2009

DATE

3805150000



INDEX NO. N-17