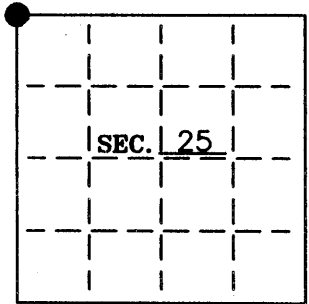


**U. S. PUBLIC LAND SURVEY MONUMENT RECORD**

Note: This form is intended and designed to fulfill all requirements of Wisconsin Administrative Code—Chapter A-E 7.08 U. S. Public Land Survey Monument Record (3)(a)(b)(c)(d)(e)(f)(g)(h)(i). An additional sheet may be added if necessary to conform with said requirements.

(a) CORNER LOCATION: State Plane Coordinates  
NW corner of Sec. 25 X ---  
 Township 38 North Y ---  
 Range 5 East Datum Base ---  
 Town Minoqua County of Oneida



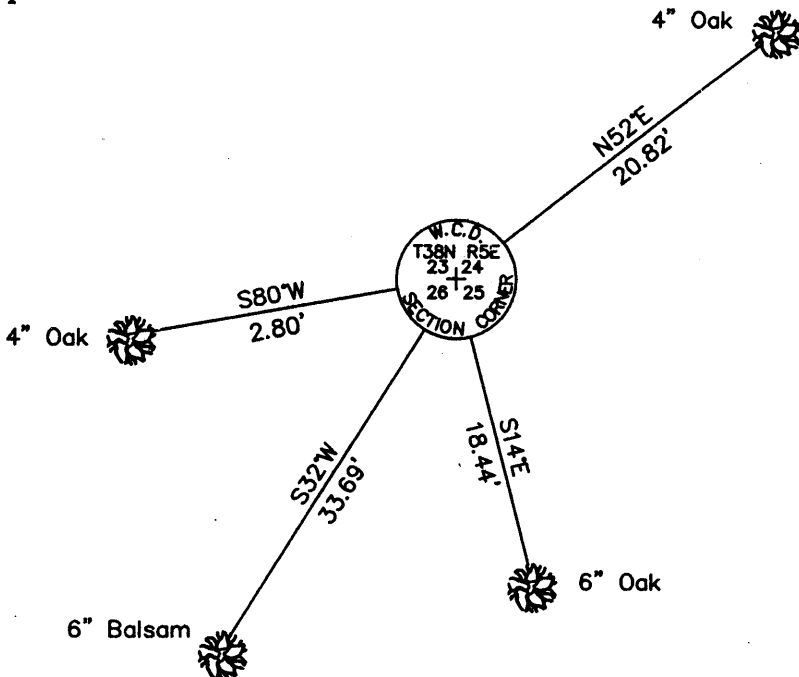
(b) HISTORY OF ORIGINAL CORNER ESTABLISHMENT:  
 Original Surveyor: Alexander Anderson  
 Date of Survey: Commenced 1863  
 Completed 1863

Original B.T.'S  
 12" Aspen, N44°W, 38 lks  
 6" Birch, N50°E, 16 lks

(b)(f)(g)(h) Description of monument found at this corner and if it was accepted—state all evidence (material—testimonial—occupation—plats—records—other monuments) used as a basis for accepting. If not accepted or if nothing was found state evidence used as basis for establishing location. If reestablished through lost corner proportionate methods indicate all monuments—distances and directions used to establish. Indicate type of monument and sign post found or set.

- 1909— D.H. Vaughan's field notes indicate that he was at the corner and found the original Aspen BT, a stub 15' high with the markings still ok. He set a post and made a new BT. 8" W. Pine, S33°W, 41 lks.
- 1934— CCC field notes indicate they found Vaughan's post under 14" of snow. W. Pine BT (down) S44°W, 44 lks. They set a new Tamarack post at the corner location. New BT's: 7" Jack Pine, S30-1/2°W, 1.678 ch., 4" W. Pine, S2-3/4°E, 1.157 ch., 3" Yellow Pine, N26-1/4°E, 1.04 ch.
- 1966— W.H. Stuth found a monument at the NW corner of Section 25. BT's: 14" W. Pine, S4°E, 76.4' (CCC), 6" W. Pine, S77°W, 16.5' (new).
- 1967— L.W. Scott found a W.C.D. monument at the NW corner of Section 25.
- 1991— D. McMullen found a brass-capped iron pipe at the NW Corner of Section 25. See Oneida County Surveyor's Map #L1124.
- 2005— I found a 3" W.C.D. brass cap on a 2-1/2" iron pipe up 10". I found none of the BT's called for by the CCC, for the area had been logged within 5 to 10 years. I accepted the W.C.D. brass cap for the corner and witnessed the corner as shown below.

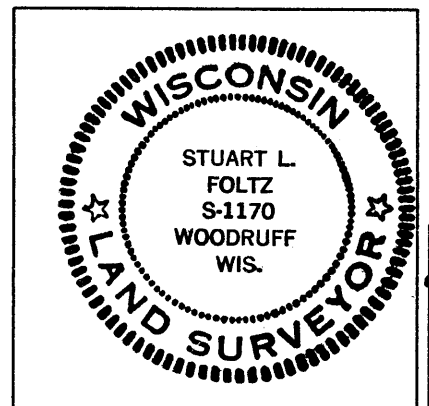
(c)(d)(e) Plan view of corner with ties to at least 4 witness monuments. If in disagreement with previously established corner—show the distances between the two corners and also indicate the ties to the disputed.



- Set PK nails in four new double-blazed BT's.
- Distances shown to the BT's are measured to the nails.
- Did not set white plastic guard post due to frost.

(i) I Stuart L. Foltz S-1170 hereby certify that the corner location on this record was determined by me or under my direction and control and that this U.S. Public Land Survey Monument Record is correct and complete to the best of my knowledge and belief.

Stuart L. Foltz Signature Foltz and Associates, Inc.  
2/8/2007 Date



INDEX NO. R 21

3805230000