

This form is intended to fulfill the requirements of Chapter A-E7.08 (3)(a) thru (i) U.S. Public Land Survey Monument Location Record, Wisconsin Administrative Code. Use the reverse side of form for continuation.

U.S. PUBLIC LAND SURVEY MONUMENT LOCATION RECORD

USPLS CORNER: SOUTH WITNESS MC SECTION: 30 TOWNSHIP: 38 NORTH RANGE: 6 EAST
 NAME OF WATERWAY FOR M.C. CORNER : WEST TWIN LAKE SECTION LINE: WEST
 (CITY)(VILLAGE)(TOWN) OF: HAZELHURST COUNTY OF: ONEIDA

Description of monument found or placed and all other evidence used as the basis for monument location; including monuments and measurements required if the corner location was reestablished by lost corner proportionate methods. Also indicate name of the original surveyor, original survey date and the corner monument, bearing trees, witness or other reference monuments established, including measured bearing and distance ties, from available survey records.

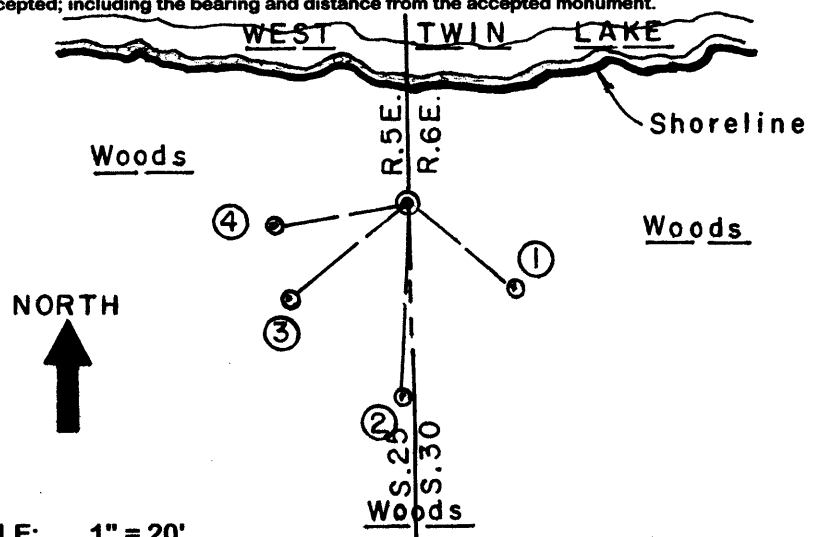
Found old record 1" dia. iron pipe with coupling at top 16" above grade and a standard white poly "T" marker post 6" NNW at this corner location. Corner falls about 12' South of vegetated lake shoreline bearing East/West in a narrow wetland bank area at bottom of steep slope up to the South. I left old iron pipe in place and drove a standard 2" dia. by 30" long aluminum pipe monument with stamped Oneida County cap over it to 12" above grade. This corner previously located by GPS control survey per Oneida County survey records. Corner is accessible at the NW corner of improved lake lot at Fire No. 5856 West Twin Lake Road.

In September 1860, Alfred Millard/GLO set a wood post as original corner and noted OBTs: a 10" Bw S20°W 17 links and a Pw(?) S52°E 11 links; all now obliterated beyond recovery purposes.

In June 1968, William Cameron/RLS 112 indicates an iron pipe by standard symbol at this corner, per Plat of Survey of Interlocken Woods Subdivision filed as C-211 in Oneida County survey records, and a 30" Hemlock stump S56°W 8.3' which I found as a rotting 28" stump at S60°E 8'+/- as no evidence of it SW of the corner, obviously by bearing quadrant error, so it was necessary to confirm the location of old meander corner iron pipe by retracing the West line of Lot 56 of the Interlocken Woods Plat of Survey South 150' to an iron pipe monument found at the NE corner of Lot 55 on the West line of Lot 56.

This recovery completed September 10, 2004; there were no direct witnesses.

Plan view map of monument location with bearing and distance ties to a minimum of four(4) described witness or reference monuments of concrete, natural stone, iron, live bearing trees or equivalent material. If applicable, also show a minimum of two(2) bearing and distance ties to any other monument found and not accepted; including the bearing and distance from the accepted monument.



- WITNESS MONUMENT TIES:**
- ① New 7" Pw BT S50°E 13.90'.
 - ② New 12" Or BT S03°W 20.68'.
 - ③ New 5.5" Pw BT S38°W 16.20'.
 - ④ New 5.5" Pw BT S80°W 14.55'.
 - ⑤ Old 1.25" dia. iron pipe found with uncapped top 12" above grade 150' South (recorded as) per Plat of Survey C-211.
- I flagged monuments, BTs and T post with blaze orange tape.

SCALE: 1" = 20'

Unless otherwise indicated, all bearing tree ties are to a .25" dia. by 2.5" long PK nail with a 1.25" dia. steel washer driven into unblazed right face and a .25" dia. by 2.5" long PK nail with a 2" dia. steel washer stamped BT is also driven into unblazed face of bearing tree at DBH; the basis for measured bearings is by compass to nearest degree and all tie distances are measured horizontal by steel tape corrected to nearest 1/100th feet at standard temperature of 68° F.

RLS SEAL:



LAND SURVEYOR CERTIFICATE:

I, William C. Rohde, hereby certify that I am duly licensed as a Professional Land Surveyor in the State of Wisconsin; that this USPLS monument location was determined by me and/or under my direct supervision and control; and that this U.S. Public Land Survey Monument Location Record is true and correct to the best of my knowledge and belief.

Signed: *William C. Rohde*
 William C. Rohde RLS 841

