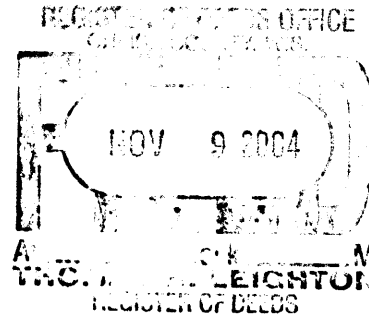


This form is intended to fulfill the requirements of Chapter A-E7.08 (3)(a) thru (i) U.S. Public Land Survey Monument Location Record, Wisconsin Administrative Code. Use the reverse side of form for continuation.

U.S. PUBLIC LAND SURVEY MONUMENT LOCATION RECORD



Recorders Data

USPLS CORNER: WEST 1/4 SECTION: 27 TOWNSHIP: 38 NORTH RANGE: 5 EAST
 NAME OF WATERWAY FOR M.C. CORNER : N/A SECTION LINE: N/A
 (CITY)(VILLAGE)(TOWN) OF: MINOCQUA COUNTY OF: ONEIDA

Description of monument found or placed and all other evidence used as the basis for monument location; including monuments and measurements required if the corner location was reestablished by lost corner proportionate methods. Also indicate name of the original surveyor, original survey date and the corner monument, bearing trees, witness or other reference monuments established, including measured bearing and distance ties, from available survey records.

Found an old undisturbed blue painted 2" dia. iron pipe 2" up at corner and 18" North of an old 3.5" square pointed top wood marker post scribed S28 on West face, S27 on East face and 1/4 on South face. Corner falls 4" East of a 2.5" Fir and about 7' North of a large 12' dia. by 7' high boulder. I carefully removed the 30" long iron pipe and drove a standard 2" dia. by 30" long aluminum monument with stamped Oneida County cap 4" up into the plumb soil cavity left by the old iron pipe; I left the old iron pipe flat on grade nearby.

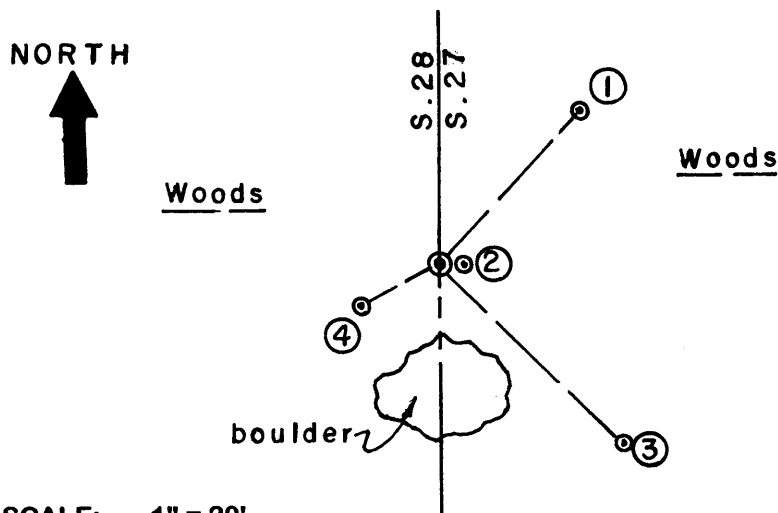
In October 1863, Alexander Anderson/GLO set a wood post as the original corner and marked OBTs: 30" Pw S62°W 6 links and a 9" Hemlock N76°E 24 links; all now obliterated beyond recovery purposes.

In July 1890, B.F. Dorr found a wood post at the GLO corner but noted no new ties.

In February 1971, John H. Fisher/RLS 836 notes a wood post at corner replaced by an iron pipe (further noted as being a 2" dia. iron pipe in Oneida County survey records), as well as a PK in large rock S01°W 7.43' which I could not find and a metal tagged 5" Mr West 12.3', now gone, per Plat of Survey filed as B-526 in Oneida County survey records.

There were no direct witnesses; however, I briefed adjoiner owner Marjorie Jozwiak at Fire No. 5885 of my recovery activity and obtained her permission to drive via an old woods road westerly from her improved parcel frontage to the corner location area.

Plan view map of monument location with bearing and distance ties to a minimum of four(4) described witness or reference monuments of concrete, natural stone, iron, live bearing trees or equivalent material. If applicable, also show a minimum of two(2) bearing and distance ties to any other monument found and not accepted; including the bearing and distance from the accepted monument.



WITNESS MONUMENT TIES:

- ① New 5.5" Fir BT N42°E 21.92' to PK/W in left face.
- ② New 8" Fir BT East 2.74'.
- ③ New 6" Mr BT S46°E 26.95'.
- ④ New 6" Fir BT S62°W 9.56'.

I set a standard white poly "T" marker post 11" North of corner monument.

I flagged monument, T Post, BTs and a line North about 300' to an old East/West woods roadway with blaze orange tape.

SCALE: 1" = 20'

Unless otherwise indicated, all bearing tree ties are to a .25" dia. by 2.5" long PK nail with a 1.25" dia. steel washer driven into unblazed right face and a .25" dia. by 2.5" long PK nail with a 2" dia. steel washer stamped BT is also driven into unblazed face of bearing tree at DBH; the basis for measured bearings is by compass to nearest degree and all tie distances are measured horizontal by steel tape corrected to nearest 1/100th feet at standard temperature of 68° F.

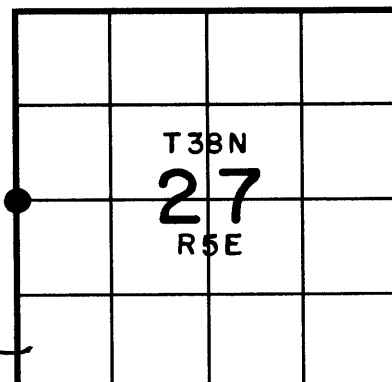
RLS SEAL:



LAND SURVEYOR CERTIFICATE:

I, William C. Rohde, hereby certify that I am duly licensed as a Professional Land Surveyor in the State of Wisconsin; that this USPLS monument location was determined by me and/or under my direct supervision and control; and that this U.S. Public Land Survey Monument Location Record is true and correct to the best of my knowledge and belief.

Signed: *William C. Rohde*
 William C. Rohde RLS 841



SECTION LOCATION MAP
 INDEX NO. 113

3805282000