

# U.S. PUBLIC LAND SURVEY MONUMENT RECORD

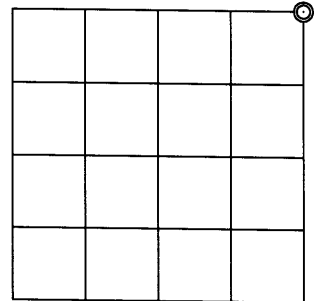
Note: This form is intended and designed to fulfill all requirements of the Wisconsin Administrative Code, Chapter A-E 7.08 U.S. Public Land Monument Record (3)(a)(b)(c)(d)(e)(f)(g)(h)(i). An additional sheet may be added if necessary to conform with said requirements.

**(a) CORNER LOCATION:**

Northeast corner of Section 2  
 Township 37 North  
 Range 5 East  
 Town of Little Rice  
 County of Oneida

**O.C. COORDINATES**

North: 199200.1421  
 East: 160487.4126  
 Control Station: O.C. 292  
 Latitude: 45°42'46.77084" N  
 Longitude: 89°50'42.63660" W  
 Datum: NAD-83 (91)  
 Method: Direct RTK GPS



**(b) HISTORY OF ORIGINAL CORNER ESTABLISHMENT**

**SECTION 2**

Original Surveyor: Alfred Millard, Deputy Surveyor  
 Date of Survey: Commenced September 12, 1860  
 Completed September 12, 1860

Original B.T.'S: Y. Pine 10" N50°W 19 links (12.54 feet)  
 W. Pine 10" N1 1/2°E, 22 links (14.52 feet)  
 Cedar 10" S11°E, 19 links (12.54 feet)  
 Spruce 10" S88°W, 32 links (21.12 feet)

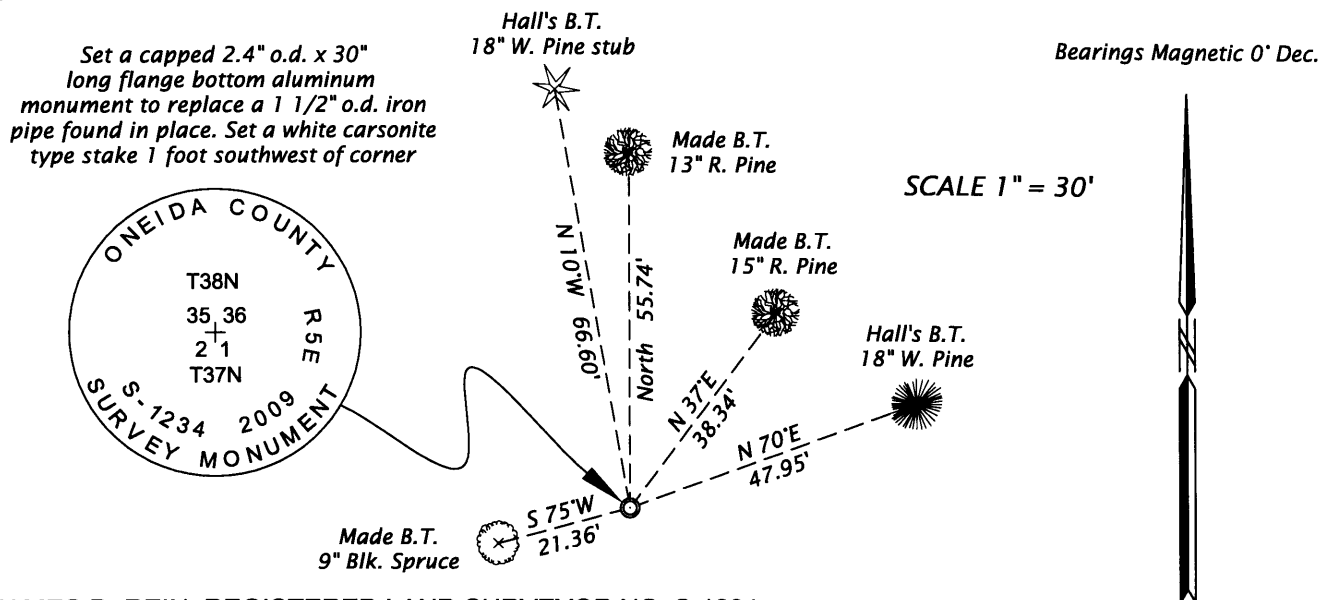
**(f)(g)(h) DESCRIPTION OF MONUMENT FOUND AT THIS CORNER AND IF IT WAS ACCEPTED, STATE ALL EVIDENCE (MATERIAL, TESTIMONIAL, OCCUPATIONAL, PLATS, RECORDS, OTHER MONUMENTS) USED AS A BASIS FOR ESTABLISHING LOCATION. IF NOT ACCEPTED OF IF NOTHING WAS FOUND, STATE EVIDENCE USED AS BASIS FOR ESTABLISHING LOCATION. IF REESTABLISHED THROUGH LOST CORNER PROPORTIONATE METHODS, INDICATE ALL MONUMENTS, DISTANCES AND DIRECTIONS USED TO ESTABLISH. INDICATE TYPE OF MONUMENT AND SIGN POST FOUND OR SET.**

February 18th, 1938 - Ray H. Hall, CC Camp 75-S Book 10, page 9 - Identify Sec. Cor. 35-36-2-1 by shell of a cedar, no marks, take record course and dist. from cedar & find low cut stp. Y. P. N50°E record dist. - Set a cedar post & mark V 0° W. Pine 8" N65°E, .717 chains (47.32 feet) W. Pine 8" N14 1/2°W, 1.01 chains (66.66 feet) - Orig.? with part of marks N54°E, record - Orig. ? N1 1/2°E, .23 5 chains (15.51 feet).

May 19, 1986 - Ownes - Illinois map drawn by W. H. Stuth, representing a 1966 survey in Section 35, T38N, R5E, legends this corner "BY OTHERS - FOUND" referenced by the following B.T.'s: 20" W, P. N65°E 47.6'; 20" W.P. N13°W 66.6'; and 7" Spr. S47°E 21.0'.

February 28, 2009 - James D. Rein, RLS No. 1234 - Recover a 1 1/2" outside diameter x 5 feet long iron pipe extending 3 feet above ground level, referenced by Hall's bearing trees, as shown below in the plan. We replace the iron pipe with a capped 2.4" outside diameter x 30" long flange bottom aluminum monument extending 6" above ground level. Also set a white carsonite type stake 1 foot southwest of the corner and made new scribed bearing trees as shown below in the plan view. Bearing tree distance measurements were made to aluminum nails set in center of root crown on the side of the tree trunk.

**(c)(d)(e) PLAN VIEW OF CORNER WITH TIES TO AT LEAST 4 WITNESS MONUMENTS. IF IN DISAGREEMENT WITH PREVIOUSLY ESTABLISHED CORNER, SHOW THE DISTANCE BETWEEN THE TWO CORNERS AND ALSO INDICATE THE TIES TO THE DISPUTED CORNER.**



(i) I, JAMES D. REIN, REGISTERED LAND SURVEYOR NO. S-1234 HEREBY CERTIFY THAT THE CORNER LOCATION ON THIS RECORD WAS DETERMINED BY ME OR UNDER MY DIRECTION AND CONTROL AND THAT THIS U.S. PUBLIC LAND SURVEY MONUMENT RECORD IS CORRECT AND COMPLETE TO THE BEST OF MY KNOWLEDGE AND BELIEF.

*[Handwritten Signature]*  
 SIGNATURE

4/02/09  
 DATE 3805 25 0000



INDEX NO. A-21