

# U.S. PUBLIC LAND SURVEY MONUMENT RECORD

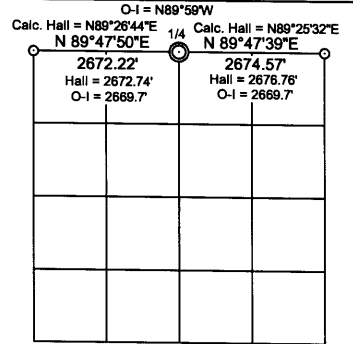
Note: This form is intended and designed to fulfill all requirements of the Wisconsin Administrative Code, Chapter A-E 7.08 U.S. Public Land Monument Record (3)(a)(b)(c)(d)(e)(f)(g)(h)(i). An additional sheet may be added if necessary to conform with said requirements.

**(a) CORNER LOCATION:**

North 1/4 corner of Section 2  
 Township 37 North  
 Range 5 East  
 Town of Little Rice  
 County of Oneida

**C.O. COORDINATES**

North: 199190.5329  
 East: 157812.8561  
 Control Station: O.C. 292  
 Latitude: 45°42'46.77084" N  
 Longitude: 89°50'42.63660" W  
 Datum: NAD - 83 (91)  
 Method: Direct RTK GPS



**(b) HISTORY OF ORIGINAL CORNER ESTABLISHMENT**

Original Surveyor: Alfred Millard, Deputy Surveyor  
 Date of Survey: Commenced September 12, 1860  
 Completed September 12, 1860

Original B.T.'S: Spruce 4" N29°E, 5 links (3.30 feet)  
 Tamarac 6" S48°E, 27 links (17.82 feet)

**SECTION 2**

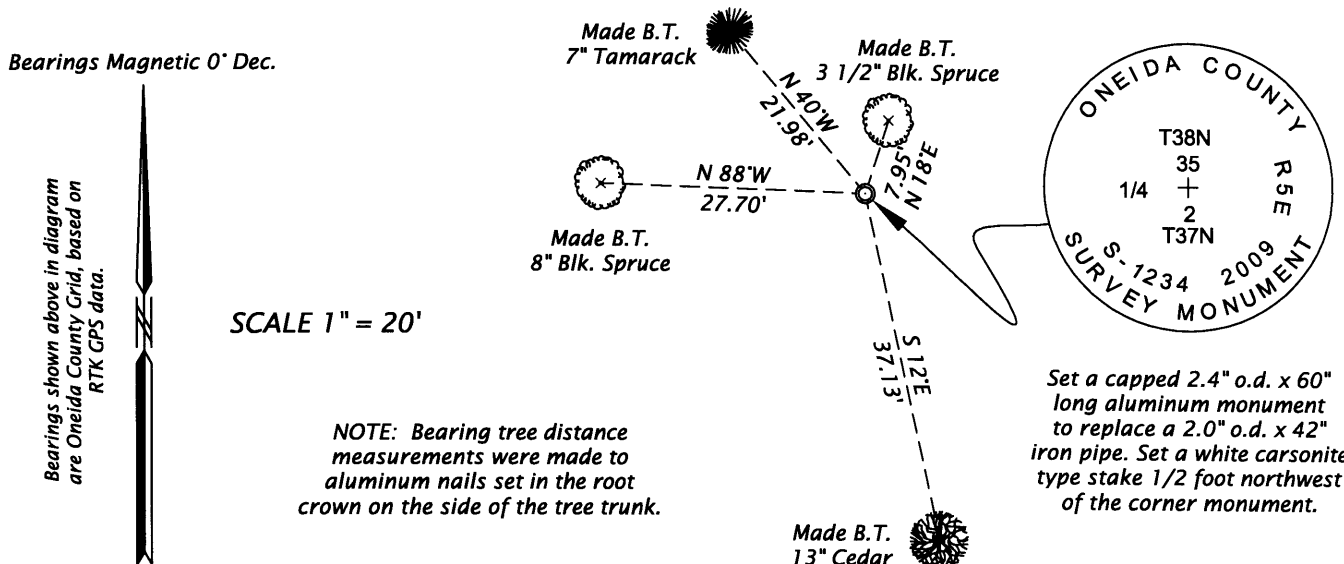
**(f)(g)(h) DESCRIPTION OF MONUMENT FOUND AT THIS CORNER AND IF IT WAS ACCEPTED, STATE ALL EVIDENCE (MATERIAL, TESTIMONIAL, OCCUPATIONAL, PLATS, RECORDS, OTHER MONUMENTS) USED AS A BASIS FOR ESTABLISHING LOCATION. IF NOT ACCEPTED OF IF NOTHING WAS FOUND, STATE EVIDENCE USED AS BASIS FOR ESTABLISHING LOCATION. IF REESTABLISHED THROUGH LOST CORNER PROPORTIONATE METHODS, INDICATE ALL MONUMENTS, DISTANCES AND DIRECTIONS USED TO ESTABLISH. INDICATE TYPE OF MONUMENT AND SIGN POST FOUND OR SET.**

February 16, 1938 - Ray H. Hall, CC Camp 75-S Book 10, page 7 - Expose BT at base of Tamarac stub which we believe to be Orig. SE brng. Dug up swamp in 27 link arc NW but fail to find sign of a post or of the spruce. Set a 6" x 6" x 7' Cedar Post N50°W (PC) 27 lks from Orig. B.T. & mark - 2°27' used {Cedar 6" S25 1/2°E, .515 chains (33.99 feet) and Spruce 5" N10 1/4°E, .178 chains (11.75 feet) Orig. stp. S46°E, .27 chains (17.82 feet).

May 19, 1986 - Owens - Illinois map drawn by W. H. Stuth, representing a 1966 survey in Section 35, T38N, R5E, legends this corner "BY OTHERS - FOUND", with their measurements to section corners shown above in diagram.

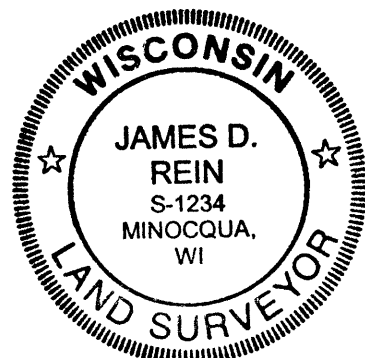
February 28, 2009 - James D. Rein, RLS No. 1234 - Recover a 2.0" o.d. x 42" long iron pipe extending 2 feet above ground level. An old 3" square wood post stands near pipe and another large old rotted 7" square wood post is down at base of iron pipe. There is also evidence of an old wind thrown tree where Hall's Spruce should be located. Because this corner position is harmonious with Hall's record (shown above in the diagram), I replace the iron pipe with a capped 2.4" o.d. x 60" long aluminum monument 42 inches in the ground. We set a white carsonite type stake 1/2 foot northwest of the corner monument and make new scribed bearing trees as shown below in the plan view.

**(c)(d)(e) PLAN VIEW OF CORNER WITH TIES TO AT LEAST 4 WITNESS MONUMENTS. IF IN DISAGREEMENT WITH PREVIOUSLY ESTABLISHED CORNER, SHOW THE DISTANCE BETWEEN THE TWO CORNERS AND ALSO INDICATE THE TIES TO THE DISPUTED CORNER.**



(i) I, JAMES D. REIN, REGISTERED LAND SURVEYOR NO. S-1234 HEREBY CERTIFY THAT THE CORNER LOCATION ON THIS RECORD WAS DETERMINED BY ME OR UNDER MY DIRECTION AND CONTROL AND THAT THIS U.S. PUBLIC LAND SURVEY MONUMENT RECORD IS CORRECT AND COMPLETE TO THE BEST OF MY KNOWLEDGE AND BELIEF.

*James D. Rein*  
 SIGNATURE  
 DATE 4/02/09 3805350020



INDEX NO. A-19