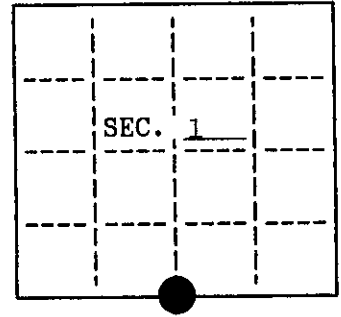


**U. S. PUBLIC LAND SURVEY MONUMENT RECORD**

Note: This form is intended and designed to fulfill all requirements of Wisconsin Administrative Code, Chapter A-E 7.08 U.S. Public Land Survey Monument Record (3)(a)(b)(c)(d)(e)(f)(g)(h)(i). An additional sheet may be added if necessary to conform with said requirements.

(a) CORNER LOCATION: State Plane Coordinates  
S<sup>1</sup>/<sub>4</sub> corner of Sec. 1 X \_\_\_\_\_  
 Township 38 North Y \_\_\_\_\_  
 Range 6 East Datum Base \_\_\_\_\_  
 Town/~~City~~ Hazelhurst County of Oneida



(b) HISTORY OF ORIGINAL CORNER ESTABLISHMENT Original B.T.'S  
 Original Surveyor: Alexander Anderson

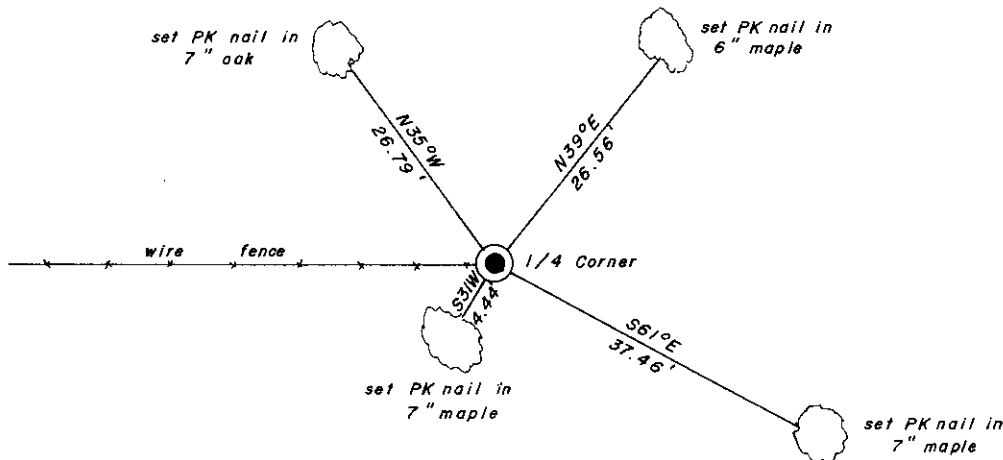
Date of Survey: Commenced September, 1863 10" Aspen N23<sup>1</sup>/<sub>2</sub>°E, 8 Lks.  
 Completed October, 1863 12" Aspen S76°W, 15 Lks.

(b)(f)(g)(h) Description of monument found at this corner and if it was accepted, state all evidence (material, testimonial, occupational, plats, records, other monuments) used as basis for accepting. If not accepted or if nothing was found, state evidence used as basis for establishing location. If reestablished through lost corner proportionate methods, indicate all monuments, distances and directions used to establish. Indicate type of monument and sign post found or set.

August, 1905: Vaughan found Dorr's post and stumps of original trees. W. Birch 10, N41°W, 28 Lks.

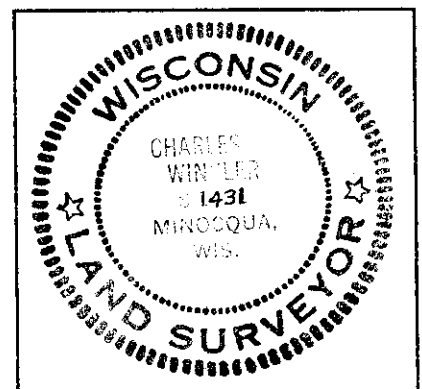
July 23, 1992: I found and accepted a 2" iron pipe witnessed by Vaughan's W. Birch STP. N44°W, 18.8'. I replaced pipe with a 30" long Oneida County Aluminum Monument. I established witnesses as shown below and set a plastic sign post Northwest, 1 foot.

(c)(d)(e) Plan view of corner with ties to at least 4 witness monuments. If in disagreement with previously established corner, show the distances between the two corners and also indicate the ties to the disputed.



(i) I, Charles E. Winkler, Reg. Land Surveyor hereby certify that the corner location on this record was determined by me or under my direction and control and that this U.S. Public Land Survey Monument Record is correct and complete to the best of my knowledge and belief.

Charles E. Winkler 4/5/93  
 Signature Inman-Foltz & Associates, Inc. Date



INDEX NO. E-23

3806010020