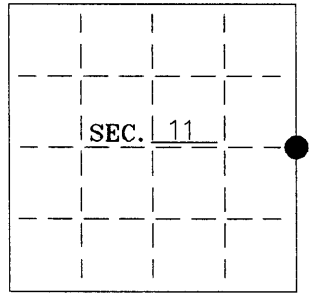


U. S. PUBLIC LAND SURVEY MONUMENT RECORD

Note: This form is intended and designed to fulfill all requirements of Wisconsin Administrative Code-Chapter A-E 7.08 U. S. Public Land Survey Monument Record (3)(a)(b)(c)(d)(e)(f)(g)(h)(i). An additional sheet may be added if necessary to conform with said requirements.

(a) CORNER LOCATION: State Plane Coordinates
E 1/4 corner of Sec. 11 X ---
 Township 38 North Y ---
 Range 6 East Datum Base ---
 Town Hazelhurst County of Oneida



(b) HISTORY OF ORIGINAL CORNER ESTABLISHMENT:
 Original Surveyor: Alex Anderson
 Date of Survey: Commenced 1863
 Completed 1863

Original B.T.'S

Birch 7 S13 1/2°E 8lks

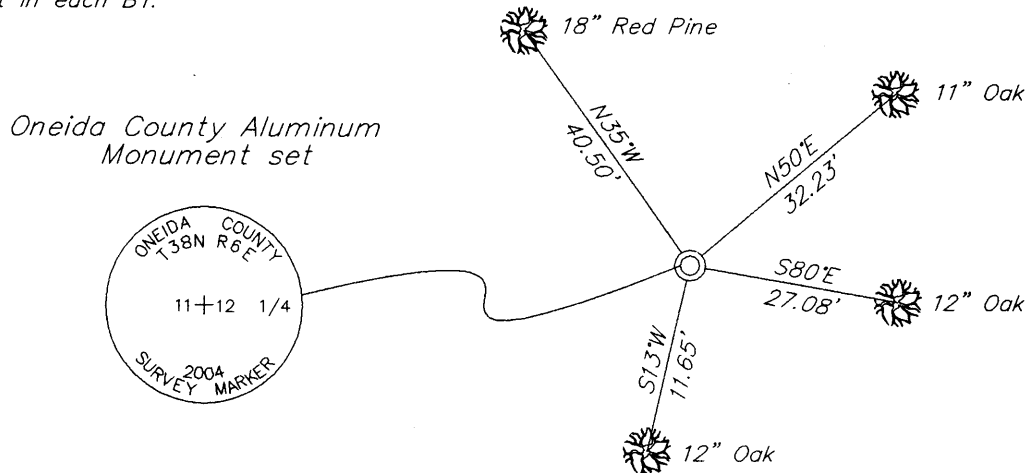
W. Pine 8 N51°W 16lks

(b)(f)(g)(h) Description of monument found at this corner and if it was accepted—state all evidence (material—testimonial—occupation—plats—records—other monuments) used as a basis for accepting. If not accepted or if nothing was found state evidence used as basis for establishing location. If reestablished through lost corner proportionate methods indicate all monuments—distances and directions used to establish. Indicate type of monument and sign post found or set.

- 1947 – On a map by Walter Hennig, he shows an iron pipe and 8" N. Pine N38°W, 40.3' at the East 1/4 corner location.
- 1978 – On a map by John Fisher, he shows an iron pipe, a scribed post, and Hennig's BT.
- 1982 – Inman, Foltz and Associates field notes show a 1" iron pipe with a wood post. The notes show they found Hennig's N. Pine BT's and made a new BT: 10" Oak S86°E, 26.9'.
- 1999 – On a map by David McMullen, he shows a 1" iron pipe found in place as the West 1/4 corner of Section 12.
- 2004 – I found and accepted a 1-1/4" iron pipe inside a 2" iron pipe with a white guard post S30°W, ±0.5' from the corner. I found an existing BT: 18" Red Pine N35°W, 40.50'. I replaced the pipe with an Oneida County Aluminum Monument and made three new BT's as shown below.

(c)(d)(e) Plan view of corner with ties to at least 4 witness monuments. If in disagreement with previously established corner—show the distances between the two corners and also indicate the ties to the disputed.

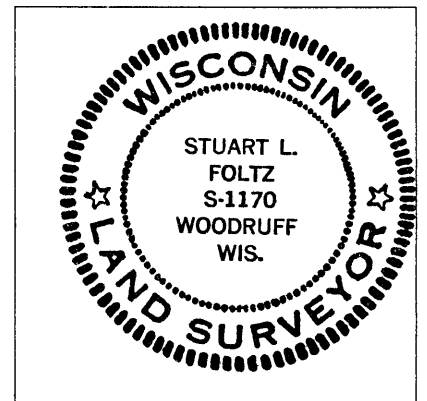
—PK nails set in each BT.



(i) I Stuart L. Foltz S-1170 hereby certify that the corner location on this record was determined by me or under my direction and control and that this U.S. Public Land Survey Monument Record is correct and complete to the best of my knowledge and belief.

Stuart L. Foltz
 Signature

1/6/2005
 Date



INDEX NO. G 21

3806 112000