

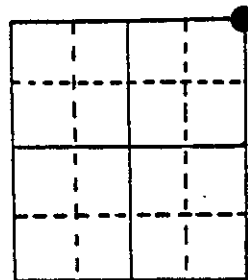
# U.S. PUBLIC LAND SURVEY MONUMENT RECORD

Note: This form is intended and designed to fulfill all requirements of Wisconsin Administrative Code, Chapter A-E 5.02, U.S. Public Land Survey Monument Record (3) (a) (b) (c) (d) (e) (f) (g) (h) (i). An additional sheet may be added if necessary to conform with said requirements.

(a) Corner location: Township 38 North  
 Range 6 East/West

Town/City/Village Hazelhurst

County Oneida



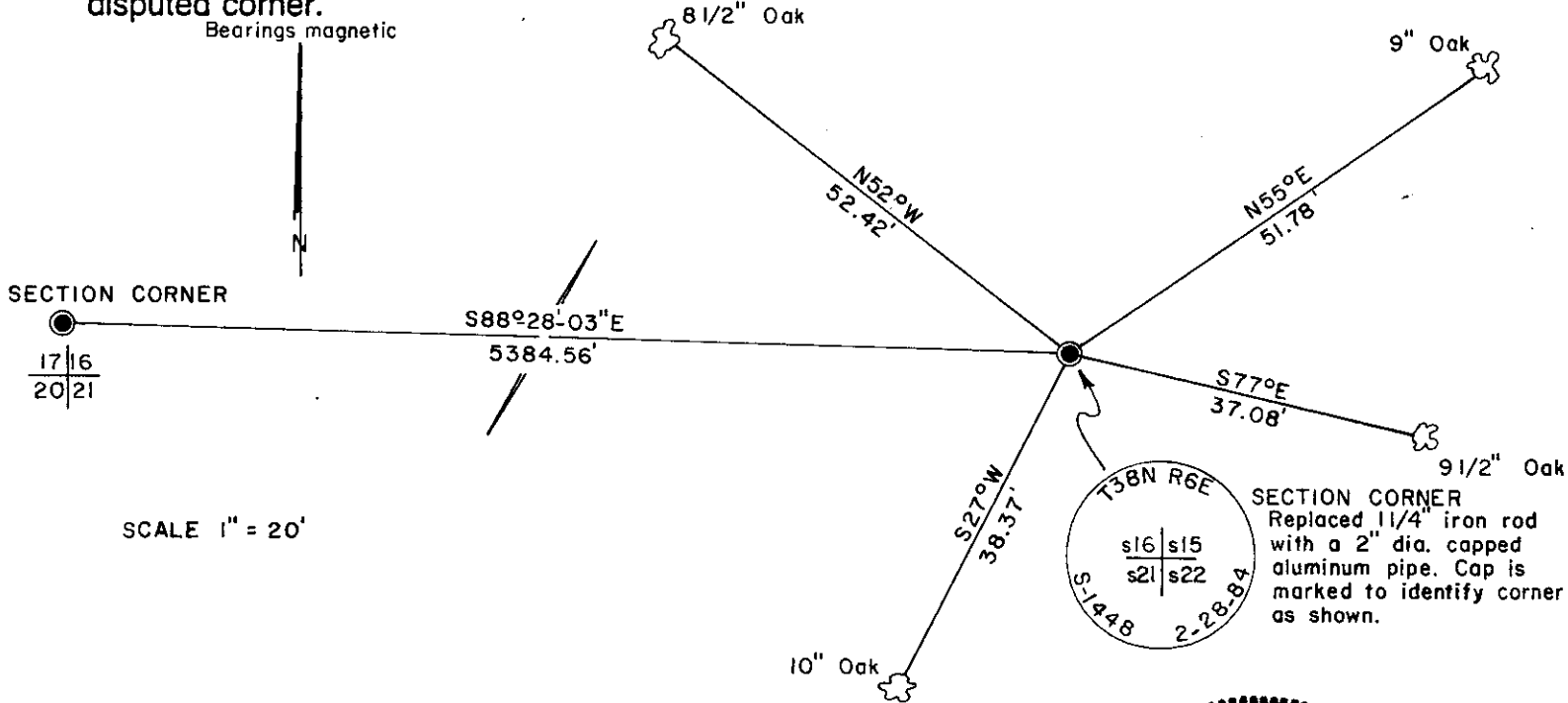
Section 21

(b) (f) (g) (h) Description of monument found at this corner and if it was accepted, state all evidence (material, testimonial, occupational, plats, records, other monuments) used as a basis for accepting. If not accepted or if nothing was found, state evidence used as basis for establishing location. If reestablished through lost corner proportionate methods, indicate all monuments, distances and directions used to establish.

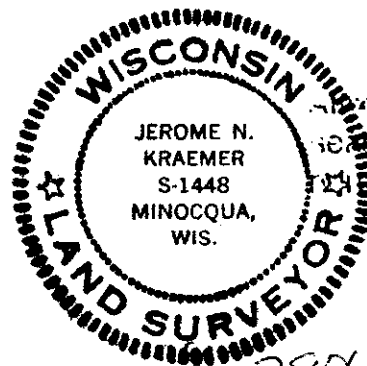
Sept. 1863 - Alexander Anderson, Gov't Deputy Surveyor - set post corner to sections 15, 16, 21 and 22. Original bearing trees: Sugar 8" N6°E, 39 lks; Sugar 10" N14°W, 34 lks.

Feb 28, 1984 - Jerome N. Kraemer, R.L.S. - Found 1 1/4" iron rod, flush with ground level at old fence corner. Old fence runs northerly and easterly. Bearing trees found: 11" Oak N39°W, 24.9 feet; 11" double Oak stump N23°E, 34.5 feet; 10" Oak S25°W, 9.3 feet. Replaced 1 1/4" iron rod with a 2" dia. and 30" long capped aluminum pipe stamped to identify corner. Set capped pipe 2" below ground level as location falls at south side of woods road used as a snow-mobile trail. Blazed, scribed and set aluminum nail in side of new bearing trees as shown in plan view below.

(c) (d) (e) Plan view of corner with ties to at least 4 witness monuments. If in disagreement with previously established corner, show the distances between the two corners and also indicate the ties to the disputed corner.



(i) I, Jerome N. Kraemer, Registered Land Surveyor, No. S-1448  
 (type or print name) certify that the corner location on this record was determined by me or under my direction and control and that this U.S. Public Land Survey Monument Record is correct and complete to the best of my knowledge and belief.



Index No. N-13

Jerome N. Kraemer  
 Signature

February 28, 1984  
 Date

380616000

# U.S. PUBLIC LAND SURVEY MONUMENT RECORD

REGISTER OF DEEDS OFFICE  
ONEIDA COUNTY  
FILED

APR 17 2017

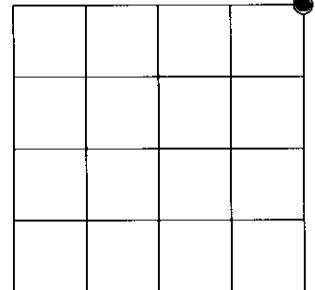
Note: This form is intended and designed to fulfill all requirements of the Wisconsin Administrative Code, Chapter A-E 7.08 U.S. Public Land Monument Record (3)(a)(b)(c)(d)(e)(f)(g)(h)(i). An additional sheet may be added if necessary to conform with said requirements.

(a) CORNER LOCATION: WISCRS -  
 Northeast Corner of Section 21 North: 214970.409 USft  
 Township 38 North East: 181293.771 USft  
 Range 6 East Datum: NAD 83(2011)  
 Town of Hazelhurst GNSS Method: RTK - Direct  
 County of Oneida GNSS Control: WISCORS VRS

AT \_\_\_\_\_ O'CLOCK \_\_\_\_\_ M  
 KYLE J. FRANSON  
 REGISTER OF DEEDS

( RECORDING AREA )

SECTION 21



(b) HISTORY OF ORIGINAL CORNER ESTABLISHMENT

Original Surveyor:  
 Date of Survey: Commenced \_\_\_\_\_  
 Completed \_\_\_\_\_  
 Original B.T.'S \_\_\_\_\_

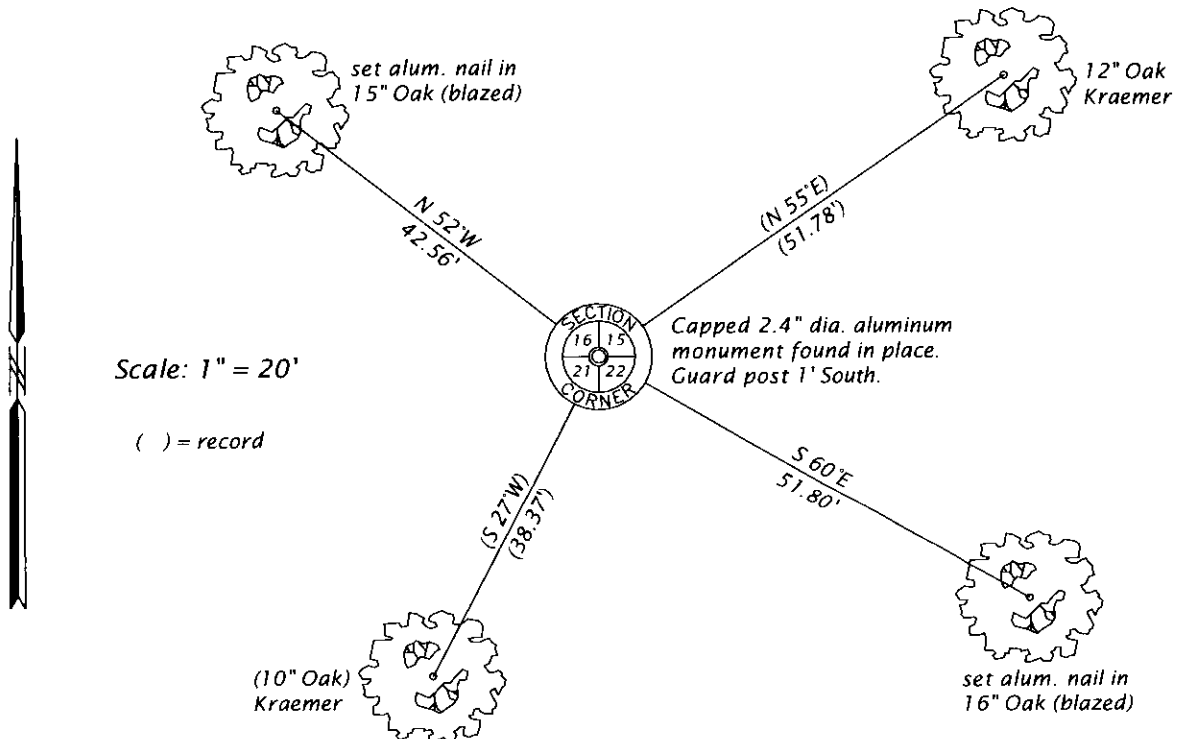
**SEE PREVIOUS USPLS MONUMENT  
 RECORD DATED DEC. 28, 1983**

(f)(g)(h) DESCRIPTION OF MONUMENT FOUND AT THIS CORNER AND IF IT WAS ACCEPTED, STATE ALL EVIDENCE (MATERIAL, TESTIMONIAL, OCCUPATIONAL, PLATS, RECORD, OTHER MONUMENTS) USED AS A BASIS FOR ESTABLISHING LOCATION. IF NOT ACCEPTED OR IF NOTHING WAS FOUND, STATE EVIDENCE USED AS BASIS FOR ESTABLISHING LOCATION. IF REESTABLISHED THROUGH LOST CORNER PROPORTIONATE METHODS, INDICATE ALL MONUMENTS, DISTANCES AND DIRECTIONS USED TO ESTABLISH. INDICATE TYPE OF MONUMENT AND SIGN POST FOUND OR SET.

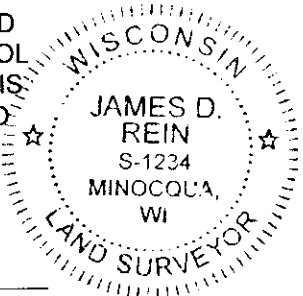
This is a perpetuation of a previous USPLS Monument Record by Jerome N. Kraemer, RLS, dated December 28, 1983, and filed in the office of the Oneida County Register of Deeds. A complete history of the corner can be found on the previous monument record. I accept the previous location as a true and faithful perpetuation or reestablishment of the original corner location and further perpetuate it as follows.

April 4, 2017, I found and accepted the capped aluminum monument set by Kraemer. His NW & SE Oaks are gone. See below for reference ties.

(c)(d)(e) PLAN VIEW OF CORNER WITH TIES TO AT LEAST 4 WITNESS MONUMENTS. IF IN DISAGREEMENT WITH PREVIOUSLY ESTABLISHED CORNER, SHOW THE DISTANCE BETWEEN THE TWO CORNERS AND ALSO INDICATE THE TIES TO THE DISPUTED CORNER.



(i) I, JAMES D. REIN, PROFESSIONAL LAND SURVEYOR NO. S-1234 HEREBY CERTIFY THAT THE CORNER LOCATION ON THIS RECORD WAS DETERMINED BY ME OR UNDER MY DIRECTION AND CONTROL AND THAT THIS U.S. PUBLIC LAND SURVEY MONUMENT RECORD IS CORRECT AND COMPLETE TO THE BEST OF MY KNOWLEDGE AND BELIEF.



*[Handwritten Signature]*  
 SIGNATURE

4-13-17  
 DATE

INDEX NO. N-13  
 3806160000