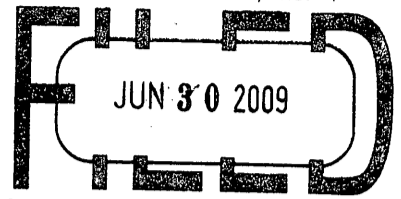


U.S. PUBLIC LAND SURVEY MONUMENT RECORD

Note: This form is intended and designed to fulfill all requirements of the Wisconsin Administrative Code, Chapter A-E 7.08 U.S. Public Land Monument Record (3)(a)(b)(c)(d)(e)(f)(g)(h)(i). An additional sheet may be added if necessary to conform with said requirements.

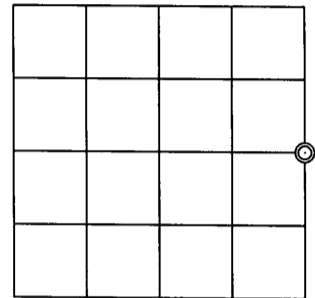


At \_\_\_\_\_ O'Clock \_\_\_\_\_ M  
**THOMAS H. LEIGHTON**  
REGISTER OF DEEDS

(a) CORNER LOCATION: **COORDINATES**  
East 1/4 corner of Section 19  
Township 38 North  
Range 6 East  
Town of Hazelhurst  
County of Oneida  
North:  
East:  
Control Station:  
Latitude:  
Longitude:  
Datum:  
Method:

(RECORDING AREA)

SECTION 19



(b) HISTORY OF ORIGINAL CORNER ESTABLISHMENT

Original Surveyor: Alexander Anderson  
Date of Survey: Commenced September 28th, 1863  
Completed October 5th, 1863  
Original B.T.'s: Aspen 10" S31°W, 16 links (10.56 feet)  
Birch 8" N71°E, 7 links (4.62 feet)

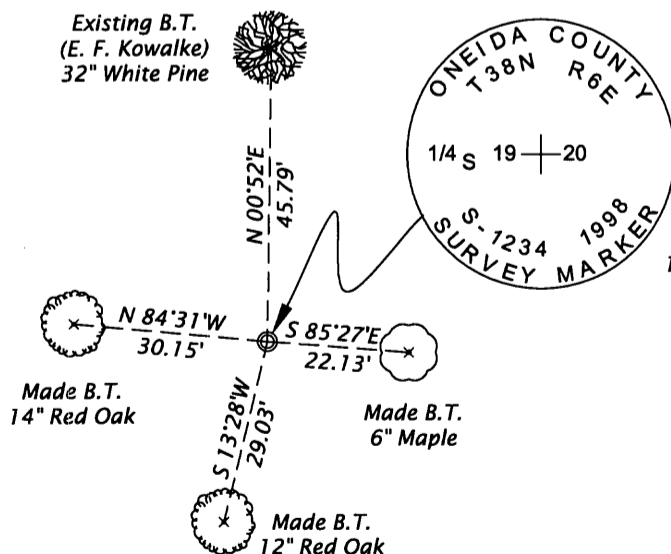
(f)(g)(h) DESCRIPTION OF MONUMENT FOUND AT THIS CORNER AND IF IT WAS ACCEPTED, STATE ALL EVIDENCE (MATERIAL, TESTIMONIAL, OCCUPATIONAL, PLATS, RECORDS, OTHER MONUMENTS) USED AS A BASIS FOR ESTABLISHING LOCATION. IF NOT ACCEPTED OF IF NOTHING WAS FOUND, STATE EVIDENCE USED AS BASIS FOR ESTABLISHING LOCATION. IF REESTABLISHED THROUGH LOST CORNER PROPORTIONATE METHODS, INDICATE ALL MONUMENTS, DISTANCES AND DIRECTIONS USED TO ESTABLISH. INDICATE TYPE OF MONUMENT AND SIGN POST FOUND OR SET.

June 6, 1922 - D. H. Vaughan, Oneida County Surveyor - Old Field Book 9, page 76 - Survey in Section 19, Set E 1/4 P. at 39.94 ch. and 27 1/2 links E. of random. Made B.T.'s - Maple 12" N 10 1/2°E. 4 1/2 links (2.97 feet) and Maple 12" S 89 1/2°W, 67 1/2 links (44.55 feet).

Oct. 13 - 30, 1947 - E. F. Kowalke, Surveyor - Field Book 6, page 3 - Recovered squared corner fence post and old Maple stump in fence line West, 43.7 feet. Set iron pipe and made new bearing tree, W. Pine 26" N 1°W, 45.2 feet.

June 2nd, 1998 - James D. Rein, R.L.S. No. 1234 - Survey crew recovered 1.3" o.d. iron pipe extending 12" above ground at an intersection of old down fences to the north and west. Old rotted 4" square post found lying at base of iron pipe, which is referenced by Kowalke's W. Pine bearing tree, now 32" diameter. We replaced the iron pipe with an Oneida County capped aluminum monument and made new bearing trees as shown below in the plan view.

(c)(d)(e) PLAN VIEW OF CORNER WITH TIES TO AT LEAST 4 WITNESS MONUMENTS. IF IN DISAGREEMENT WITH PREVIOUSLY ESTABLISHED CORNER, SHOW THE DISTANCE BETWEEN THE TWO CORNERS AND ALSO INDICATE THE TIES TO THE DISPUTED CORNER.



Set a capped 2.4" o.d. x 30" long flange bottom aluminum monument extending 4" above ground to replace a found 1.3" o.d. iron pipe at an intersection of old down wire fences running to the north and west. Also set a white plastic stake Northeasterly 1/2 feet. Bearing tree distance measurements were made to aluminum nails set in the root crown on the side of the tree trunk.

Bearings Grid North,  
Wisconsin Coordinate System  
North Zone, based on  
solar observations



SCALE 1" = 30'

(i) I, JAMES D. REIN, REGISTERED LAND SURVEYOR NO. S-1234 HEREBY CERTIFY THAT THE CORNER LOCATION ON THIS RECORD WAS DETERMINED BY ME OR UNDER MY DIRECTION AND CONTROL AND THAT THIS U.S. PUBLIC LAND SURVEY MONUMENT RECORD IS CORRECT AND COMPLETE TO THE BEST OF MY KNOWLEDGE AND BELIEF.

*[Signature]*  
SIGNATURE  
June 26, 2009  
DATE



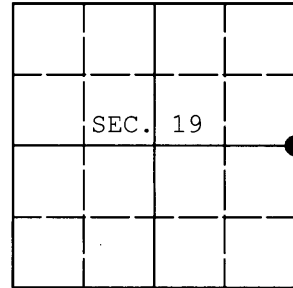
3806192000A

INDEX NO. P 5

**U.S. PUBLIC LAND SURVEY MONUMENT RECORD**

Note: This form is intended and designed to fulfill all requirements of Wisconsin Administrative Code, Chapter A-E 7.08 U.S. Public Land Survey Monument Record (3) (a) (b) (c) (d) (e) (f) (g) (h) (i). An additional sheet may be added if necessary to conform with said requirements.

(a) CORNER LOCATION: WISCRS (Oneida County)  
1/4 Cor. of Secs. 19 & 20 N: 212,364.28 USft  
Township 38 North E: 170,666.42 USft  
Range 6 East of the 4th P.M. Datum: NAD 1983(2011)  
Town of Hazelhurst County of Oneida



(b) HISTORY OF ORIGINAL CORNER ESTABLISHMENT

Original Surveyor: Original Accessories:  
Date of Survey: Commenced:  
Completed:

(b) (f) (g) (h) Description of monument found at this corner and if it was accepted, state all evidence (material, testimonial, occupational, plats, records, other monuments) used as a basis for accepting. If not accepted or if nothing was found, state evidence used as basis for establishing location. If re-established through lost corner proportionate methods, indicate all monuments, distances and directions used to establish. Indicate type of monument and sign post found or set.

NOTE: This is a perpetuation of a previous USPLS Monument Record by James D. Rein, RLS dated June 26, 2009 and filed in the office of the Oneida County Register of Deeds. A complete history of the corner can be found on the previous monument record. I accept the previous location as a true and faithful perpetuation or reestablishment of the original corner location and further perpetuate it as follows.

July 30, 2014: I found and accepted Rein's monument, a 2-1/2" diam. aluminum pipe with 3-1/4" diam. Oneida Co. aluminum cap flush with the ground. Rein's accessories were found in substantial agreement with his previous record and were not remeasured as the sole purpose of this work is to report the coordinates of the corner point.

The coordinates shown were derived from a static GPS observation referenced to the WISCRS network.

(c) (d) (e) Plan view of corner with ties to at least 4 witness monuments. If in disagreement with previously established corner, show the distances between the two corners and also indicate the ties to the disputed.

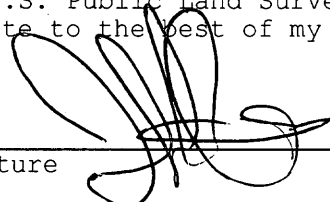
REGISTER OF DEEDS OFFICE  
ONEIDA COUNTY  
FILED

OCT 13 2014

AT \_\_\_\_\_ O'CLOCK \_\_\_\_\_ M  
KYLE J. FRANSON  
REGISTER OF DEEDS

(i) I, Jeffrey W. Austin, Registered Land Surveyor No. S-1885, hereby certify that the corner location on this record was determined by me or under my direction and control and that this U.S. Public Land Survey Monument Record is correct and complete to the best of my knowledge and belief.



  
Signature \_\_\_\_\_ Date SEP. 7, 2014