

U.S. PUBLIC LAND SURVEY MONUMENT RECORD

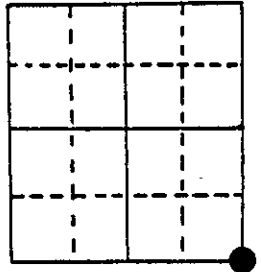
Note: This form is intended and designed to fulfill all requirements of Wisconsin Administrative Code, Chapter A-E 5.02, U.S. Public Land Survey Monument Record (3) (a) (b) (c) (d) (e) (f) (g) (h) (i). An additional sheet may be added if necessary to conform with said requirements.

(a) Corner location: Township 38 North

Range 6 East/West

Town/City/Village Hazelhurst

County Oneida



Section 21

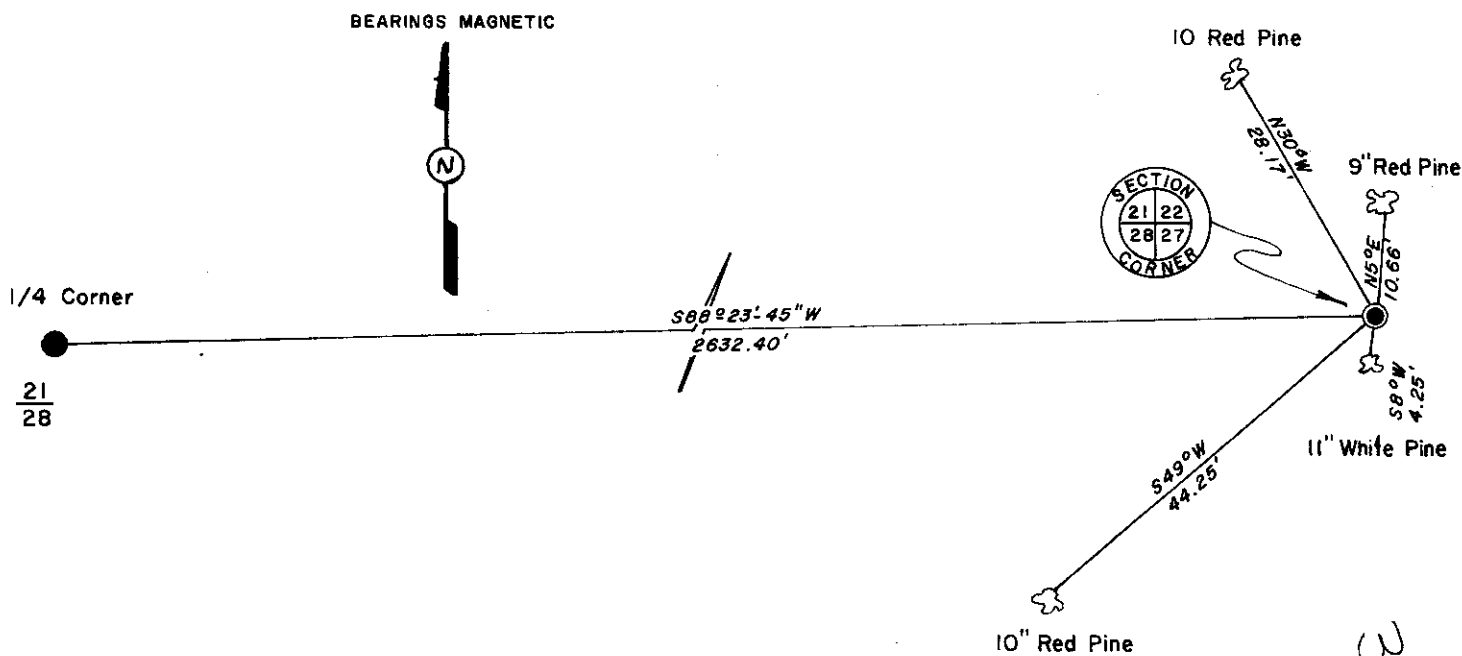
(b) (f) (g) (h) Description of monument found at this corner and if it was accepted, state all evidence (material, testimonial, occupational, plats, records, other monuments) used as a basis for accepting. If not accepted or if nothing was found, state evidence used as basis for establishing location. If reestablished through lost corner proportionate methods, indicate all monuments, distances and directions used to establish.

Sept. 1863 - Alexander Anderson, Gov't. Deputy Surveyor, set post corner to sections 21, 22, 27 and 28. Original bearing trees: Maple 7" N43°E, 5 links; W. Pine 36" N70°W, 34 links.

Feb. 1984 - Jerome N. Kraemer, Registered Land Surveyor, found 1" dia. aluminum conduit, protruding up 8" above ground level. Found scribed cedar post by conduit. Existing bearing trees found: 9" R. Pine N5°E, 10.66'; 11" W. Pine S8°W, 4.25 feet.

March 16, 1984 - Jerome N. Kraemer - Replaced found 1" dia. conduit with an Oneida County 2" dia. and 30" long capped aluminum monument protruding 5" up above ground level with cap stamped to identify corner. Blazed and scribed two new bearing trees, set aluminum nail in side of trees and measured existing bearing trees as shown in plan view below.

(c) (d) (e) Plan view of corner with ties to at least 4 witness monuments. If in disagreement with previously established corner, show the distances between the two corners and also indicate the ties to the disputed corner.



(i) I, Jerome N. Kraemer, Registered Land Surveyor No. S-1448 (type or print name) certify that the corner location on this record was determined by me or under my direction and control and that this U.S. Public Land Survey Monument Record is correct and complete to the best of my knowledge and belief.

Jerome N. Kraemer
Signature

April 2, 1984
Date



Index No. R-13
3806210000