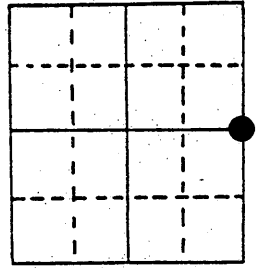


# U.S. PUBLIC LAND SURVEY MONUMENT RECORD

Note: This form is intended and designed to fulfill all requirements of Wisconsin Administrative Code, Chapter A-E 5.02, U.S. Public Land Survey Monument Record (3) (a) (b) (c) (d) (e) (f) (g) (h) (i). An additional sheet may be added if necessary to conform with said requirements.

(a) Corner location: Township 38 North  
 Range 6 East/West  
 Town/City/Village Hazelhurst  
 County Oneida



Section 21

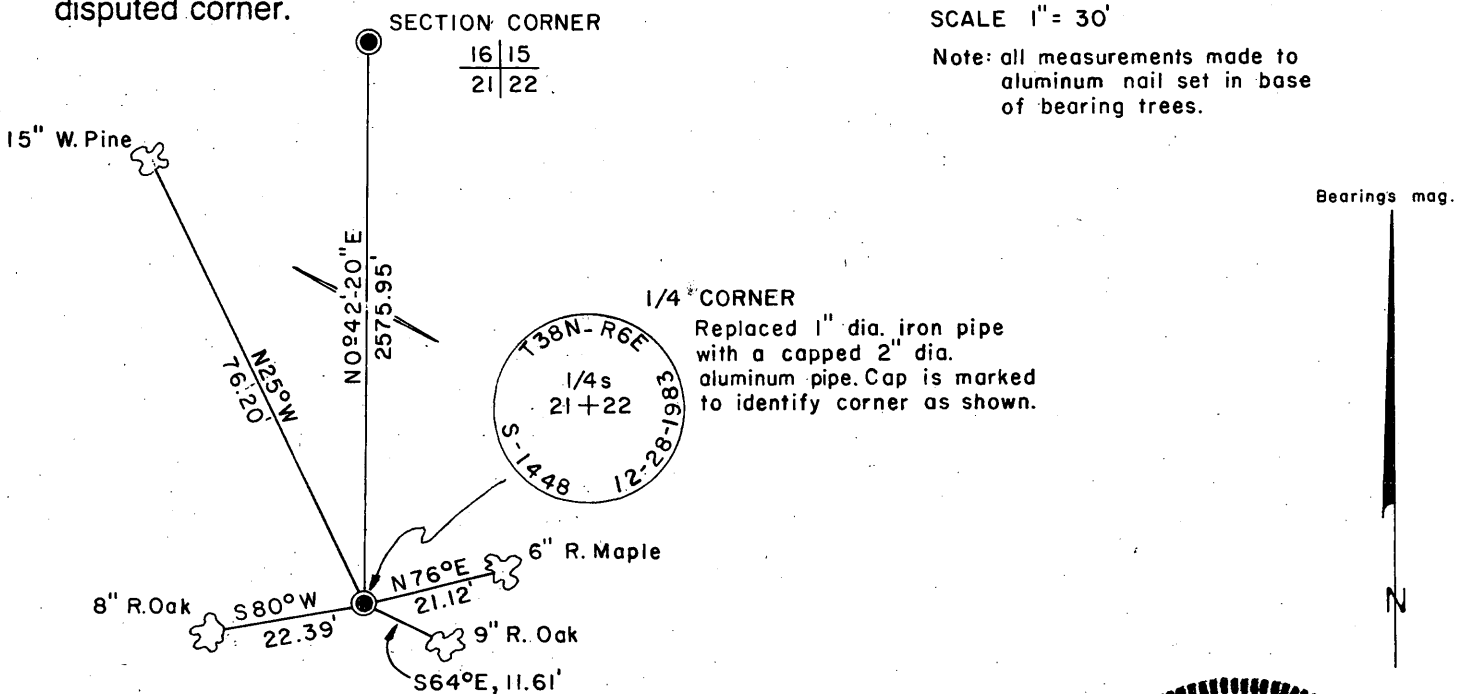
(b) (f) (g) (h) Description of monument found at this corner and if it was accepted, state all evidence (material, testimonial, occupational, plats, records, other monuments) used as a basis for accepting. If not accepted or if nothing was found, state evidence used as basis for establishing location. If reestablished through lost corner proportionate methods, indicate all monuments, distances and directions used to establish.

Sept. 1863 - Alexander Anderson, Gov't. Deputy Surveyor - set quarter section post. Original bearing trees: W. Pine 14" S68°W, 35 lks; W. Pine 14" S57°E, 8 lks.

Nov. 8, 1983 - Jerome N. Kraemer, R.L.S. found 1" dia. iron pipe protruding up 30" above ground level. Found 9" Oak with upper and lower face blaze S64°E, 11.61 feet.

Dec. 28, 1983 - Jerome N. Kraemer, R.L.S. set 2" dia. and 30" long aluminum pipe with a cast aluminum cap stamped to identify corner. Pipe protrudes up 2" above ground level. Established bearing trees as shown in plan view below.

(c) (d) (e) Plan view of corner with ties to at least 4 witness monuments. If in disagreement with previously established corner, show the distances between the two corners and also indicate the ties to the disputed corner.



(i) I, Jerome N. Kraemer, Registered Land Surveyor No. S-1448  
 (type or print name) certify that the corner location on this record was determined by me or under my direction and control and that this U.S. Public Land Survey Monument Record is correct and complete to the best of my knowledge and belief.

Jerome N. Kraemer Signature December 28, 1983  
 Date



Index No. P-13

3806212000

Stock No. 26273

REGISTER OF DEEDS OFFICE  
ONEIDA COUNTY, WIS.  
JUN 1 1 1986  
A.....M  
DORIS VERABE KUEHN  
REGISTER OF DEEDS

# U.S. PUBLIC LAND SURVEY MONUMENT RECORD

REGISTER OF DEEDS OFFICE  
ONEIDA COUNTY  
FILED

APR 17 2017

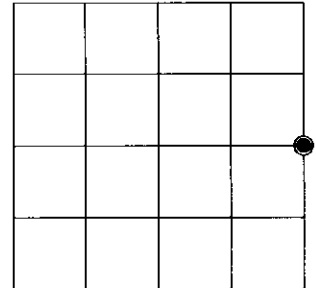
Note: This form is intended and designed to fulfill all requirements of the Wisconsin Administrative Code, Chapter A-E 7.08 U.S. Public Land Monument Record (3)(a)(b)(c)(d)(e)(f)(g)(h)(i). An additional sheet may be added if necessary to conform with said requirements.

AT \_\_\_\_\_ O'CLOCK \_\_\_\_\_ M  
KYLE J. FRANSON  
REGISTER OF DEEDS

(a) CORNER LOCATION: WISCRS -  
East Quarter Corner of Section 21 North: 212394.457 USft  
Township 38 North East: 181297.238 USft  
Range 6 East Datum: NAD 83(2011)  
Town of Hazelhurst GNSS Method: RTK - Direct  
County of Oneida GNSS Control: WISCORS VRS

(RECORDING AREA)

SECTION 21



(b) HISTORY OF ORIGINAL CORNER ESTABLISHMENT

Original Surveyor:  
Date of Survey: Commenced  
Completed  
Original B.T.'S

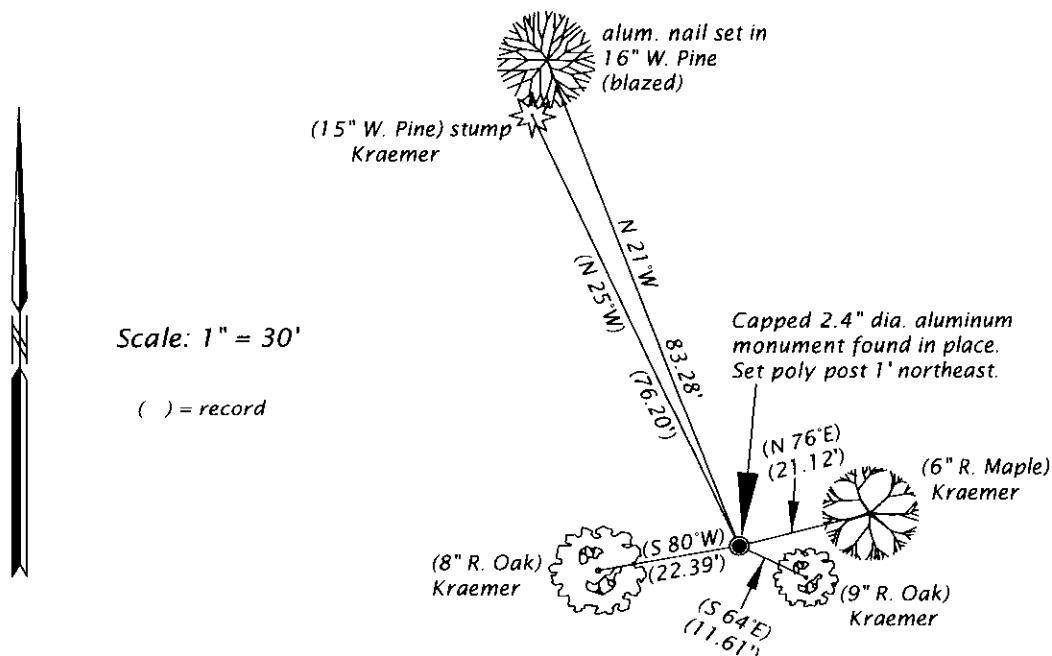
**SEE PREVIOUS USPLS MONUMENT  
RECORD DATED DEC. 28, 1983**

(f)(g)(h) DESCRIPTION OF MONUMENT FOUND AT THIS CORNER AND IF IT WAS ACCEPTED, STATE ALL EVIDENCE (MATERIAL, TESTIMONIAL, OCCUPATIONAL, PLATS, RECORD, OTHER MONUMENTS) USED AS A BASIS FOR ESTABLISHING LOCATION. IF NOT ACCEPTED OR IF NOTHING WAS FOUND, STATE EVIDENCE USED AS BASIS FOR ESTABLISHING LOCATION. IF REESTABLISHED THROUGH LOST CORNER PROPORTIONATE METHODS, INDICATE ALL MONUMENTS, DISTANCES AND DIRECTIONS USED TO ESTABLISH. INDICATE TYPE OF MONUMENT AND SIGN POST FOUND OR SET.

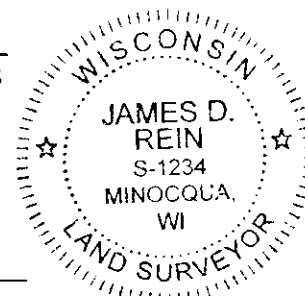
This is a perpetuation of a previous USPLS Monument Record by Jerome N. Kraemer, RLS, dated December 28, 1983, and filed in the office of the Oneida County Register of Deeds. A complete history of the corner can be found on the previous monument record. I accept the previous location as a true and faithful perpetuation or reestablishment of the original corner location and further perpetuate it as follows.

April 4, 2017, I found and accepted the capped aluminum monument set by Kraemer. His NW White Pine is now a stump. See below for reference ties.

(c)(d)(e) PLAN VIEW OF CORNER WITH TIES TO AT LEAST 4 WITNESS MONUMENTS. IF IN DISAGREEMENT WITH PREVIOUSLY ESTABLISHED CORNER, SHOW THE DISTANCE BETWEEN THE TWO CORNERS AND ALSO INDICATE THE TIES TO THE DISPUTED CORNER.



(i) I, JAMES D. REIN, PROFESSIONAL LAND SURVEYOR NO. S-1234 HEREBY CERTIFY THAT THE CORNER LOCATION ON THIS RECORD WAS DETERMINED BY ME OR UNDER MY DIRECTION AND CONTROL AND THAT THIS U.S. PUBLIC LAND SURVEY MONUMENT RECORD IS CORRECT AND COMPLETE TO THE BEST OF MY KNOWLEDGE AND BELIEF.



*[Handwritten Signature]*  
SIGNATURE

4-13-17  
DATE

INDEX NO. P-13  
3806212000