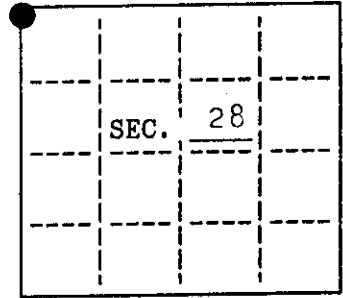


**U. S. PUBLIC LAND SURVEY MONUMENT RECORD**

Note: This form is intended and designed to fulfill all requirements of Wisconsin Administrative Code, Chapter A-E 7.08 U.S. Public Land Survey Monument Record (3)(a)(b)(c)(d)(e)(f)(g)(h)(i). An additional sheet may be added if necessary to conform with said requirements.

(a) CORNER LOCATION: State Plane Coordinates  
meander corner of Sec. 28 X \_\_\_\_\_  
 Township 38 North Y \_\_\_\_\_  
 Range 6 East Datum Base \_\_\_\_\_  
 Town/City Hazelhurst County of Oneida



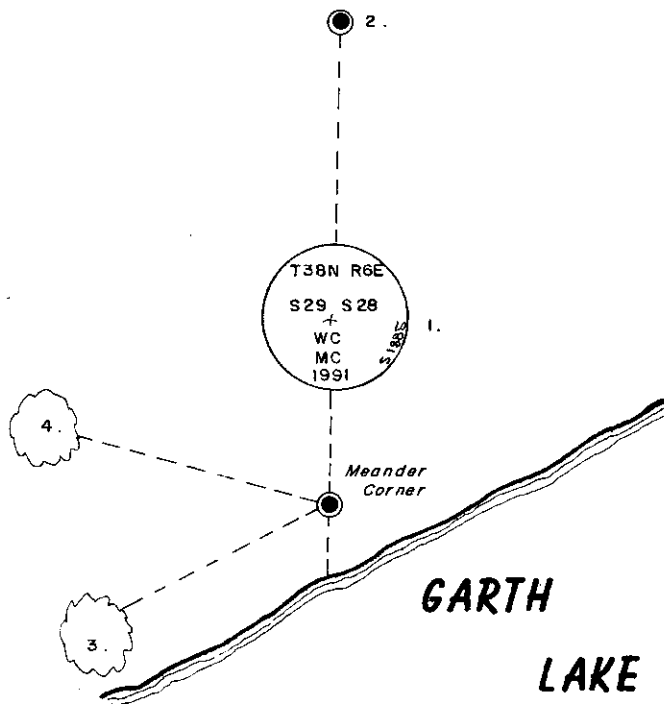
(b) HISTORY OF ORIGINAL CORNER ESTABLISHMENT  
 Original Surveyor: Alexander Anderson Original B.T.'S  
 Date of Survey: Commenced Sept. 1863 y.pine 10 S44°W, 32 lks.  
 Completed Oct. 1863 w.pine 18 N20°E, 61 lks.

(b)(f)(g)(h) Description of monument found at this corner and if it was accepted, state all evidence (material, testimonial, occupational, plats, records, other monuments) used as a basis for accepting. If not accepted or if nothing was found, state evidence used as basis for establishing location. If reestablished through lost corner proportionate methods, indicate all monuments, distances and directions used to establish. Indicate type of monument and sign post found or set.

March 13, 1941: CCC book 13, page 40: I identify North MC bet. 28&29 by scribe marks inside Norway. Assume this to be SW tree which agrees somewhat with large WP burned off and lying down. Set temporary pickett from which: orig. brs. S54°W, 21.1'; orig. brs. N63°E, 40.3'

September 21, 1991: I found and accepted a 1-1/2" dia. iron pipe 7 feet North of Garth Lake. I found the following witnesses: tap root of pine stump (GLO) N14°E, 39.0 feet; living scribed r.pine 20" (GLO) S47°W, 21.6 feet. I established the following witnesses: set a 2-1/2" dia., 30" long aluminum pipe with 3-1/4" dia. Oneida Co. aluminum cap set 5" above the ground and marked as shown N1°34.6'E, 22.17 feet; set aluminum monument (section cor.) N1°34.6'E, 65.74 feet; set nail in oak 8" S63°W, 34.72 feet; set nail in oak 8" N74°W, 21.55 feet; set plastic sign post Southwest, 2 feet. Also set Deep-1 magnet below witness corner.

(c)(d)(e) Plan view of corner with ties to at least 4 witness monuments. If in disagreement with previously established corner, show the distances between the two corners and also indicate the ties to the disputed.

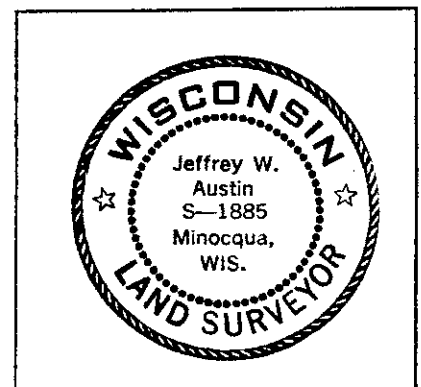


1. witness corner  
aluminum monument  
N1°34.6'E, 22.17 feet
  2. section corner  
aluminum monument  
N1°34.6'E, 65.74 feet
  3. nail in oak 8"  
S63°W, 34.72 feet
  4. nail in oak 8"  
N74°W, 21.55 feet
- not to scale

(i) I, Jeffrey W. Austin, Reg. Land Surveyor  
 hereby certify that the corner location on this record was determined by me or under my direction and control and that this U.S. Public Land Survey Monument Record is correct and complete to the best of my knowledge and belief.

Signature

10-28-1991  
Date



INDEX NO. RS-9

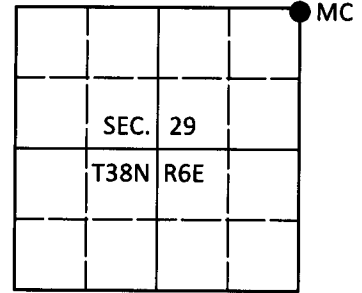
3806293900

# U.S. PUBLIC LAND SURVEY MONUMENT RECORD

Note: This form is intended and designed to fulfill all requirements of Wisconsin Administrative Code, Chapter A-E 7.08 U.S. Public Land Survey Monument Record (3)(a-i).

(a) CORNER LOCATION  
 Meander Cor. of Secs. 28 & 29  
 Township 38 North  
 Range 6 East of the 4th P.M.  
 Town of Hazelhurst  
 County of Oneida

WISCRS - Oneida County  
 N: 209,757.44 USft  
 E: 176,053.72 USft  
 Datum: NAD 83(2011)  
 GNSS Method: RTN - Offset  
 GNSS Control: WISCORS VRS



(b) HISTORY OF ORIGINAL CORNER ESTABLISHMENT

Original Surveyor:

Original Accessories:

Date of Survey

Commenced:  
Completed:

See previous USPLS Monument Record

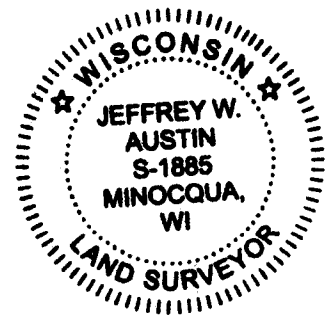
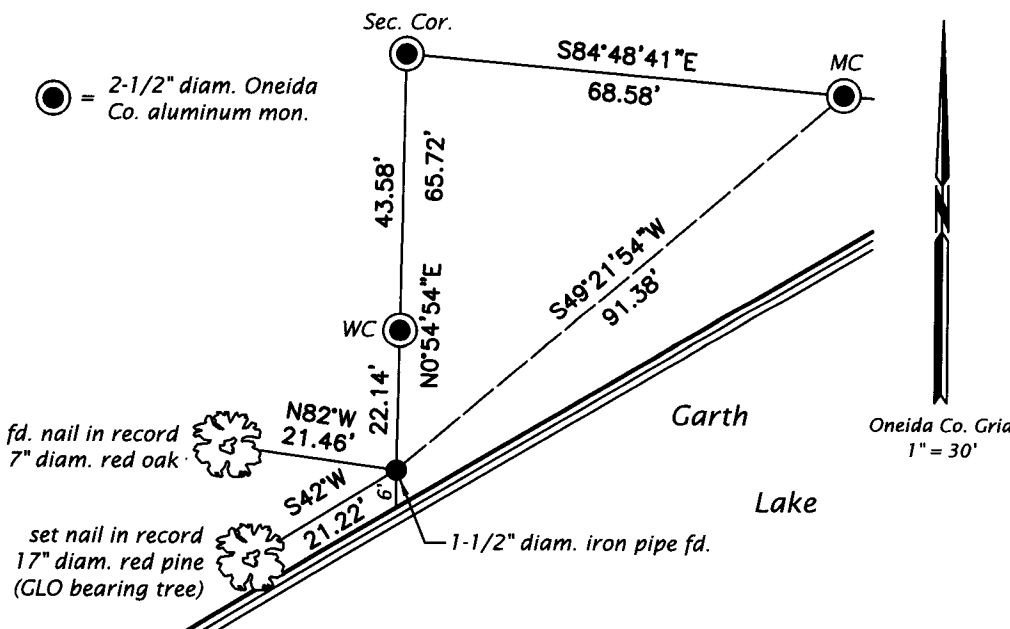
(b)(f)(g)(h) Description of monument found at this corner and if it was accepted, state all evidence (material, testimonial, occupational, plats, records, other monuments) used as a basis for accepting. If not accepted or if nothing was found, state evidence used as basis for establishing location. If re-established through lost corner proportionate methods, indicate all monuments, distances and directions used to establish. Indicate type of monument and sign post found or set.

*This is a perpetuation of a previous USPLS Monument Record by Jeffrey W. Austin, RLS dated October 28, 1991 and filed in the office of the Oneida County Register of Deeds. A complete history of the corner can be found on the previous monument record. I accept the previous location as a true and faithful perpetuation or reestablishment of the original corner location and further perpetuate it as follows.*

*April 8, 2018: I found and accepted the record monument, a 1-1/2" diam. iron pipe flush with the ground surface. The record bearing tree at 34.72' is down. I found or established accessories as shown below. I found a white vinyl sign post bearing Southwest, 1.8 ft.*

*The coordinate value shown has been verified by at least one of the following methods: 1) comparison to a previously GPS determined published value; 2) the value is the average of two or more GPS observations at a markedly different time; 3) one or more distances were measured back to the GPS observed corner from temporary GPS observed offset locations.*

(c)(d)(e) Plan view of corner with ties to at least 4 witness monuments. If in disagreement with previously established corner, show the distances between the two corners and also indicate the ties to the disputed.



REGISTER OF DEEDS OFFICE  
 ONEIDA COUNTY  
 FILED

MAY 01 2018

KYLE J. FRANSON  
 REGISTER OF DEEDS

(i) I, Jeffrey W. Austin, Professional Land Surveyor No. S-1885, hereby certify that the corner location on this record was determined by me or under my direction and control and that this U.S. Public Land Survey Monument Record is correct and complete to the best of my knowledge and belief.

*[Handwritten Signature]*

APR. 23, 2018  
 Date