

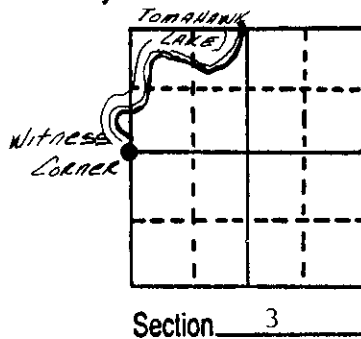
U.S. PUBLIC LAND SURVEY MONUMENT RECORD

Note: This form is intended and designed to fulfill all requirements of Wisconsin Administrative Code, Chapter A-E 5.02, U.S. Public Land Survey Monument Record (3) (a) (b) (c) (d) (e) (f) (g) (h) (i). An additional sheet may be added if necessary to conform with said requirements.

(a) Corner location: Township 38 North
Range 7 East/West

Town/City/Village Lake Tomahawk

County Oneida

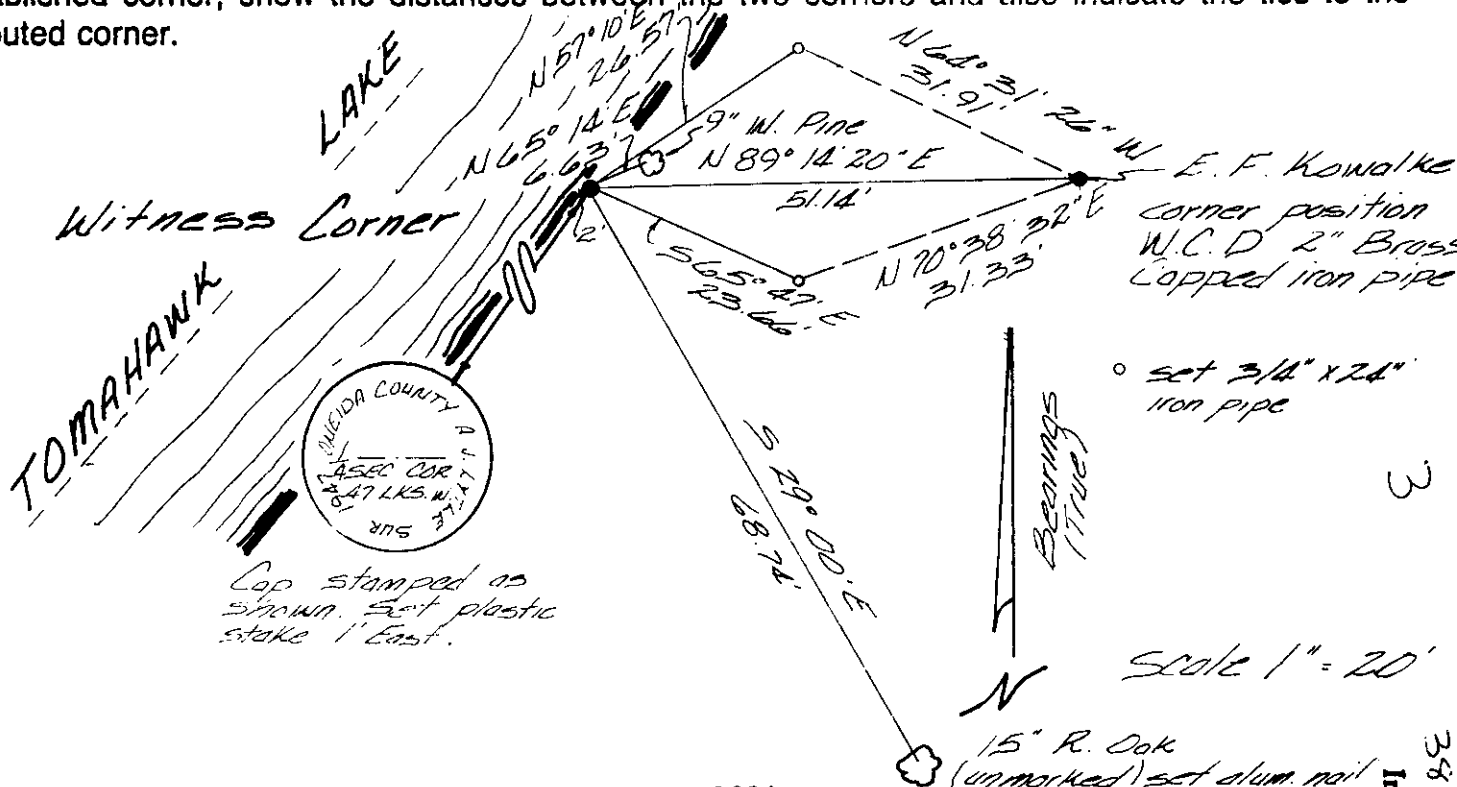


(b) (f) (g) (h) Description of monument found at this corner and if it was accepted, state all evidence (material, testimonial, occupational, plats, records, other monuments) used as a basis for accepting. If not accepted or if nothing was found, state evidence used as basis for establishing location. If reestablished through lost corner proportionate methods, indicate all monuments, distances and directions used to establish.

August 1863 - Alexander Anderson (Deputy Surveyor) - Set $\frac{1}{4}$ Section post, bearing trees:
Birch 9", S19 $\frac{1}{2}$ °W, 20 links; Y. Pine 18", N85 $\frac{1}{2}$ °E, 14 links.
June 24, 1893 - B. F. Dorr - Did not find $\frac{1}{4}$ Post, established on line W./M.C. on north side of lake in Township 39 North, between Sections 33 & 34.

*Continued on reverse side of form.

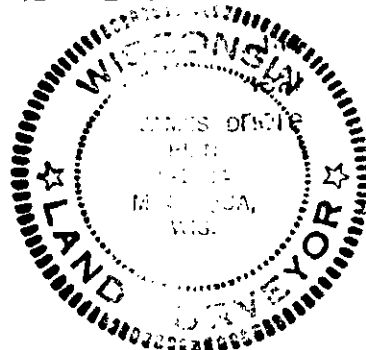
(c) (d) (e) Plan view of corner with ties to at least 4 witness monuments. If in disagreement with previously established corner, show the distances between the two corners and also indicate the ties to the disputed corner.



(i) I, James D. Rein, Registered Land Surveyor No. S-1234
(type or print name) certify that the corner location on this record was determined by me or under my direction and control and that this U.S. Public Land Survey Monument Record is correct and complete to the best of my knowledge and belief.

Signature

Date



3807032039
Index No. C-13

Stock No. 26273

March 1947 - A. J. Lytle, Oneida County Surveyor, re-established corner position by measuring from North $\frac{1}{4}$ Corner of Section 3, T38N, R7E, West 190.72 chains over ice on township line to M.C. in Section 5. He continued West a total distance of 200.80 chains to corner of Sections 5, 6, 31 and 32 identified by G.L.O. monument dated 1927 and stumps of two original B.T.'s. At 40.16 chains set northwest corner of Section 3 on ice. Found Dorr's corner to Section 3, 4, 9 and 10 run line north 40 chains, did not find $\frac{1}{4}$ Corner, 47.81 chains M.C. on south shore of Lake Tomahawk (said to be Vaughn's M.C. but no record of it); 73.16 chains fell 230 links east of Section Corner on ice; correct line, $\frac{1}{4}$ Corner in lake. Set witness post S89°-15'E, 0.47 links on E-W $\frac{1}{4}$ line; B.T.'s: Maple 14" S40°W, 28.5 links; W. Birch 10" N49°E, 62 links.

April 1957 - E. F. Kowalke, LS #403 - Survey map in Section 4, T38N, R7E, set brass cap iron pipe 51 feet East of Lytle's Witness Corner on a line with the meander corner between Sections 33 and 34 in T39N, R7E and by doubling through Dorr's S $\frac{1}{16}$ Corner.

February 9th, 1988 - James D. Rein, RLS - Accepted A. J. Lytle's record position for true corner location. Lytle used acceptable surveying principals, was acting in his official capacity as Oneida County Surveyor at the request of the Lake Tomahawk Town Board and filed a record of his survey. Corners and lines based upon this survey have been accepted as correct by the property owners for the past 40 years in this area. I set reference monuments and made bearing tree ties to aluminum nails as shown in plan view.

