

U.S. PUBLIC LAND SURVEY MONUMENT RECORD

Note: This form is intended and designed to fulfill all requirements of Wisconsin Administrative Code, Chapter A-E 7.08 U.S. Public Land Survey Monument Record (3) (a) (b) (c) (d) (e) (f) (g) (h) (i). An additional sheet may be added if necessary to conform with said requirements.

(a) Corner location: Township 38 North Corner: North 1/4

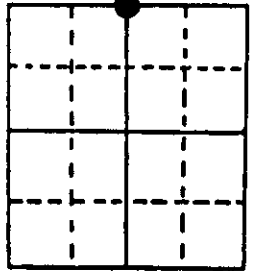
Section 9 Range 7 East Original Surveyor: Anderson/GLO

Town/City/Village Town of Lake Tomahawk

Original B.T.'s: 7" H. N43°W 14 lks
6" H. S39°E 23 lks

County Oneida

Original Survey Date: August 1863 ● Location

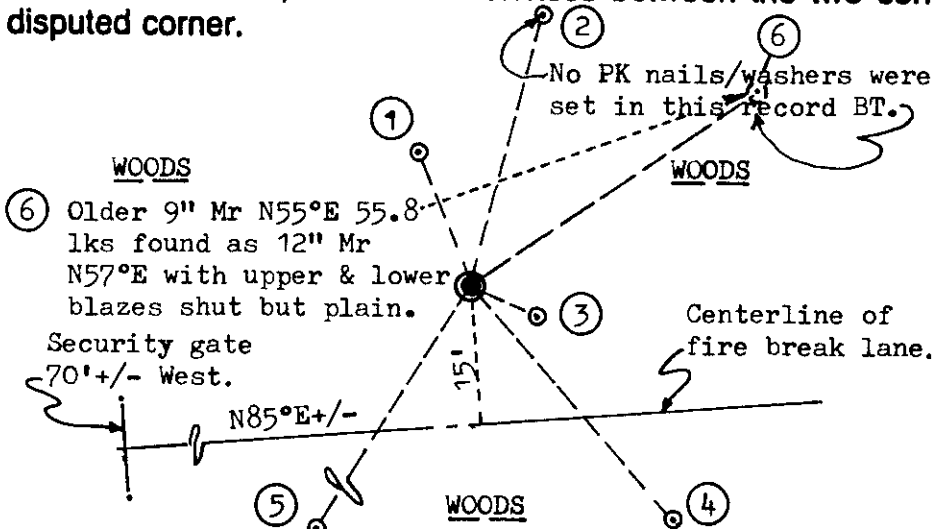


(b) (f) (g) (h) Description of monument found at this corner and if it was accepted, state all evidence (material, testimonial, occupational, plats, records, other monuments) used as a basis for accepting. If not accepted or if nothing was found, state evidence used as basis for establishing location. If reestablished through lost corner proportionate methods, indicate all monuments, distances and directions used to establish. Indicate type of monument found or set and sign post.

Found and accepted standard cast aluminum Berntsen monument with stamped State cap 5" below grade at corner. No GLO corner evidence or OBTs found. In 1965, Ilg/WCD set a 1/2" steel rod 5' long at corner with 18" high iron marker post by resurvey of Doors 1/4 line North to C1/4 corner of Sect. 4 in 1893. Ilg's BT 12" Mr N12°E 29.4 lks found as 15" Mr N14°E with face blazes shut but plain. In September 1996, Vissers/DNR found Ilg steel rod and IP marker post bent at surface, and replaced with cast aluminum monument I found and described above. I set a poly cap stamped Reference Mark in top of iron pipe reference monuments set by Vissers for witness ties 1 and 4 below. I also set a standard white fiberglass 'T' corner marker post 1' South of corner monument. Corner is located approximately 110 feet westerly of centerline of Rainbow Road, formerly County Highway 'D'. This corner recovery completed October 16, 1996; no witnesses present.

Note: 5" Hemlock BT at witness ties below found with new upper BT blaze and partly shut lower blaze.

(c) (d) (e) Plan view of corner with ties to at least 4 witness monuments. If in disagreement with previously established corner, show the distances between the two corners and also indicate the ties to the disputed corner.



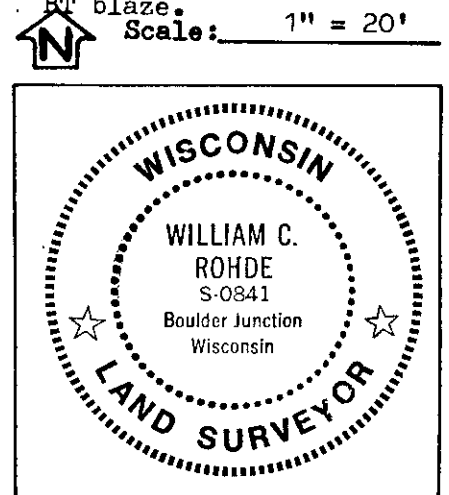
Witness Monument Ties:

- ① 1" dia. I.P. reference N21°W 15.07'.
 - ② 15" Mr N14°E 19.4' (Older BT with upper & lower blazes shut but plain)
 - ③ 5" H. S65°E 7.55'.
 - ④ S41°E 32.14' to 1" dia. I.P. reference monument.
 - ⑤ 8" H. S32°W 33.97'; PK/washer in lower left face, new upper BT blaze.
- Scale: 1" = 20'

Unless otherwise indicated, all BT witness monument ties are to a 1/4" dia. by 2.5" long PK nail with 1.25" dia. steel washer set in unblazed right face bark; and a PK nail with 2" dia. steel washer stamped BT also set in unblazed front face bark of each BT at DBH. All previous corner recovery notes from Wisconsin DNR and/or Oneida County survey records.

(i) I, William C. Rohde, RLS 841
(type or print name) certify that the corner location on this record was determined by me or under my direction and control and that this U.S. Public Land Survey Monument Record is correct and complete to the best of my knowledge and belief.

William C. Rohde 10/21/96
Signature Date



Index No. E-11