

U.S. PUBLIC LAND SURVEY MONUMENT RECORD

Note: This form is intended and designed to fulfill all requirements of Wisconsin Administrative Code, Chapter A-E 7.08 U.S. Public Land Survey Monument Record (3) (a) (b) (c) (d) (e) (f) (g) (h) (i). An additional sheet may be added if necessary to conform with said requirements.

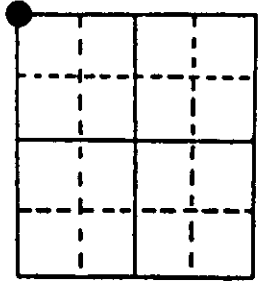
(a) Corner location: Township 38 North Corner: N W Section Corner

Section 13 Range 7 East Original Surveyor: A. Anderson

Town/City/Village Lake Tomahawk

Original B.T.'s: 8" Bw S78°E 88 lks
10" Pw S20°W 71 lks

County Oneida



Original Survey Date: August 1863 ● Location

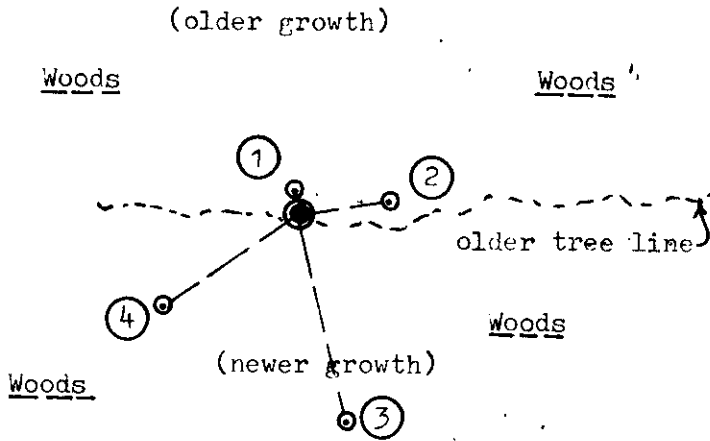
(b) (f) (g) (h) Description of monument found at this corner and if it was accepted, state all evidence (material, testimonial, occupational, plats, records, other monuments) used as a basis for accepting. If not accepted or if nothing was found, state evidence used as basis for establishing location. If reestablished through lost corner proportionate methods, indicate all monuments, distances and directions used to establish. Indicate type of monument found or set and sign post.

Found and accepted an undisturbed 1 1/4" dia. by 18 1/2" long iron pipe monument at this corner location with top 3" above existing grade. Corner is approximately 215' East and 115' North of the junction of abandoned north/south railroad and an east/west unimproved forest road SW of the corner. I replaced the iron pipe found with a standard 2" dia. by 48" long iron pipe monument with stamped Wis DNR brass cap 14" above grade; I left iron pipe found flat on ground next to new monument and also found a badly rotted old square wood post flat on ground near the monument location. Original GLO survey evidence at corner is obliterated. In 1976, Wilderness Surveying of Minocqua, Wis. found and used the iron pipe I found and replaced as the section corner for a resurvey and subdivision survey of Section 11, per their plat of survey #C-317 filed in Oneida County Surveyor records; their BTs: 20" Pr N60°W 10.4' is now a badly rotted stump but with lower face blaze open and plain, and 20" Pr N80°E 14.5' is now a 20" Pr with upper and lower face blazes open and plain. In 1982, Seymour/Wis DNR also found the iron pipe per the plat of survey by Wilderness Surveying and a square wood post at the corner, and noted recovery of same BTs. I set a standard white poly 'T' marker post 1 ft. North of the corner monument and flagged a line South to existing east-west forest roadway. Recovery completed 6/11/97; no witnesses.

(c) (d) (e) Plan view of corner with ties to at least 4 witness monuments. If in disagreement with previously established corner, show the distances between the two corners and also indicate the ties to the disputed corner.

Witness Monument Ties:

- ① New BT 6" Maple N13°W 3.53'.
- ② Record BT 20" Pr N80°E 14.81'.
- ③ New BT 6" Pw S12°E 33.47'.
- ④ New BT 5" Pw S57°W 26.01'.

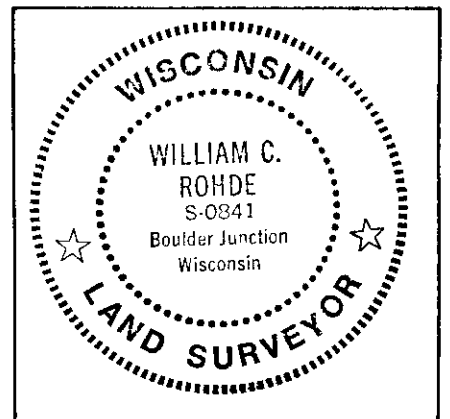


Corner monument is standard 2" dia. iron pipe with stamped Wisconsin DNR brass cap.

Unless otherwise indicated, all BT witness monument ties are to a 1/4" dia. by 2.5" long PK nail with 1.25" dia. steel washer set in unblazed right face bark; and a PK nail with 2" dia. steel washer stamped BT also set in unblazed front face bark of each BT at DBH. All previous corner recovery notes from Wisconsin DNR and/or Oneida County survey records.



Scale: 1" = 30'



(i) I, William C. Rohde, RLS 841
(type or print name) certify that the corner location on this record was determined by me or under my direction and control and that this U.S. Public Land Survey Monument Record is correct and complete to the best of my knowledge and belief.

William C. Rohde
Signature

June 18, 1997
Date