

# U.S. PUBLIC LAND SURVEY MONUMENT RECORD

**Note:** This form is intended and designed to fulfill all requirements of Wisconsin Administrative Code, Chapter A-E 5.02, U.S. Public Land Survey Monument Record (3) (a) (b) (c) (d) (e) (f) (g) (h) (i). An additional sheet may be added if necessary to conform with said requirements.

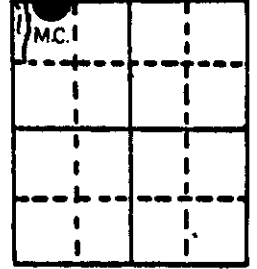
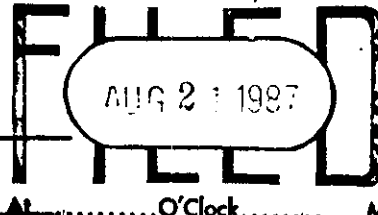
(a) Corner location: Township 38 North

Range 7 East/West

Town/City/Village Lake Tomahawk

County Oneida

REGISTER OF DEEDS OFFICE  
ONEIDA COUNTY, WIS.



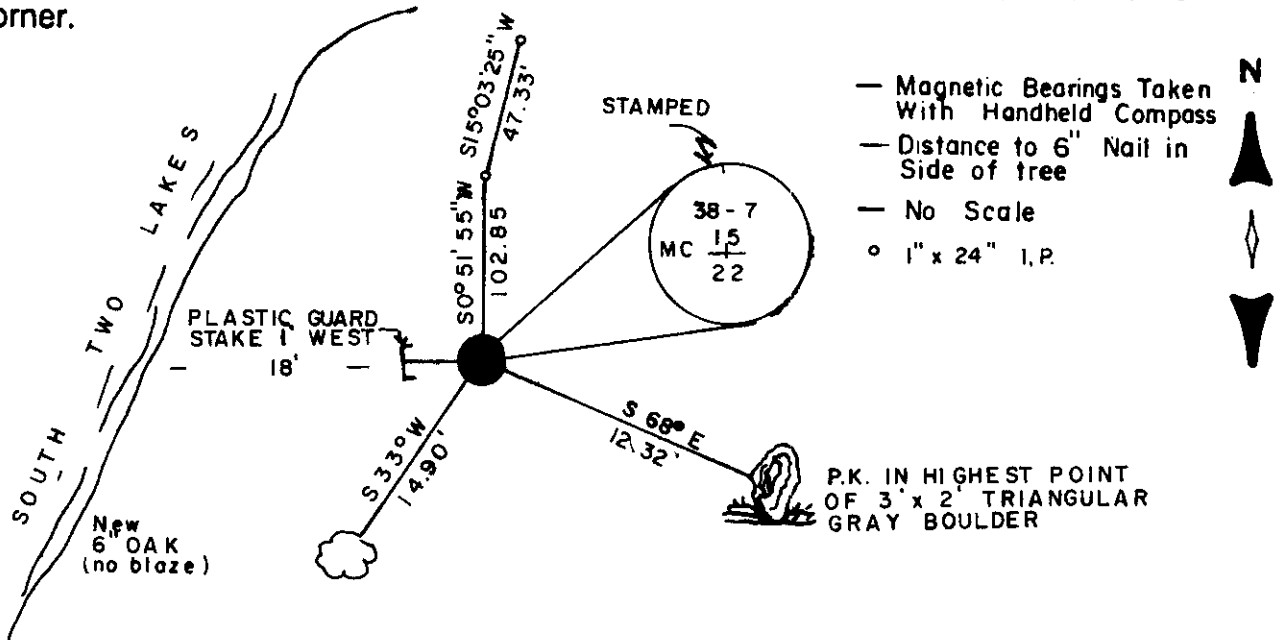
At ..... O'Clock ..... M  
DORIS VERAGE KUEHN  
REGISTER OF DEEDS

Section 22

(b) (f) (g) (h) Description of monument found at this corner and if it was accepted, state all evidence (material, testimonial, occupational, plats, records, other monuments) used as a basis for accepting. If not accepted or if nothing was found, state evidence used as basis for establishing location. If reestablished through lost corner proportionate methods, indicate all monuments, distances and directions used to establish.

- 1863 Alexander Anderson established original corner.... West between 15 & 22 1.50 leave lake; 40.00 set  $\frac{1}{4}$  corner; 66.50 lake set M.C. W pine 8 S 57 W 6; Y Pine 8 N 25 E 9
- 1949 F.R. Wincentzen, Oneida County Surveyor states he ran from  $\frac{1}{4}$  between 15 & 22 S 88° 30 W on sec. line (apparently along the fence line) 1805' to the East shore lake, set M.C. iron pipe, W pine 10 N 12 W 18' W. pine 4S 23W 14'
- 1965 J. Griffin indicates an iron pipe at the corner B.T.s 12" W. pine N 11 W 17.6, 4" W pine S 21 W 14.1. Distance to  $\frac{1}{4}$  corner=1693.4
- 1987 I found a  $\frac{1}{4}$  iron pipe for the corner and the 4" W pine stump and the 12" W pine which has been uprooted by the tornado. The pipe checks with the other work that Griffin did in the area and he apparently used the same corner as F.R. Wincentzen. I accepted the iron pipe as being the meander corner and replaced it with an Oneida County aluminum split base monument, placing a DEEP 1 magnet in the hole and witnessed the corner as shown. (Dis to  $\frac{1}{4}$  cor=1692.95)

(c) (d) (e) Plan view of corner with ties to at least 4 witness monuments. If in disagreement with previously established corner, show the distances between the two corners and also indicate the ties to the disputed corner.



(i) I, Michael J. Romportl

(type or print name) certify that the corner location on this record was determined by me or under my direction and control and that this U.S. Public Land Survey Monument Record is correct and complete to the best of my knowledge and belief.

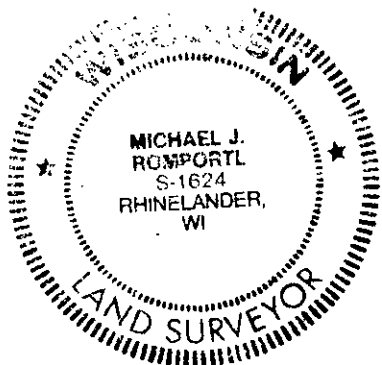
Michael J. Romportl

7-10-87

Signature

Date

GENISOT & ASSOCIATES INC.  
1512 EAGLE ST., RHINELANDER, WIS.



Index No. N 13-14

3807150033