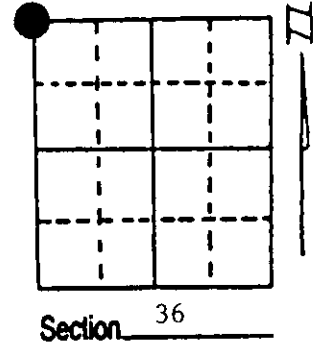


U.S. PUBLIC LAND SURVEY MONUMENT RECORD

Note: This form is intended and designed to fulfill all requirements of Wisconsin Administrative Code, Chapter A-E 7.08 U.S. Public Land Survey Monument Record (3) (a) (b) (c) (d) (e) (f) (g) (h) (i). An additional sheet may be added if necessary to conform with said requirements.

(a) Corner location: Township 38 North
 Range 7 East/West

Town/City/Village Lake Tomahawk
Oneida
 County _____



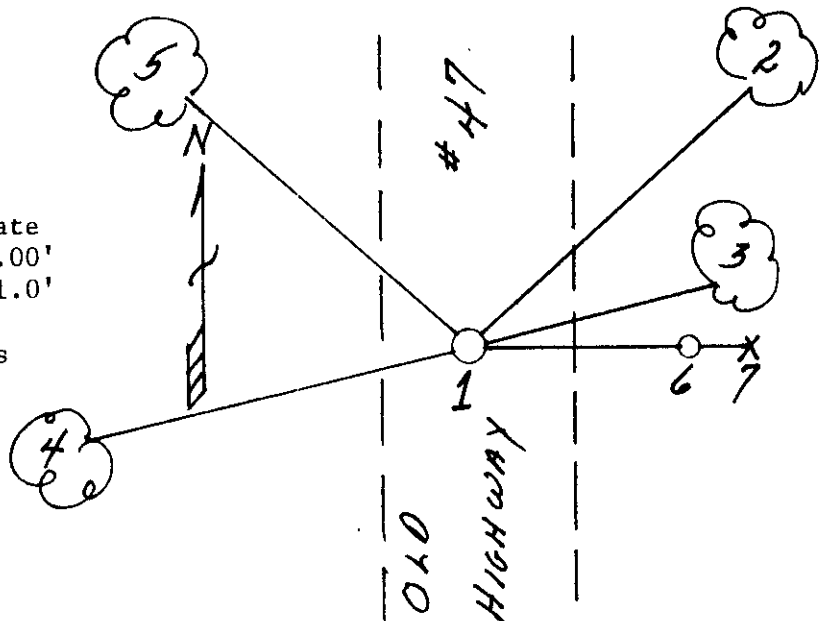
(b) (f) (g) (h) Description of monument found at this corner and if it was accepted, state all evidence (material, testimonial, occupational, plats, records, other monuments) used as a basis for accepting. If not accepted or if nothing was found, state evidence used as basis for establishing location. If reestablished through lost corner proportionate methods, indicate all monuments, distances and directions used to establish. Indicate type of monument found or set and sign post.

- 1863 - Joseph H. Jenkins established this corner, set a wood post with two BTs:
 16" White Pine, N54°W, 8 Links (5.28') 10" White Pine, S74°W 7 Links (4.62')
- ? - RIPCO restored this corner and set a Witness Corner East 50 links (33.00')
- 4/28/1996 - Milo E. Stefan found RIPCO'S monument (W.C.) with a railroad spike in blacktop road surface at proper distance and direction from W.C.
 We made three new BTs and set a plastic sign post.

(c) (d) (e) Plan view of corner with ties to at least 4 witness monuments. If in disagreement with previously established corner, show the distances between the two corners and also indicate the ties to the disputed corner.

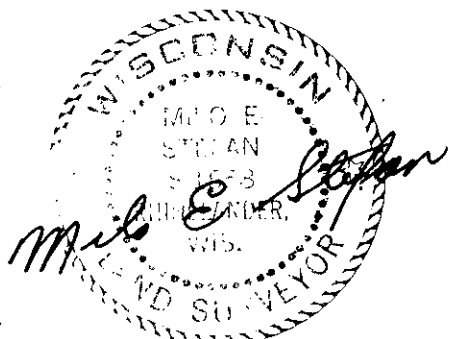
- 1) Railroad Spike.
- 2) 26" White Pine, N46°E, 87.02'
- 3) 10" Red Pine, N78°E, 52.19'
- 4) 8" Tamarack, S80°W, 77.00'
- 5) 8" Twin Tamarack, N57°W, 81.93'
- 6) 1 1/2" Iron Pipe/3" x 3" Brass Plate as a Witness Corner, East, 33.00'
- 7) Plastic Sign Post, East of W.C., 1.0'

Distances from nail in side of BTs
 Stump blaze scribed "BT"
 BT tags on face of each BT



(i) I, Milo E. Stefan
 (type or print name) certify that the corner location on this record was determined by me or under my direction and control and that this U.S. Public Land Survey Monument Record is correct and complete to the best of my knowledge and belief.

Milo E. Stefan June 19, 1996
 Signature Date

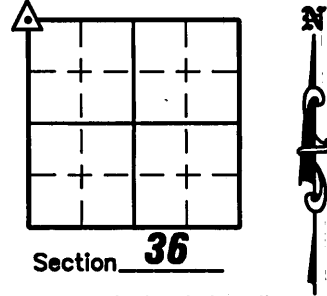


Index No. V-21
 Stamp
 3807260000

U.S. PUBLIC LAND SURVEY MONUMENT RECORD

NOTE: This form is intended and designed to fulfill all requirements of Wisconsin Administrative Code, Chapter A-E 7 .08 U.S. Public Land Survey Monument Record (3)(a)(b)(c)(d)(e)(f)(g)(h)(i). An additional sheet may be added if necessary to conform with said requirements.

(a) Corner location: Township 38 North
 Range 7 East
 Town of Lake Tomahawk
 County of Oneida



(b)(f)(g)(h) Description of monument found at this corner and if it was accepted, state all evidence (material, testimonial, occupation, plats, records, other monuments) used as a basis for accepting. If not accepted or if nothing was found, state evidence used as a basis for establishing location. If reestablished through lost corner proportionate methods, indicate all monuments, distances and directions used to establish. Indicate type of monument found or set and sign post.

1863 - Joseph H. Jenkins established this corner, set a wood post with two BT's: 16" White Pine, N54°W, 8 lks. (5.28'); 10" White Pine, S74°W 7 lks. (4.62').

???? - RIPCO restored this corner and set a Witness Corner East 50 Links (33.00').

April 28, 1996 - Milo E. Stefan found RIPCO'S monument (W.C.) with a railroad spike in blacktop road surface at proper distance and direction from W.C. He made 3 new BT's and set a plastic sign post 1' East on W.C.

June 27, 2008 - Due to road construction Nicolet Surveyors, Inc. was contacted by the Oneida County Land Information Office to preserve the location of this survey marker. Jonathan W. Dulin found a railroad spike 4 feet East of the centerline of Fox Road along with 4 bearing trees and a 1-1/2" Iron pipe with 3" square brass plate (RIPCO W.C.). We witnessed the corner as shown below.

November 7, 2008 - After road construction was complete we visited corner, checked the ties and set a Berntsen survey nail with cross on top.

(c)(d)(e) Plan view of corner with ties to at least 4 witness monuments. If in disagreement with previously established corner, show the distances between the two corners and also indicate the ties to the disputed corner.

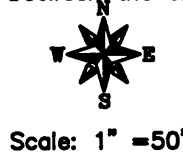
Legend

- Set 3/4" x 24" Iron Rebar Weighing 1.50 lbs/lin ft. W/Yellow Ref Cap
- ⊕ Found 1-1/2" Iron Pipe with 3" Square Brass Plate (RIPCO W.C.)
- △ Set Berntsen Survey Nail With Cross on top

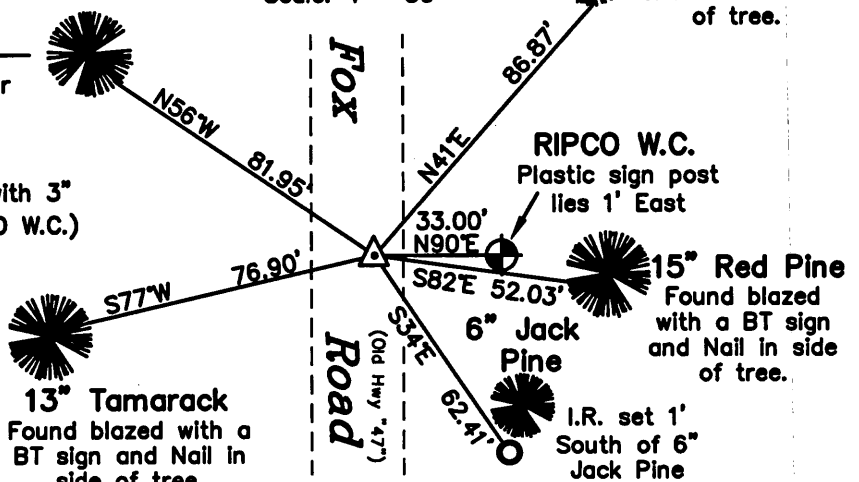
Notes:

1. All bearings taken with a compass and distances measured with a tape.
2. Corner lies 4' East of centerline.

17" Twin Tamarack
 Found blazed with a BT sign. Set New 60 P Nail in side of tree.

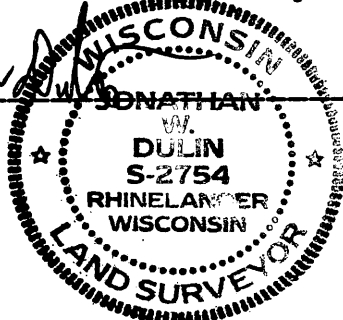


33" White Pine
 Found blazed with a BT sign and Nail in side of tree.

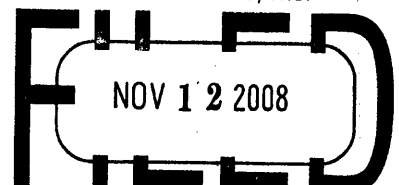


(i) I, Jonathan W. Dulin, certify that the corner location on this record was determined by me under my direction and control and that this U.S. Public Land Survey Monument is correct and complete to the best of my knowledge and belief.

Jonathan W. Dulin
 Signature Date 11/7/08



REGISTER OF DEEDS OFFICE
 ONEIDA COUNTY, WIS.



At _____ O'Clock _____ M
 THOMAS H. LEIGHTON
 REGISTER OF DEEDS

3807260000

Index No. V-21