

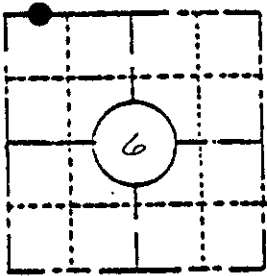
Stock No. 26273

U. S. PUBLIC LAND SURVEY MONUMENT RECORD

INSTRUCTIONS: This record shall show the location of the corner and shall include all of the following nine elements (a through i).

(a) Identify the corner by reference to the U.S. public land survey system.

West Meander Corner
North line of Section 6
T37N-R7E



Bearings True
Based on Solar

LOCATION SKETCH

(Location of landmark indicated by "•")

Corner History- Sept. 8, 1860 Alfred Millard, Deputy Surveyor set M.C. post, original bearing trees:

- White Birch 16", N43°E, 19 links (12.54 feet)
- Cedar 8", S 1°E, 28 links (18.48 feet)

July 27, 1919, D. H. Vaughan, Oneida County Surveyor found stump of the original Pine. Made new White Pine stump 20" S38°W, 35-1/2 links (23.43 feet)

August 14, 1931, H.C. Hall, Oneida County Surveyor verified the recovered corner positions by V. M. Maine in 1927 from the original Cedar (windfall) bearing tree. Drove a 1" x 36" gas pipe for corner monument. Drove a 2" boiler flu for W. C. 10 links East of Meander Corner. Made B.T.'s White Birch 4", N50°E, 0.065 ch; White Birch 6", S20°W, 0.065 chains; White Pine stump S13-1/2°W, 0.513 chains. D.H.V. post is S24-1/4°W 1.508 chains from W.C.

December 9, 1936- V. M. Maine, County Surveyor set new stake, now an iron pipe. See Hall's notes for new BTs.

August 9, 1961- Harold E. Berndt (D.N.R. survey record).

Found Hall's 2" boiler flue for M.C. witness corner. Set 2" brass cap. New BT's Ms 7", S61°E, 9 links,
OR 10", N53°E, 21-1/2 links

(b) Describe any record evidence, monument evidence, occupational evidence, testimonial evidence or any other material evidence you considered, and whether the monument was found or placed.

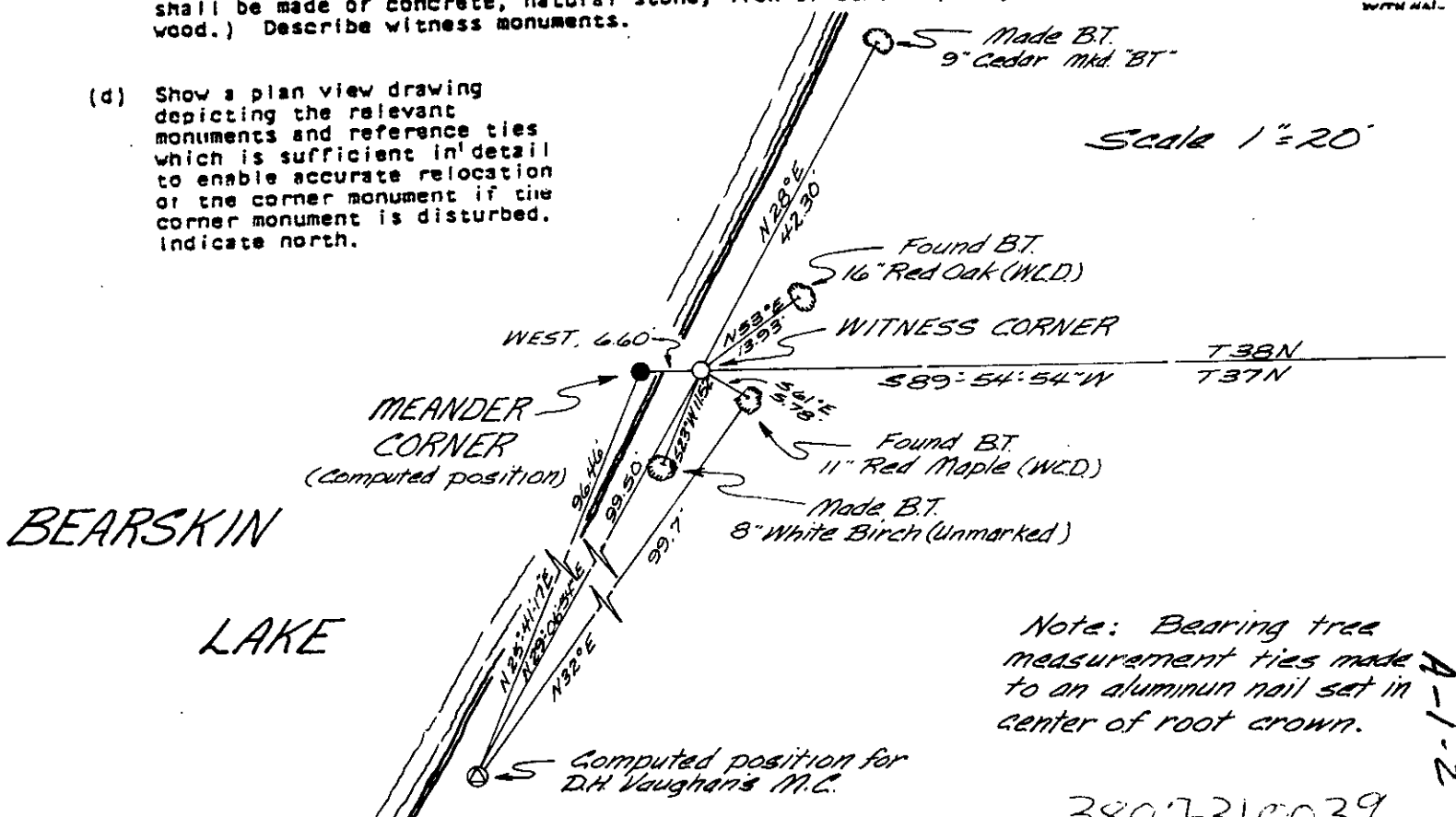
Found the witness corner to the meander corner, a 2 inch diameter iron pipe with a 3" diameter brass cap marked "WIT C. ORIG MC 10 LKS West"
Corner monument is located 4 feet East of lake shore.

Existing bearing trees:

- 16" Red Oak, N53°E, 13.93 feet
- 11" Red Maple, S61°E, 5.78 feet

(c) In the plan view drawing below, provide reference ties to at least 4 witness monuments, or, if the location is within a municipality, to at least 2 witness monuments. (Witness monuments shall be made of concrete, natural stone, iron or other equally durable material, except BTs-OK WITH HALL. wood.) Describe witness monuments.

(d) Show a plan view drawing depicting the relevant monuments and reference ties which is sufficient in detail to enable accurate relocation of the corner monument if the corner monument is disturbed. Indicate north.



3807310039

A-1-2

(c) Describe any material discrepancy between the location of the corner as restored or reestablished and the location of that corner as previously restored or reestablished by distance and direction. Show the discrepancy on the plan view drawing under (d), above. Show the distances between the corner as previously restored or reestablished and (1) the corner as restored or reestablished, and (2) to at least 2 of the witness monuments shown on the drawing in (d), above.

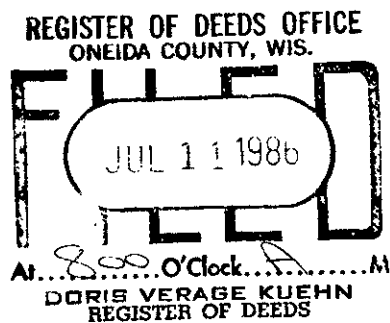
An erroneous corner position as re-established by D. H. Vaughan in 1919 was used as the basis for laying out the unrecorded plat of Bearskin Heights in Section 6, T37N, R7E. Although no physical evidence of the corner monument was recovered, I have shown the computed position, based upon information shown on Survey Map 2844 by Genisot Engineering Co. dated September 13, 1961.

(f) Was the corner restored through acceptance of (1) an obliterated evidence location, or, (2) a found perpetuated location?

The corner position was restored through acceptance of a found perpetuated location.

(g&h) Was the corner reestablished through lost corner proportionate methods? If so, show the method, including the directions and distances to other public land survey corners used as evidence or used for proportioning in determining the corner location?

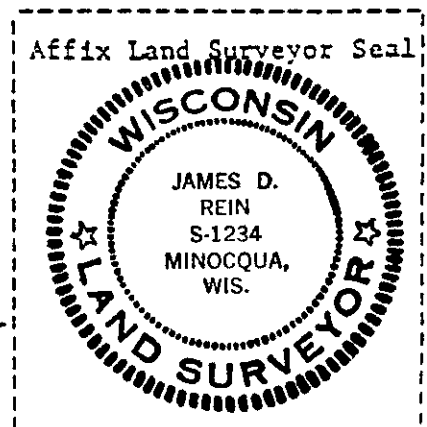
No.



JAMES D. REIN

(i) I, JAMES D. REIN
(type or print name) certify that the corner location shown on this record was determined by me or under my direction and control and that this U.S. Public Land Survey Monument Record is correct and complete to the best of my knowledge and belief.

James D. Rein June 13th, 1983
Signature Date



U.S. PUBLIC LAND SURVEY MONUMENT RECORD

Note: This form is intended and designed to fulfill all requirements of the Wisconsin Administrative Code, Chapter A-E 7.08 U.S. Public Land Monument Record (3)(a)(b)(c)(d)(e)(f)(g)(h)(i). An additional sheet may be added if necessary to conform with said requirements.

REGISTER OF DEEDS OFFICE
ONEIDA COUNTY
FILED

JAN 13 2021

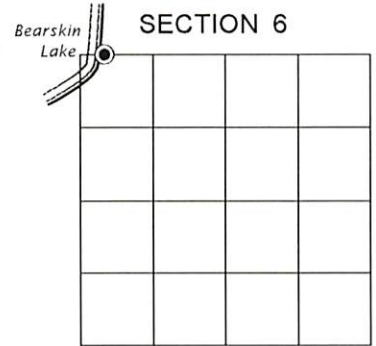
KYLE J. FRANSON
REGISTER OF DEEDS

(a) CORNER LOCATION:

Witness Meander Corner of Section 6
Township 37 North
Range 7 East
Town of Cassian
County of Oneida

North:
East:
Datum:
GNSS Method:
GNSS Control:

(RECORDING AREA)



(b) HISTORY OF ORIGINAL CORNER ESTABLISHMENT

Original Surveyor:
Date of Survey: Commenced
Completed
Original B.T.'S

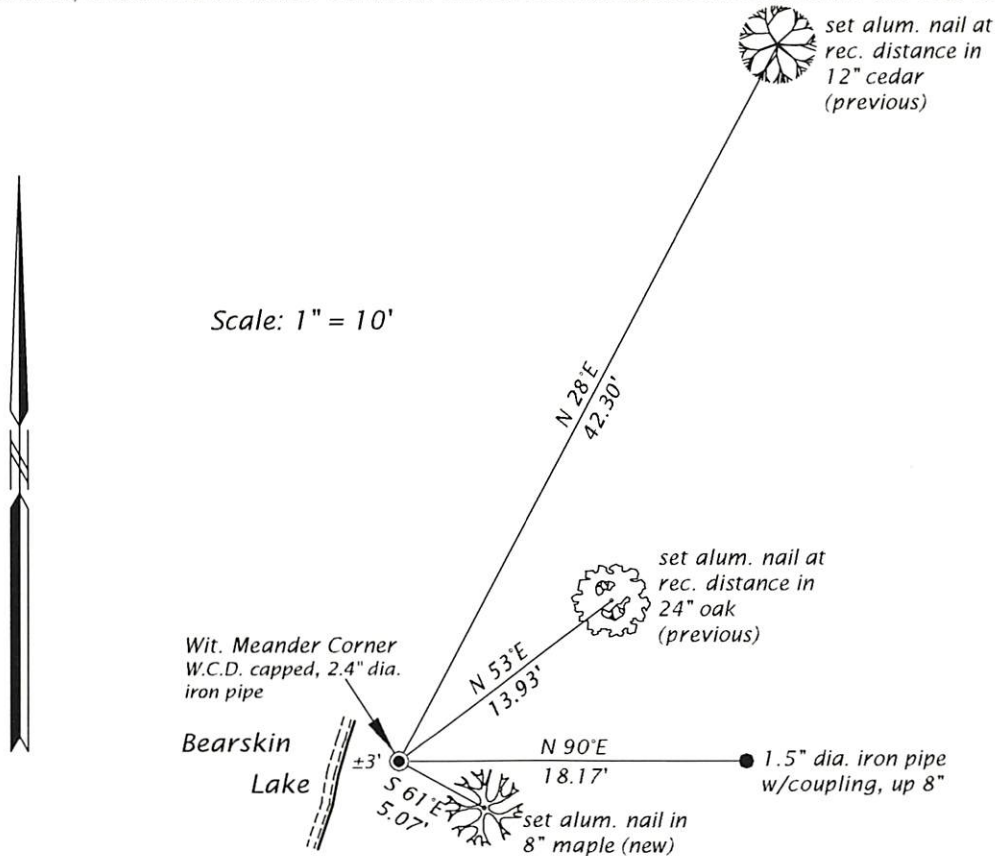
SEE PREVIOUS U.S.P.L.S. MONUMENT
RECORD DATED JUNE 13, 1983.

(f)(g)(h) DESCRIPTION OF MONUMENT FOUND AT THIS CORNER AND IF IT WAS ACCEPTED, STATE ALL EVIDENCE (MATERIAL, TESTIMONIAL, OCCUPATIONAL, PLATS, RECORD, OTHER MONUMENTS) USED AS A BASIS FOR ESTABLISHING LOCATION. IF NOT ACCEPTED OR IF NOTHING WAS FOUND, STATE EVIDENCE USED AS BASIS FOR ESTABLISHING LOCATION. IF REESTABLISHED THROUGH LOST CORNER PROPORTIONATE METHODS, INDICATE ALL MONUMENTS, DISTANCES AND DIRECTIONS USED TO ESTABLISH. INDICATE TYPE OF MONUMENT AND SIGN POST FOUND OR SET.

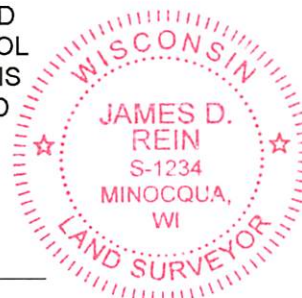
This is a perpetuation of a previous U.S.P.L.S. Monument Record by James D. Rein, RLS, dated June 13, 1983, and filed in the office of the Oneida County Register of Deeds. A complete history of the corner can be found on the previous monument record. I accept the previous location as a true and faithful perpetuation or reestablishment of the original corner location and further perpetuate it as follows.

December 24, 2020 - James D. Rein, P.L.S. No. S-1234, we found, and I accepted the W.C.D. witness meander corner shown on the previous Monument Record dated June 13, 1983. The southeasterly and southwesterly bearing trees are now gone. See below for updated reference ties.

(c)(d)(e) PLAN VIEW OF CORNER WITH TIES TO AT LEAST 4 WITNESS MONUMENTS. IF IN DISAGREEMENT WITH PREVIOUSLY ESTABLISHED CORNER, SHOW THE DISTANCE BETWEEN THE TWO CORNERS AND ALSO INDICATE THE TIES TO THE DISPUTED CORNER.



(i) I, JAMES D. REIN, PROFESSIONAL LAND SURVEYOR NO. S-1234 HEREBY CERTIFY THAT THE CORNER LOCATION ON THIS RECORD WAS DETERMINED BY ME OR UNDER MY DIRECTION AND CONTROL AND THAT THIS U.S. PUBLIC LAND SURVEY MONUMENT RECORD IS CORRECT AND COMPLETE TO THE BEST OF MY KNOWLEDGE AND BELIEF.



[Handwritten Signature]

1-06-21
DATE

INDEX NO. A 1-2
3807310039