

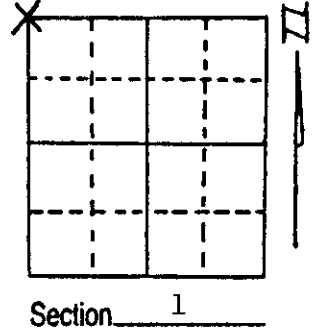
# U.S. PUBLIC LAND SURVEY MONUMENT RECORD

Note: This form is intended and designed to fulfill all requirements of Wisconsin Administrative Code, Chapter A-E 7.08 U.S. Public Land Survey Monument Record (3) (a) (b) (c) (d) (e) (f) (g) (h) (i). An additional sheet may be added if necessary to conform with said requirements.

(a) Corner location: Township 37 North  
 Range 7 East/West

Town/City/Village Lake Tomahawk

County Oneida



(b) (f) (g) (h) Description of monument found at this corner and if it was accepted, state all evidence (material, testimonial, occupational, plats, records, other monuments) used as a basis for accepting. If not accepted or if nothing was found, state evidence used as basis for establishing location. If reestablished through lost corner proportionate methods, indicate all monuments, distances and directions used to establish.

September 8,, 1860 Alfred Millard set post for section corner:

- 6" White Pine, N65°W, 7 Links (4.62')
- 12" White Pine, S70°W, 34 Links (22.44')
- 12" White Pine, S76°E, 22 Links (14.52')
- 12" White Pine, N86°E, 24 Links (15.84')

September 19, 1936 Maine restored corner from west and south, set county cap and made two BTs:

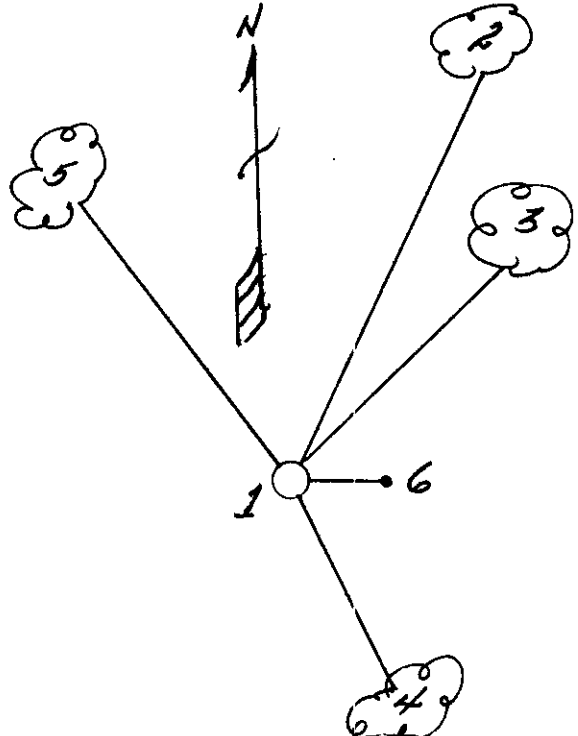
- 8" Black Oak, N22°E, 194 1/2 Links (128.37')
- 7" Black Oak, N44°W, 112 1/2 Links (74.25')

May 16, 1988 Milo E. Stefan found, DNR brass cap on 2" iron pipe 6" below surface. Both of Maine's BTs okay. Two new BTs by unknown parties:

- 8" Red Oak, N25°E, 82.73 Feet
- 8" Red Pine, S32°E, 67.17 Feet

(c) (d) (e) Plan view of corner with ties to at least 4 witness monuments. If in disagreement with previously established corner, show the distances between the two corners and also indicate the ties to the disputed corner.

1. DNR brass cap on iron pipe
  2. 18" Red Oak, N22°E, 128.47' (S-36)
  3. 8" Red Oak, N25°E, 67.17' (S-36 BT)
  4. 8" Red Pine, S25°E, 82.73' (S 1 BT)
  5. 20" Red Oak, N44°W, 74.37'
  6. Plastic sign post, east, 16.5' (scribed accordingly)
- Distances to nail in side of trees.



(i) I, Milo E. Stefan  
 (type or print name) certify that the corner location on this record was determined by me or under my direction and control and that this U.S. Public Land Survey Monument Record is correct and complete to the best of my knowledge and belief.

Milo E. Stefan  
 Signature

May 16, 1988  
 Date



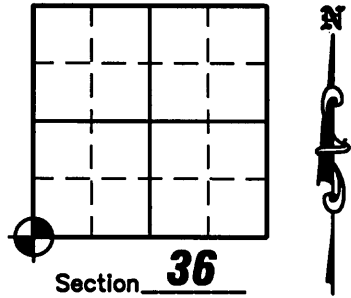
Index No. A-21

3807350000

# U.S. PUBLIC LAND SURVEY MONUMENT RECORD

NOTE: This form is intended and designed to fulfill all requirements of Wisconsin Administrative Code, Chapter A-E 7 .08 U.S. Public Land Survey Monument Record (3)(a)(b)(c)(d)(e)(f)(g)(h)(i). An additional sheet may be added if necessary to conform with said requirements.

(a) Corner location: Township 38 North  
 Range 7 East  
 Town of Lake Tomahawk  
 County of Oneida



(b)(f)(g)(h) Description of monument found at this corner and if it was accepted, state all evidence (material, testimonial, occupation, plats, records, other monuments) used as a basis for accepting. If not accepted or if nothing was found, state evidence used as a basis for establishing location. If reestablished through lost corner proportionate methods, indicate all monuments, distances and directions used to establish. Indicate type of monument found or set and sign post.

September 8, 1860 - Alfred Millard set original post for Section Corner: BT's: 6" White Pine, N65°W, 7 lks. (4.62'); 12" White Pine, S70°W, 34 lks. (22.44'); 12" White Pine, S76°E, 22 lks. (14.52'); 12" White Pine, N86°E, 24 lks., (15.84').

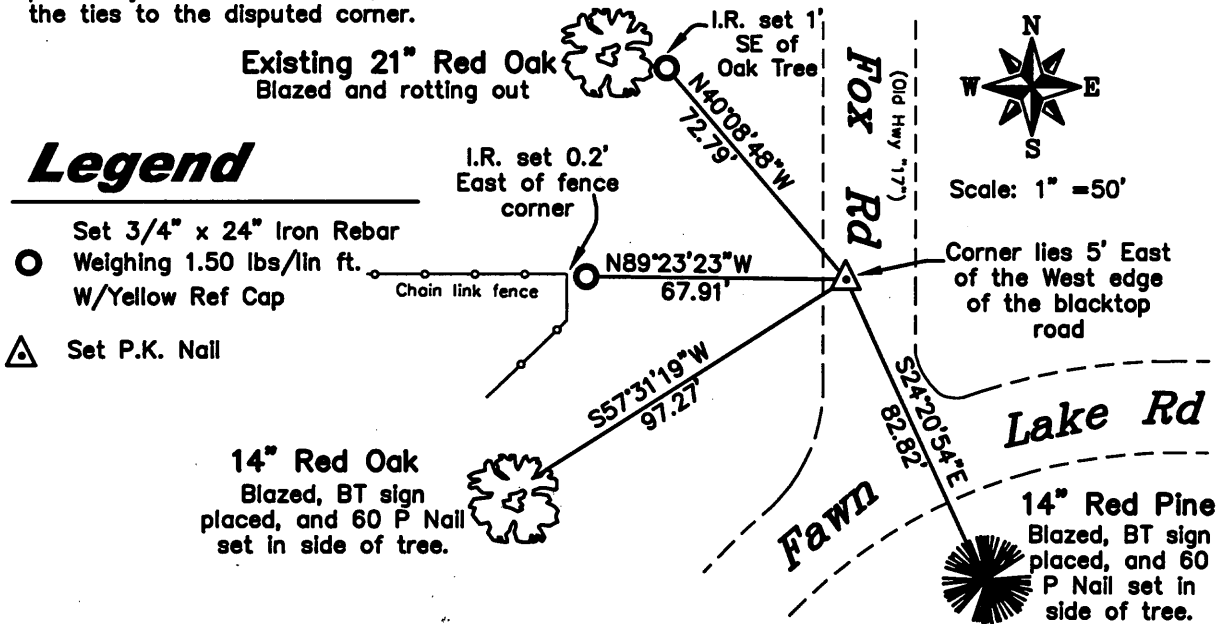
September 19, 1936 - Maine restored corner from West and South and set County cap and made two BT's: 8" Black Oak, N22°E, 194.5 lks. (128.37'); 7" Black Oak, N44°W, 112.5 lks. (74.25')

May 16, 1988 - Milo E. Stefan found DNR brass cap on a 2" iron pipe 6" below the surface. He found both of Maine's BT's in good condition and two unknown BT's: 8" Red Oak, N25°E, 82.73'; 8" Red Pine, S32°E, 67.17'

June 27, 2008 - Due to road construction Nicolet Surveyors, Inc. was contacted by the Oneida County Land Information Office to preserve the location of this survey marker. Jonathan W. Dulin found a 2" brass capped iron pipe stamped "DNR SURVEY CORNER". We witnessed the corner as shown below.

November 7, 2008 - After road construction was complete we visited corner, checked the ties and set a P.K. nail.

(c)(d)(e) Plan view of corner with ties to at least 4 witness monuments. If in disagreement with previously established corner, show the distances between the two corners and also indicate the ties to the disputed corner.

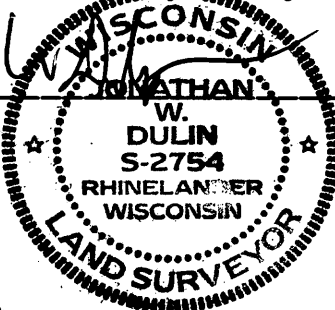


## Legend

- Set 3/4" x 24" Iron Rebar Weighing 1.50 lbs/lin ft. W/ Yellow Ref Cap
- △ Set P.K. Nail

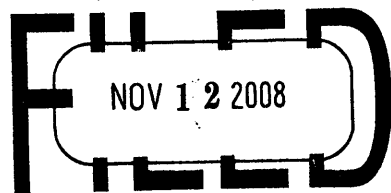
(i) I, Jonathan W. Dulin, certify that the corner location on this record was determined by me under my direction and control and that this U.S. Public Land Survey Monument is correct and complete to the best of my knowledge and belief.

*Jonathan W. Dulin*  
 Signature



11/9/08  
 Date

REGISTER OF DEEDS OFFICE  
 ONEIDA COUNTY, WIS.



At \_\_\_\_\_ O'Clock \_\_\_\_\_ M  
 THOMAS H. LEIGHTON  
 REGISTER OF DEEDS

3807350000  
 Index No. Z-21