

U.S. PUBLIC LAND SURVEY MONUMENT LOCATION RECORD

Recorders Data

CORNER: East Witness MC SECTION: 7 TOWNSHIP 38 NORTH RANGE 8 EASTWEST

FOR M.C. CORNER INDICATE: NAME OF WATERWAY Wisconsin River SECTION LINE North

(CITY)(VILLAGE)(TOWN) OF: Newbold COUNTY OF: Oneida

Description of monument found or placed and all other evidence used as a basis for monument location; including all monuments and related measurements required if the corner location is reestablished by lost corner proportionate methods. Also indicate name of original surveyor, survey date, corner monument set and established bearing trees, witness or reference monuments with ties from available records.

Found and accepted a standard 2" dia. aluminum pipe monument with stamped Oneida County cap 4" above existing grade and tipped North about 15°; new ties measured to cap center as found.

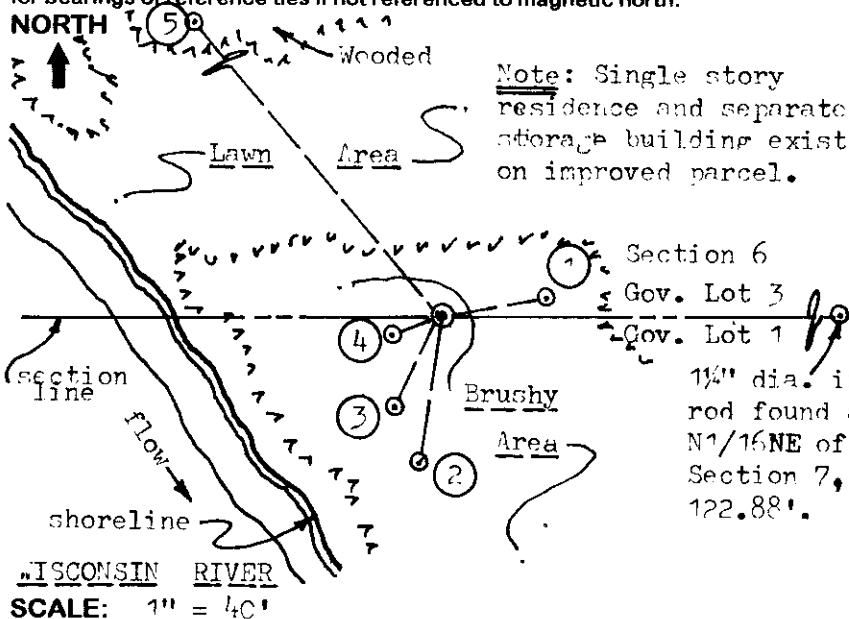
In 1865, Anderson/GLO set a wood post as the original meander corner and marked OBTs, a 12" Bw N89°E 181 lks and a 2" Aspen S68°E 104 lks, all of which are now obliterated.

In 1974, Fisher/Northwoods Surveyors, set an iron rod as a witness MC on the left(East) bank of the Wisconsin River on the North line of Section 7 per his Plat of Survey filed as B-799 and also as B-1352 and B-2914 in Oneida County survey records; and his noted BTs a 11" Bw N88°E 24.7' is now a sawed off 12" Bw twin stumps, and his 8" Bw N37°W 27.7' is now one of three sawed off stumps found at N35°W 28'+/-.

In 1997, during a survey of the adjoining parcel area, Foltz and Associates found the 1 1/4" dia. iron rod by Fisher in 1974, and a 1" dia. marker iron pipe nearby, and replaced the iron rod with a standard 2" dia. by 30" long aluminum pipe monument with stamped Oneida County cap as the new meander corner monument found by this recovery, and marked four(4) new BTs with PK nails which I found and accepted for new corner ties indicated below. The old iron rod and iron pipe marker were found flat on grade near aluminum monument set.

This recovery completed July 17, 1998; there were no direct witnesses but I notified owner.

Plan view map of monument location with bearing and distance ties to a minimum of four(4) described witness or reference monuments of concrete, natural stone, iron, live bearing trees or equivalent material. If applicable, also show a minimum of two(2) bearing and distance ties to any other monument found and not accepted; including the bearing and distance from the accepted monument. Indicate the basis for bearings of reference ties if not referenced to magnetic north.



WITNESS MONUMENT TIES:

- ① New BT 9" Ash N80°E 21.84' to PK nail found in SW face.
- ② 1" dia. iron pipe found with poly cap stamped Foltz S-1170 flush to grade S09°W 31.24'.
- ③ New BT 9" Mr of seven(7) in clump S28°W 21.00' to PK nail found in NW face at root crown.
- ④ New BT 5" Ash S72°W 11.10' to PK nail found in SE face/root crown.
- ⑤ New BT 13" Ash N40°W 90.12' to PK nail found in left face at root crown.

Note: Standard white poly 'T' marker post found 1' NNE of corner.

Unless otherwise indicated, all bearing tree ties are to a .25" dia. by 2.5" long PK nail with a 1.25" dia. steel washer driven into unblazed right face and a .25" dia. by 2.5" long PK nail with a 2" dia. steel washer stamped 'BT' is also driven into unblazed face of bearing tree at DBH; the basis for measured bearings is magnetic to nearest degree and all tie distances are horizontal measure to nearest 1/100th feet.

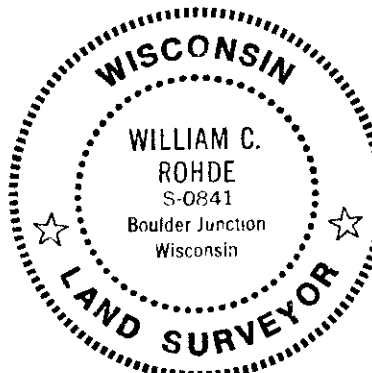
LAND SURVEYOR CERTIFICATION:

I, William C. Rohde, hereby certify that I am a duly licensed Professional Land Surveyor in Wisconsin, that this USPLS monument location was determined by me or under my direction and control, and that this U.S. Public Land Survey Monument Location Record is true and correct to the best of my knowledge and belief.

William C. Rohde Date: 7-26-98
Signature

		7	

INDEX NO.



RLS SEAL

SHEET NO. 1 OF 1

This form is intended to fulfill requirements of Chapter A-E 7.08 (3)(a)(b)(c)(d)(e)(f)(g)(h)(i) U.S. Public Land Survey Monument Location Record, Wisconsin Administrative Code. Use reverse side for geodetic location data and/or continuation purposes.

SECTION LOCATION MAP

INDEX NO. E 3-4

380806 0012