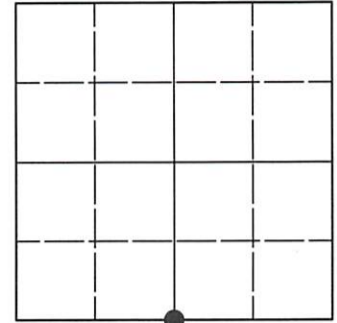


U.S. PUBLIC LAND SURVEY MONUMENT RECORD

Note: This form is intended and designed to fulfill all requirements of Wisconsin Administrative Code, Chapter A-E 7.08 U.S. Public Land Survey Monument Record (3)(a-i).

(a) CORNER LOCATION
 1/4 Cor. of Secs. 10 & 15
 Township 38 North
 Range 8 East of the 4th P.M.
 Town of Newbold
 County of Oneida

WISCRS - Oneida County
 N: 220,057.58 USft
 E: 246,793.87 USft
 Datum: NAD 83(2011) ep. 2010.00
 GNSS Method: RTN - Direct
 GNSS Control: WISCORS VRS



Sec. 10, T. 38 N., R. 8 E.

(b)(f)(g)(h) Description of monument found at this corner and if it was accepted, state all evidence (material, testimonial, occupational, plats, records, other monuments) used as a basis for accepting. If not accepted or if nothing was found, state evidence used as basis for establishing location. If re-established through lost corner proportionate methods, indicate all monuments, distances and directions used to establish. Indicate type of monument and sign post found or set.

July, 1863: GLO survey by Alexander Anderson, U.S. Deputy Surveyor. West corrected between Secs. 10 and 15, at 40.45 chs. set a wood post witnessed by: aspen 10 S9°W, 30 lks.; birch 10 N9°E, 24 lks.

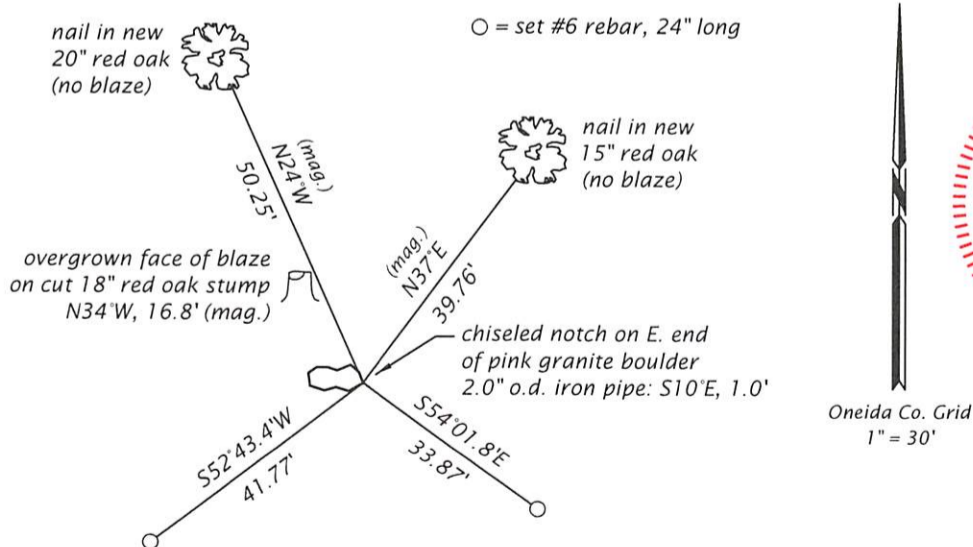
1951: On OCS Map No. L-696, Wisconsin DNR/Genisot Engineering identifies corner as "on rock" witnessed by: iron pipe South, 1.5 lks.; oak 8" N26°W, 0.252 ch.

March 13, 1990: On OCS Map No. L-1076, William C. Rohde identifies corner as "on rock" witnessed by: iron pipe South, 1.0 ft.; oak 8" N26°W, 16.6 ft. On this map, Rohde also set the West 1/16 cor. at the midpoint of the half-mile.

July 23, 2023: I found and accepted the record monument, a distinct notch chiseled on the East end of a pink granite boulder. I also found the record witness monument, a 2.0" o.d. iron pipe bearing S10°E, 1.0 feet. The record oak bearing tree has been cut, but the overgrown face is very evident on the stump. To confirm the notch as correct, I measured the West 1/16 cor. on this section line and found it to be at the longitudinal midpoint of a line connecting the notch and 3808090000 measured previously. It's also very near the midpoint of the section line as defined by previous GNSS measurements by Aero-Metric. I found or established accessories as indicated below. I set a white vinyl sign post adjacent to the iron pipe witness.

The coordinate value shown is the weighted mean of two or more GNSS observations at markedly different times satisfying the accuracy requirements defined and qualified in the 2022 Oneida County Fee Schedule for USPLS Corners.

(c)(d)(e) Plan view of corner with ties to at least 4 witness monuments. If in disagreement with previously established corner, show the distances between the two corners and also indicate the ties to the disputed.



REGISTER OF DEEDS OFFICE
 ONEIDA COUNTY
 FILED

AUG 07 2023

KYLE J. FRANSON
 REGISTER OF DEEDS

(i) I, Jeffrey W. Austin, Professional Land Surveyor No. S-1885, hereby certify that the corner location on this record was determined by me or under my direction and control and that this U.S. Public Land Survey Monument Record is correct and complete to the best of my knowledge and belief.

[Handwritten Signature]

 Signature

AUG 1, 2023

 Date