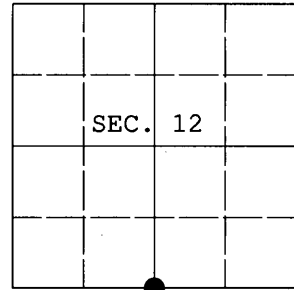


U. S. PUBLIC LAND SURVEY MONUMENT RECORD

Note: This form is intended and designed to fulfill all requirements of Wisconsin Administrative Code, Chapter A-E 7.08 U.S. Public Land Survey Monument Record (3) (a) (b) (c) (d) (e) (f) (g) (h) (i). An additional sheet may be added if necessary to conform with said requirements.

(a) CORNER LOCATION: Plane Coordinates
 1/4 Cor. of Secs. 12 & 13 N: 219,951.650 USft
 Township 38 North E: 257,556.707 USft
 Range 8 East Datum: NAD 83/91 (ONEIDA91)
 Town of Newbold County of Oneida



(b) HISTORY OF ORIGINAL CORNER ESTABLISHMENT

Original Surveyor: Alexander Anderson Original Accessories:
 Date of Survey: Commenced July 10, 1863 tamarack 6" S9°E, 45 lks.
 Completed July 21, 1863 no other near

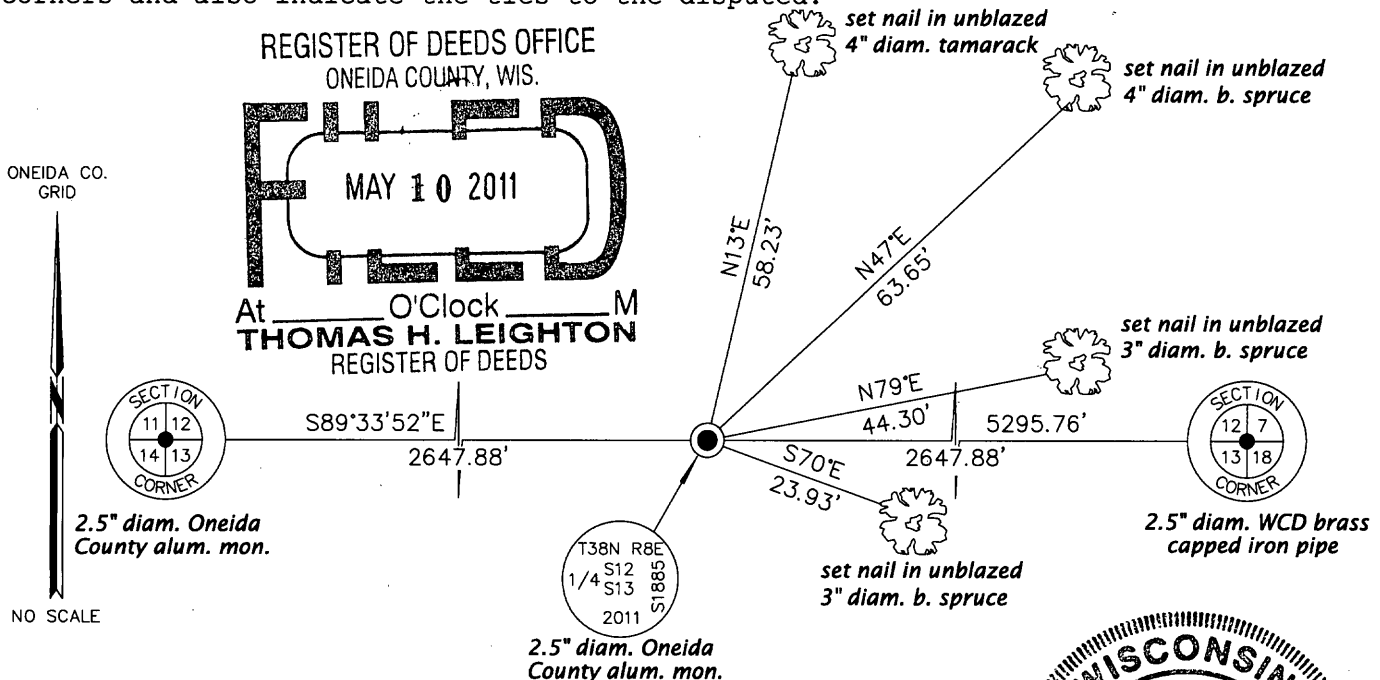
(b) (f) (g) (h) Description of monument found at this corner and if it was accepted, state all evidence (material, testimonial, occupational, plats, records, other monuments) used as a basis for accepting. If not accepted or if nothing was found, state evidence used as basis for establishing location. If re-established through lost corner proportionate methods, indicate all monuments, distances and directions used to establish. Indicate type of monument and sign post found or set.

April 24, 2011: During a thorough search, I found no evidence of the original survey or any subsequent survey. I re-established this corner at the midpoint of a straight line connecting controlling corners as shown below. I set a 60" long, 2.5" diam. aluminum monument with Oneida County aluminum cap projecting 12" above the bog surface. I established accessories as shown below and set a white plastic sign post Northwest, 1 foot.


In the course of this work, ONEIDA91 coordinates were also generated for 3808120000:
 N: 219,931.524 USft
 E: 260,204.513 USft

The coordinates shown were derived from a static GPS control survey based on the published geographic coordinates of Oneida County control station 250S.

(c) (d) (e) Plan view of corner with ties to at least 4 witness monuments. If in disagreement with previously established corner, show the distances between the two corners and also indicate the ties to the disputed.



(i) I, Jeffrey W. Austin, Registered Land Surveyor No. S-1885, hereby certify that the corner location on this record was determined by me or under my direction and control and that this U.S. Public Land Survey Monument Record is correct and complete to the best of my knowledge and belief.

Signature:  Date: May 5, 2011



3808120020 (INDEX NO. J-23)