

U.S. PUBLIC LAND SURVEY MONUMENT RECORD

REGISTER OF DEEDS OFFICE
ONEIDA COUNTY
FILED

MAR 25 2014

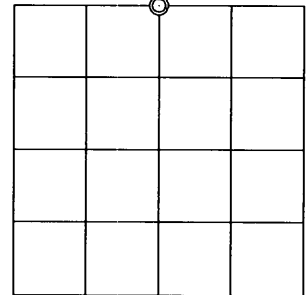
Note: This form is intended and designed to fulfill all requirements of the Wisconsin Administrative Code, Chapter A-E 7.08 U.S. Public Land Monument Record (3)(a)(b)(c)(d)(e)(f)(g)(h)(i). An additional sheet may be added if necessary to conform with said requirements.

(a) CORNER LOCATION: ONEIDA CO. COORDINATES
 North Quarter corner of Section 23 North: 214923.32'
 Township 38 North East: 252135.85'
 Range 8 East Control Station: WISCORS Network
 Town of Newbold Latitude:
 County of Oneida Longitude:
 Datum: NAD 83 (2011)
 Method: Direct RTK GPS

AT _____ O'CLOCK _____ M
 KYLE J. FRANSON
 REGISTER OF DEEDS

(RECORDING AREA)

SECTION 23



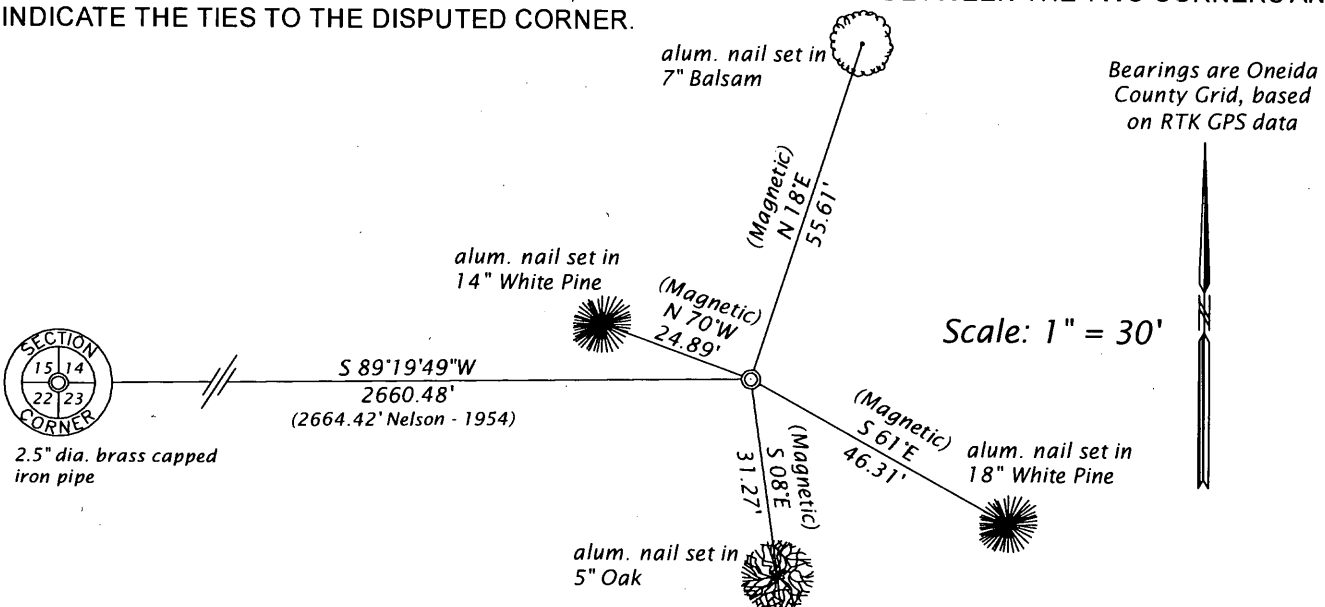
(b) HISTORY OF ORIGINAL CORNER ESTABLISHMENT

Original Surveyor: Alexander Anderson
 Date of Survey: Commenced July 10, 1863
 Completed July 21, 1863
 Original B.T.'S Fir 6", S24°W, 16 lks.
 Birch 5", N32°W, 20 lks.

(f)(g)(h) DESCRIPTION OF MONUMENT FOUND AT THIS CORNER AND IF IT WAS ACCEPTED, STATE ALL EVIDENCE (MATERIAL, TESTIMONIAL, OCCUPATIONAL, PLATS, RECORDS, OTHER MONUMENTS) USED AS A BASIS FOR ESTABLISHING LOCATION. IF NOT ACCEPTED OF IF NOTHING WAS FOUND, STATE EVIDENCE USED AS BASIS FOR ESTABLISHING LOCATION. IF REESTABLISHED THROUGH LOST CORNER PROPORTIONATE METHODS, INDICATE ALL MONUMENTS, DISTANCES AND DIRECTIONS USED TO ESTABLISH. INDICATE TYPE OF MONUMENT AND SIGN POST FOUND OR SET.

November 19, 1897 - B. F. Dorr, Surveyor - Field book #11, page 33 - makes new B.T. at corner location. Y. Pine 20", S54-1/2°E, 38-1/4 lks.
 June 9, 1935 - V. Maine, Oneida County Surveyor - Book II, page 4 - hits B.F. Dorr's 1/4 stk. Old stk. and his B.T. badly burned, Y.P. 20", S54-1/2°E, 38-1/4 lks.
 June 10, 1935 - V. Maine, Oneida County Surveyor - Book II, page 4 - set new cedar stk. Rocks around it. No B.T.'s near.
 February 11, 1954 - Alvin E. Nelson, W.C.D. Surveyor, O.C. Map A379 - found corner by Dorr and Maine.
 December 17, 2013 - James D. Rein, RLS No. S-1234 - found and accepted a 1.75" dia. x 42" long iron pipe at the corner location. We replaced the iron pipe with an Oneida County capped 2.4" dia. x 30" long flange bottom aluminum monument. Set white poly guard post 0.5' North of corner.

(c)(d)(e) PLAN VIEW OF CORNER WITH TIES TO AT LEAST 4 WITNESS MONUMENTS. IF IN DISAGREEMENT WITH PREVIOUSLY ESTABLISHED CORNER, SHOW THE DISTANCE BETWEEN THE TWO CORNERS AND ALSO INDICATE THE TIES TO THE DISPUTED CORNER.



(i) I, JAMES D. REIN, PROFESSIONAL LAND SURVEYOR NO. S-1234 HEREBY CERTIFY THAT THE CORNER LOCATION ON THIS RECORD WAS DETERMINED BY ME OR UNDER MY DIRECTION AND CONTROL AND THAT THIS U.S. PUBLIC LAND SURVEY MONUMENT RECORD IS CORRECT AND COMPLETE TO THE BEST OF MY KNOWLEDGE AND BELIEF.

[Handwritten Signature]
 SIGNATURE

2-13-2014
 DATE



380814 0020

INDEX NO. N 19