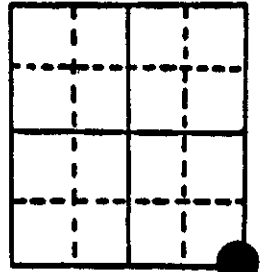


U.S. PUBLIC LAND SURVEY MONUMENT RECORD

Note: This form is intended and designed to fulfill all requirements of Wisconsin Administrative Code, Chapter A-E 5.02, U.S. Public Land Survey Monument Record (3) (a) (b) (c) (d) (e) (f) (g) (h) (i). An additional sheet may be added if necessary to conform with said requirements.

(a) Corner location: Township 38 North
 Range 8 East/West



Town/City/Village Newbold

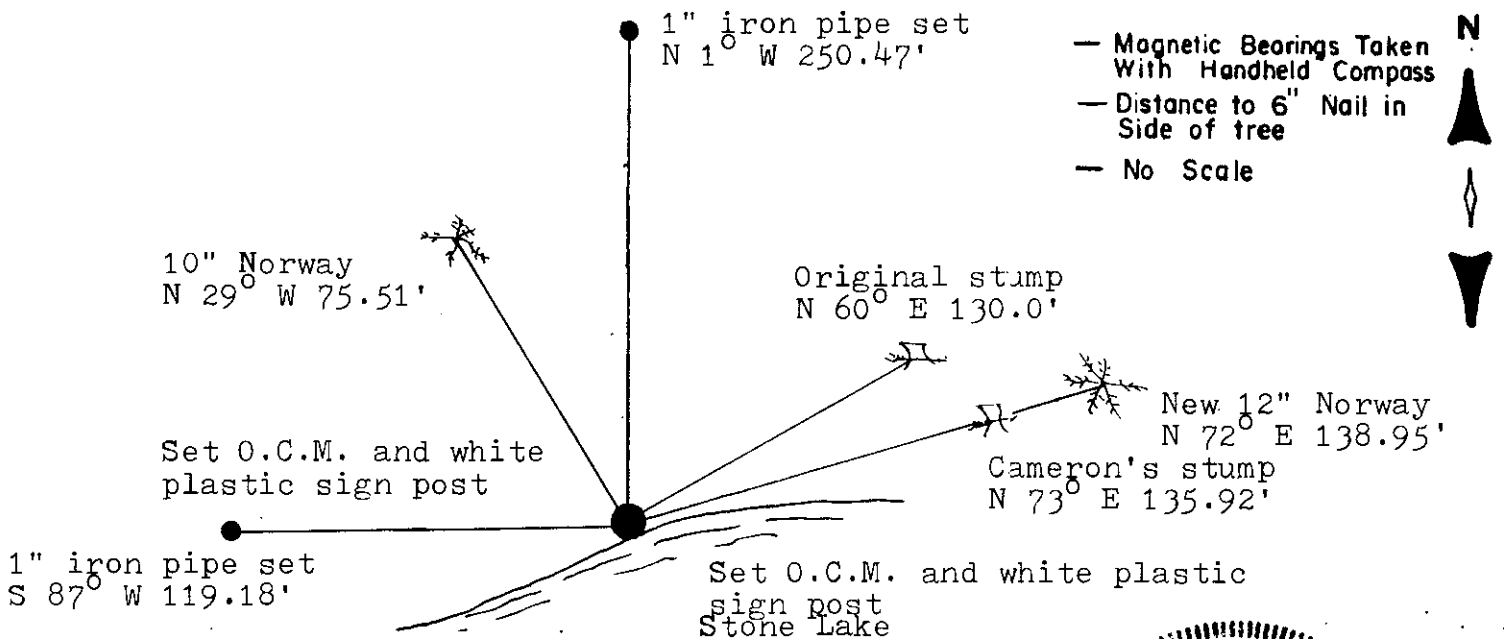
County Oneida

Section 16

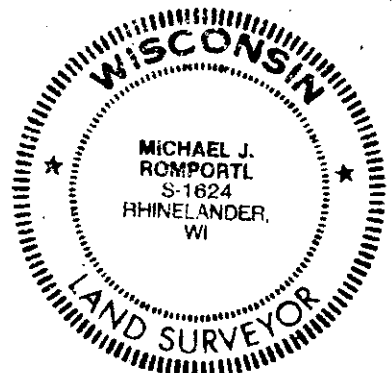
(b) (f) (g) (h) Description of monument found at this corner and if it was accepted, state all evidence (material, testimonial, occupational, plats, records, other monuments) used as a basis for accepting. If not accepted or if nothing was found, state evidence used as basis for establishing location. If reestablished through lost corner proportionate methods, indicate all monuments, distances and directions used to establish.

- 1863 Alexander Anderson established original corner 80.00 over lake and set post Y. Pine 16 N 5 W 167 Y. Pine 12 N 60 E 197.
- 1933 H.C. Hall found old post agreeing with NE original tree, stump of NW measures 1.47 distant as Dorr says. Drive new post from which Y. Pine 10" bears N 34 W 1.35 ch.
- 1952 J. Abernathy found wood post and B.T.s stump 12" N 32 W 74.7, Maple 6" N 28 W 82.5.
- 1963 W. Cameron Found wood post, B.T.s 10" Pine stump N 35 W 75.3, 10" Pine stump N 65 E 135.7', 14" Pine stump N 55 E 129.1.
- 1987 I found a wood post under water agreeing with Halls and Camerons B.T.s. I set a 2" X 5' Oneida County Capped Monument for the corner and witnessed it as shown below.

(c) (d) (e) Plan view of corner with ties to at least 4 witness monuments. If in disagreement with previously established corner, show the distances between the two corners and also indicate the ties to the disputed corner.



(i) I, Michael J. Romportl
 (type or print name) certify that the corner location on this record was determined by me or under my direction and control and that this U.S. Public Land Survey Monument Record is correct and complete to the best of my knowledge and belief.



Index No. N-15

Michael J. Romportl 4-4-87
 Signature Date
 GENISOT & ASSOCIATES INC.
 1512 EAGLE ST., RHINELANDER, WIS.

3808160000