

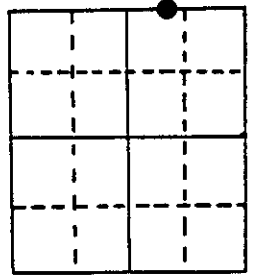
U.S. PUBLIC LAND SURVEY MONUMENT RECORD

Note: This form is intended and designed to fulfill all requirements of Wisconsin Administrative Code, Chapter A-E 5.02, U.S. Public Land Survey Monument Record (3) (a) (b) (c) (d) (e) (f) (g) (h) (i). An additional sheet may be added if necessary to conform with said requirements.

(a) Corner location: Township 38 North
 Range 8 East/West

Town/City/Village NEWBOLD
ONEIDA

County _____

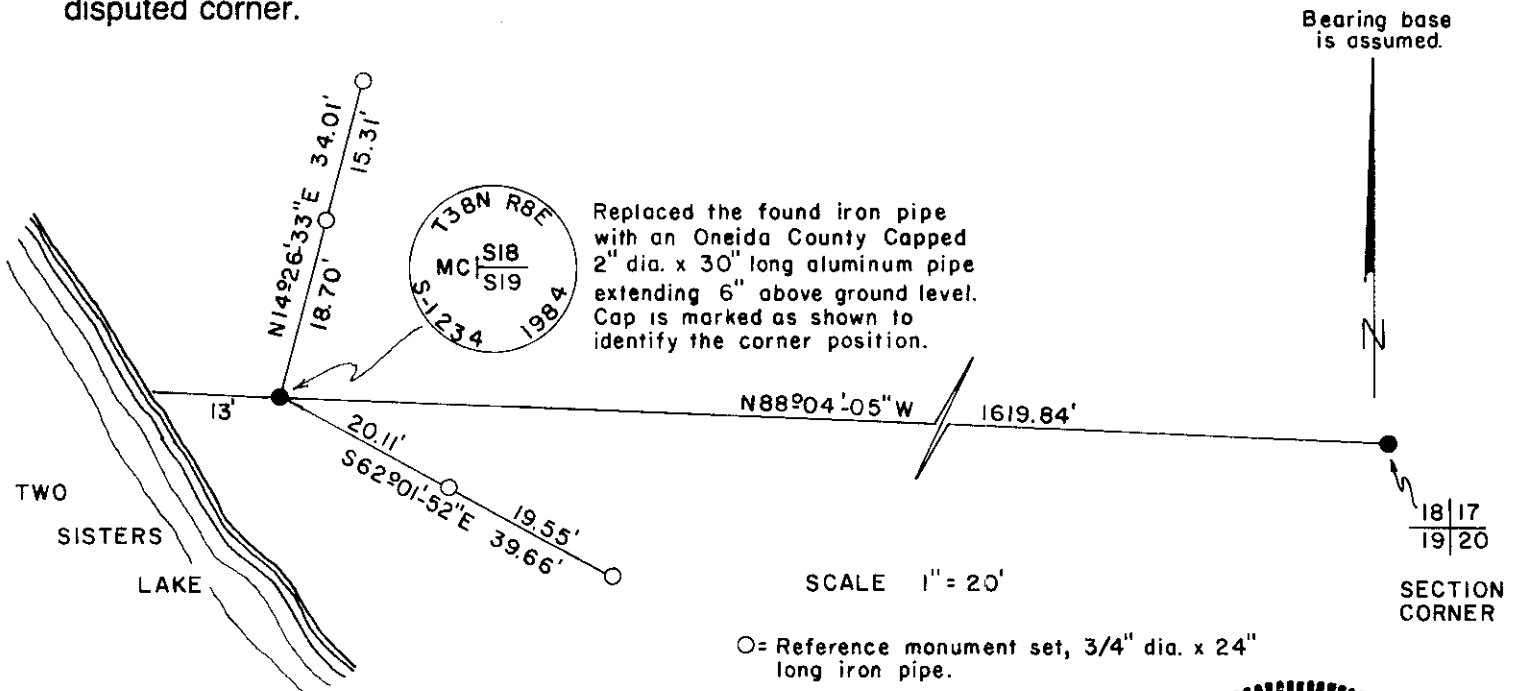


Section 19

(b) (f) (g) (h) Description of monument found at this corner and if it was accepted, state all evidence (material, testimonial, occupational, plats, records, other monuments) used as a basis for accepting. If not accepted or if nothing was found, state evidence used as basis for establishing location. If reestablished through lost corner proportionate methods, indicate all monuments, distances and directions used to establish.

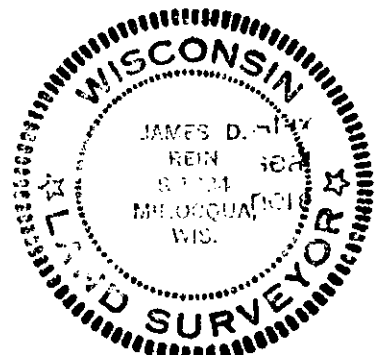
July, 1863- Alexander Anderson, Deputy Surveyor - Set original Meander Corner.
 Original bearing trees: Y. Pine 20" N7°E, 13 links; Y. Pine 20" S64°E, 12 links.
 Oct. 9, 1984- I found a 1-1/2" diameter iron pipe in place which is in harmonious position with deeds for the adjoining properties as recorded in Vol. 175 Deeds, pages 74-76 and Vol. 179 Deeds, page 396. Said deeds call for an iron pipe marking the "original meander corner set back from the waters edge."
 I accept the iron pipe as the best evidence of the original corner position.

(c) (d) (e) Plan view of corner with ties to at least 4 witness monuments. If in disagreement with previously established corner, show the distances between the two corners and also indicate the ties to the disputed corner.



(i) I, JAMES D. REIN, Reg. Land Surveyor No. S-1234
 (type or print name) certify that the corner location on this record was determined by me or under my direction and control and that this U.S. Public Land Survey Monument Record is correct and complete to the best of my knowledge and belief.

Signature James D Rein Date November 9, 1984



Index No. N-4

3808180013