

# U. S. PUBLIC LAND SURVEY MONUMENT RECORD

**INSTRUCTIONS:** This record shall show the location of the corner and shall include all of the following nine elements (a through i).

(a) Identify the corner by reference to the U.S. public land survey system.

● = Corner monument restored.

South 1/4 corner of Section 19, T. 38 N. R. 8 E., Oneida County, Wisconsin

Original corner was set in 1860's at 34.54 chains corrected east

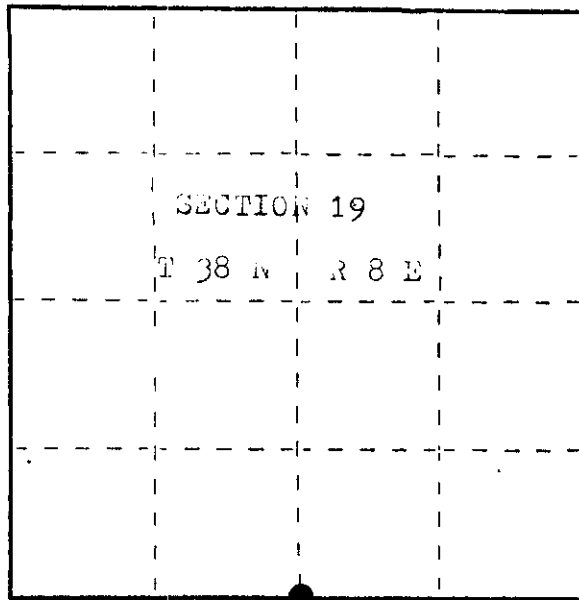
bearing trees

Aspen 12 S 27 W 13  
do 12 N 34 W 27

No original evidence was recovered.

Compared with all record data and accepted as correct.

Robert H. Knaul 1872/1884  
Oneida County Surveyor date



(b) Describe any record evidence, monument evidence, occupational evidence, testimonial evidence or any other material evidence you considered, and whether the monument was found or placed.

Sept. 1, 1924 L.P. Belishek Eng. Co. shows iron pipe at corner bt's.  
N. Pine 6 N 6 W 40' ; N. Pine 7 N 11 E 40 1/2'

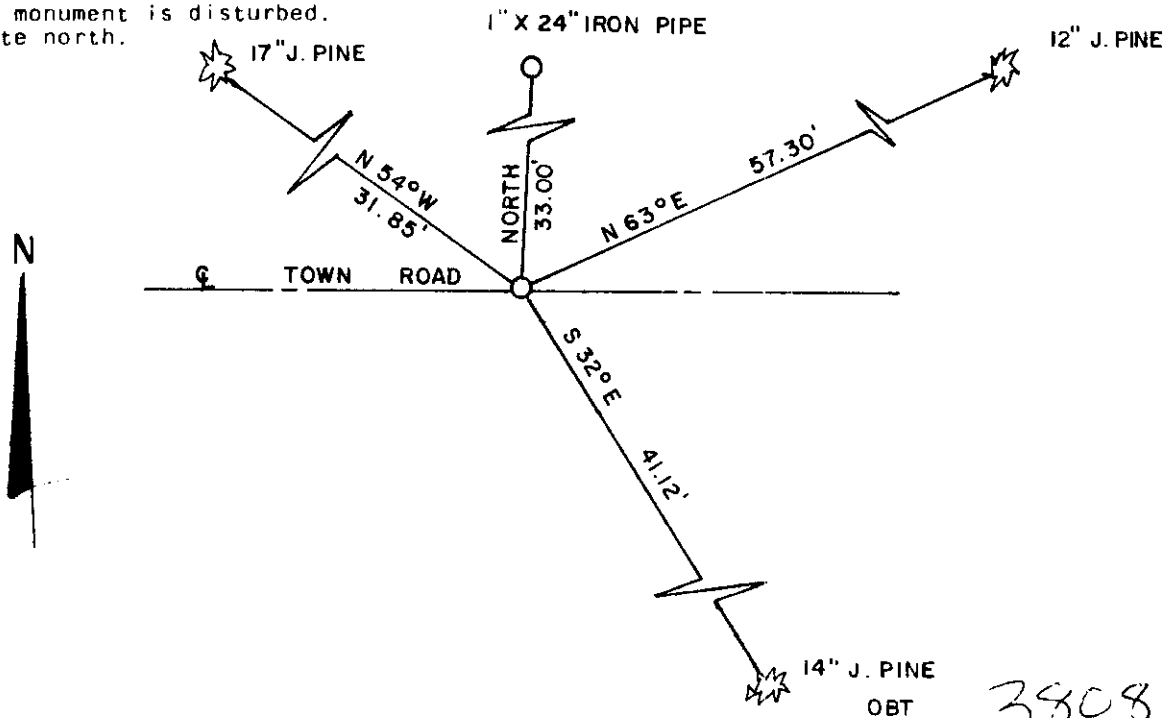
Oct. 29, 1962 F.R. Wincentzen, shows iron pipe at corner

July 10, 1969 John Fisher shows 1" iron pipe at corner bts, J. Pine 7  
S 45 W 49.9 ; J. Pine 11 S 24 E 40.6

August 24, 1983, I found a 1" iron pipe even with the road surface, found Fisher's Southeast bearing tree., corner fits previous measurements to east and west. Pipe in good condition, did not remonument.

(c) In the plan view drawing below, provide reference ties to at least 4 witness monuments, or, if the location is within a municipality, to at least 2 witness monuments. (Witness monuments shall be made of concrete, natural stone, iron or other equally durable material.) Describe witness monuments.

(d) Show a plan view drawing depicting the relevant monuments and reference ties which is sufficient in detail to enable accurate relocation of the corner monument if the corner monument is disturbed. Indicate north.



R-3

3808190020

(e) Describe any material discrepancy between the location of the corner as restored or reestablished and the location of that corner as previously restored or reestablished by distance and direction. Show the discrepancy on the plan view drawing under (d), above. Show the distances between the corner as previously restored or reestablished and (1) the corner as restored or reestablished, and (2) to at least 2 of the witness monuments shown on the drawing in (d), above.

none

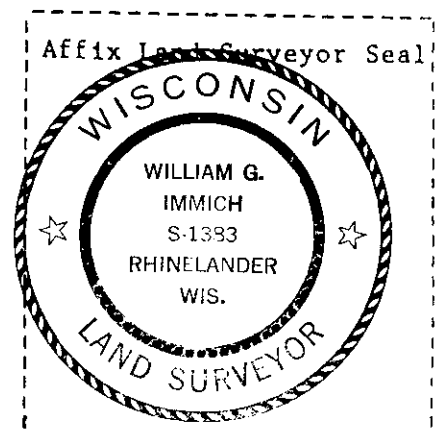
(f) Was the corner restored through acceptance of (1) an obliterated evidence location, or, (2) a found perpetuated location?

A found perpetuated corner.

(g&h) Was the corner reestablished through lost corner proportionate methods? If so, show the method, including the directions and distances to other public land survey corners used as evidence or used for proportioning in determining the corner location?

REGISTRAR'S OFFICE )  
Oneida County, Wis. )

Received for Record the 18<sup>th</sup> day of  
January A.D. 1984 at  
10<sup>00</sup> o'clock A M. and recorded in  
Vol. \_\_\_\_\_ on page \_\_\_\_\_  
Loris Verage Kuehn  
Registrar



(1) I, William Immich  
(type or print name) certify that the corner location shown on this record was determined by me or under my direction and control and that this U.S. Public Land Survey Monument Record is correct and complete to the best of my knowledge and belief.

William Immich  
Signature

December 13, 1983  
Date