

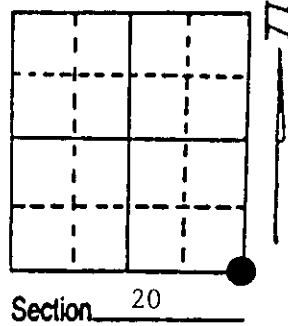
# U.S. PUBLIC LAND SURVEY MONUMENT RECORD

**Note:** This form is intended and designed to fulfill all requirements of Wisconsin Administrative Code, Chapter A-E 7.08 U.S. Public Land Survey Monument Record (3) (a) (b) (c) (d) (e) (f) (g) (h) (i). An additional sheet may be added if necessary to conform with said requirements.

(a) Corner location: Township 38 North  
 Range 8 East/West

Town/City/Village Newbold

County Oneida



(b) (f) (g) (h) Description of monument found at this corner and if it was accepted, state all evidence (material, testimonial, occupational, plats, records, other monuments) used as a basis for accepting. If not accepted or if nothing was found, state evidence used as basis for establishing location. If reestablished through lost corner proportionate methods, indicate all monuments, distances and directions used to establish. Indicate type of monument found or set and sign post.

1863 - Alexander Anderson established this corner and set a wood post with two BTs:  
 12" Birch, N18°W, 18 Links      10" Maple, S30°E, 5 Links

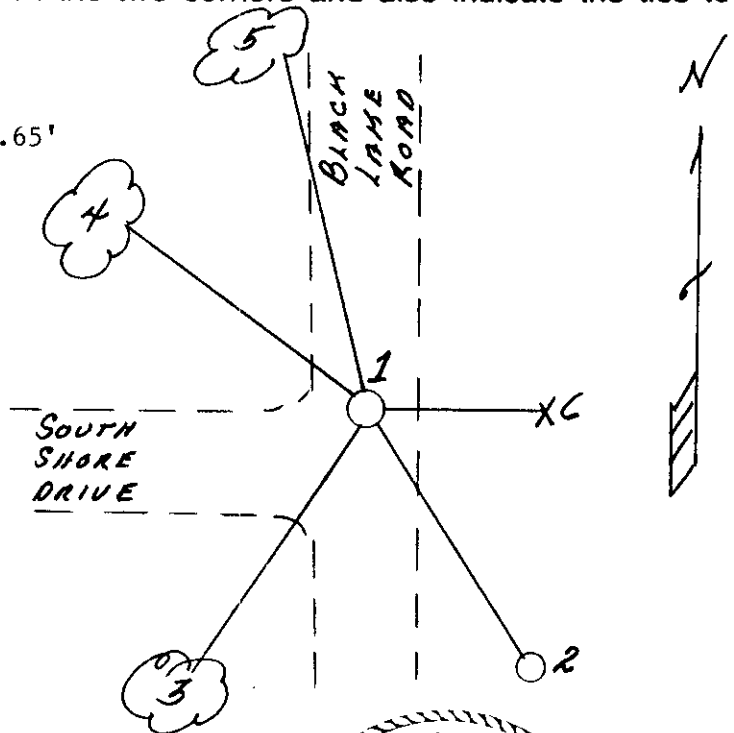
1903 & 04 - Vaughan restored corner as he found it destroyed. He set an iron pipe (bent over) in center of N-S Road.

6/18/1991 - Milo E. Stefan found 3/4" x 12" iron pipe 6" below road surface. Distances to Quarter Corner Northerly and North Sixteenth to Sections 28 and 29 fit very well for proper position of this iron pipe. I accept his iron pipe as the restored and perpetuated Section Corner and place an aluminum monument in place of the iron pipe. Made new BTs and set plastic sign post.

(c) (d) (e) Plan view of corner with ties to at least 4 witness monuments. If in disagreement with previously established corner, show the distances between the two corners and also indicate the ties to the disputed corner.

- 1) 2" x 30" aluminum monument below road surface
- 2) 8" power pole #3808-28W12, S30°E, 47.65'
- 3) 12" White Pine, S25°W, 156.80'
- 4) 14" Red Oak, N58°W, 74.46'
- 5) 10" Red Oak, N26°W, 89.59'
- 6) Plastic sign post, East, 20.7'

Distances to nail in side of BTs.  
 "BT" scribed in stump blaze.



(i) I, Milo E. Stefan  
 (type or print name) certify that the corner location on this record was determined by me or under my direction and control and that this U.S. Public Land Survey Monument Record is correct and complete to the best of my knowledge and belief.

Milo E. Stefan  
 Signature

October 14, 1991  
 Date



Stamp 3808200000

Index No. R-9