

U.S. PUBLIC LAND SURVEY MONUMENT RECORD

This form is intended and designed to fulfill all requirements of Wisconsin Administrative Code, Chapter A-E 7.08 U.S. Public Land Survey Monument Record (3) (a)(b)(c)(d)(e)(f)(g)(h)(i).

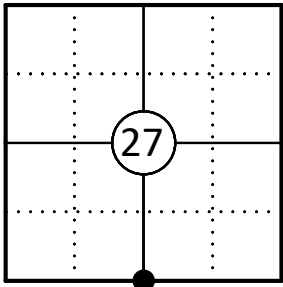
The coordinate value shown has been verified by at least one of the following methods: 1) Comparison to a previously GNSS determined published value; 2) The value is the average of two or more GNSS observations at a markedly different time; 3) One or more distances were measured back to the GNSS observed corner from temporary GNSS observed offset locations.

Oneida County  
Land Information Office  
Filed  
8/11/2025

A-E 7.08(3)(a) Identity of the corner:

S 1/4 Corner Section 27	WISCRS - Oneida County
Township 38 North	N: 204389.33 USFT
Range 8 East	E: 247185.28 USFT
Town of Newbold	Datum: NAD 83 (2011)
County of Oneida	GNSS Method: WISCRS VRS Direct Observation

Corner ID: 3808270020



Original Corner Information:

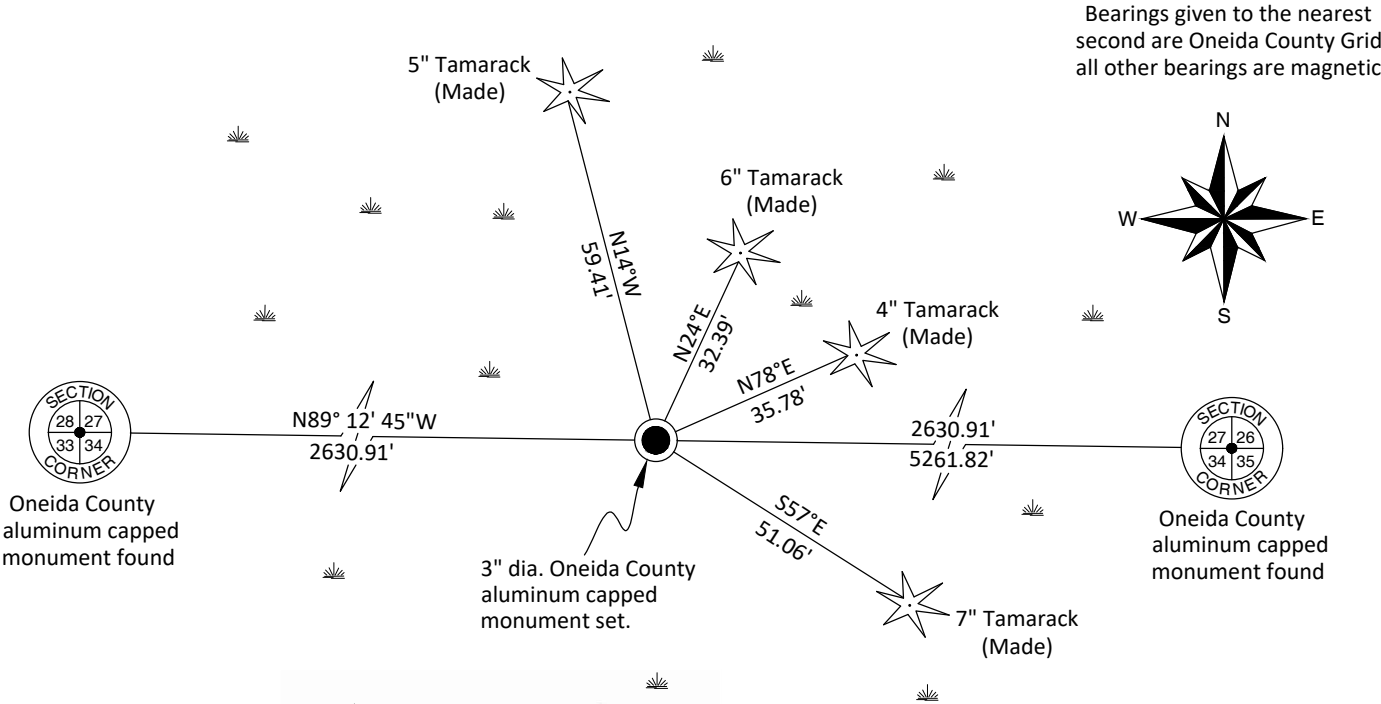
Original Surveyor: Alexander Anderson    Original B.T.'s: Tamarack 8" - N60°E, 23 links  
Date of Survey: July, 1863                      Tamarack 5" - S75°E, 5 links

A-E 7.08(3)(b)(e)(f)(g) Describe any record evidence, monument evidence, occupational evidence, testimonial evidence or any other material evidence considered. Describe any discrepancy between the corner restored and any previously established location. State whether the corners was restored through acceptance of obliterated evidence, a found perpetuated location, or determined by proportionate methods.

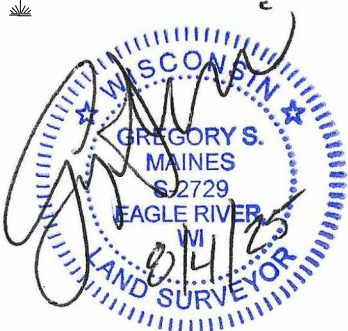
01/20/1906    D.H. Vaughan runs from S 1/4 corner of Section 34 north to N 1/4 corner of Section 34 and finds both original bearing trees.

09/05/2024    We found no subsequent surveys where anyone found or showed the south quarter corner of Section 27. I searched for and found no remaining evidence of the original corner or bearing trees. We positioned the corner by single proportion online and midway between the southeast and southwest corners of Section 27 and set a 3" dia. Oneida County aluminum capped monument stamped to identify the corner and made four new bearing trees to witness the corner as shown below. The corner falls in a wet swamp. We did also find an unstamped Oneida County aluminum monument laying flat in the swamp next to where we set the corner.

A-E 7.08(3)(c)(d)(e)(h) Plan view of corner with ties to at least four witnesses. If in disagreement with previously established corner, show the distances between the two corners and also indicate the tie to the disputed corner. Distances and directions to other PLSS used as evidence or for proportioning.



\* Distances to bearing trees are to nail in side tree.  
\* Sketch is not to scale



A-E 7.08(3)(i) - Certification  
I, Gregory S. Maines, Professional Land Surveyor No. 2729, hereby certify that the corner location on this record was referenced by me or under my direction and control and that this U.S. Public Land Survey Monument Record is complete to the best of my knowledge and belief.  
REF: 2024243