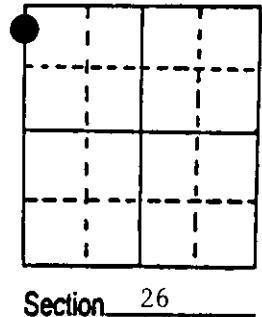


# U.S. PUBLIC LAND SURVEY MONUMENT RECORD

Note: This form is intended and designed to fulfill all requirements of Wisconsin Administrative Code, Chapter A-E 7.08 U.S. Public Land Survey Monument Record (3) (a) (b) (c) (d) (e) (f) (g) (h) (i). An additional sheet may be added if necessary to conform with said requirements.

(a) Corner location: Township 38 North  
 Range 8 East/West  
 Town/City/Village Newbold  
 County Oneida



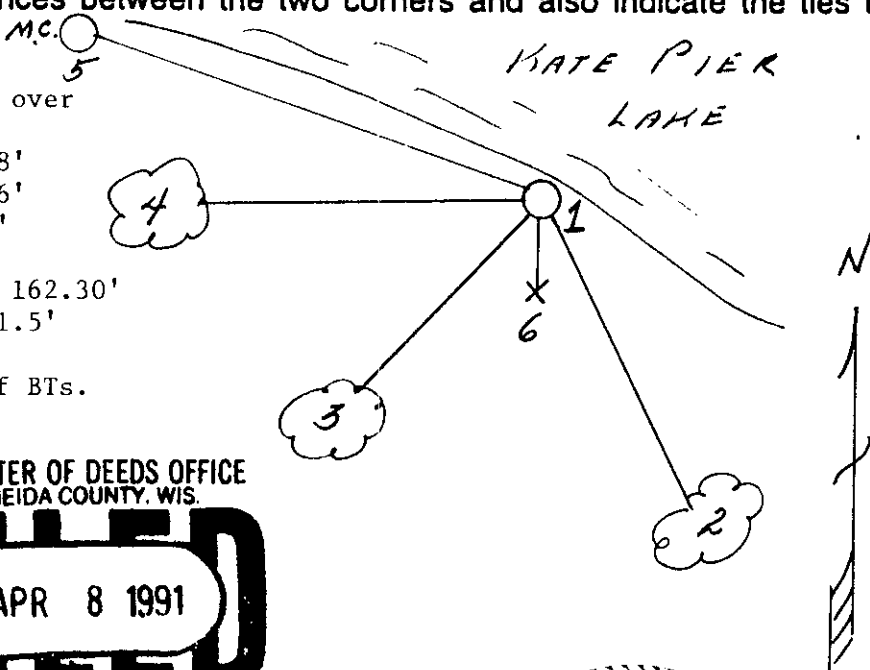
(b) (f) (g) (h) Description of monument found at this corner and if it was accepted, state all evidence (material, testimonial, occupational, plats, records, other monuments) used as a basis for accepting. If not accepted or if nothing was found, state evidence used as basis for establishing location. If reestablished through lost corner proportionate methods, indicate all monuments, distances and directions used to establish. Indicate type of monument found or set and sign post.

- 1863 - Alexander Anderson established this Meander Corner at 78.67 chains on south shore of lake, set a wood post for M.C. and two BTs:  
 12" W. Pine, S20°E, 47 Links          12" W. Pine, S35°W, 27 Links
- 1950's - DNR (Nelson, McDonald & Mentz) found evidence of original corner and set a 1" x 48" iron pipe while working Section 23.
- 1978 - William Immich found DNR's iron pipe and used it to work Government Lot #1, Section 27.
- 3/28/1991 - Milo E. Stefan found 1" x 48" iron pipe 8" above water line with both original Pine BT stumps in place. I placed a 2" x 36" aluminum monument over iron pipe, made new BTs and set plastic sign post.

(c) (d) (e) Plan view of corner with ties to at least 4 witness monuments. If in disagreement with previously established corner, show the distances between the two corners and also indicate the ties to the disputed corner.

- 1) 2" x 36" aluminum monument over 1" x 48" iron pipe
- 2) 5" White Pine, S12°E, 52.78'
- 3) 4" White Pine, S32°W, 17.86'
- 4) 10" Red Maple, West, 35.60'
- 5) M.C. on West shore between Sections 22 and 27, N48°W, 162.30'
- 6) Plastic sign post, South, 1.5'

Distance to nail in side of BTs.  
 Stump blaze scribed "BT".



REGISTER OF DEEDS OFFICE  
 ONEIDA COUNTY, WIS.  
**FILED**  
 APR 8 1991  
 At \_\_\_\_\_ O'Clock \_\_\_\_\_ M  
**THOMAS H. LEIGHTON**  
 REGISTER OF DEEDS



(i) I, Milo E. Stefan  
 (type or print name) certify that the corner location on this record was determined by me or under my direction and control and that this U.S. Public Land Survey Monument Record is correct and complete to the best of my knowledge and belief.

Milo E. Stefan          April 3, 1991  
 Signature          Date

3808 273600  
 Stamp

Index No. R-S-17.