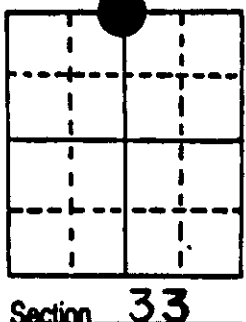


# U.S. PUBLIC LAND SURVEY MONUMENT RECORD

**Note:** This form is intended and designed to fulfill all requirements of Wisconsin Administrative Code, Chapter A-E 5.02, U.S. Public Land Survey Monument Record (3) (a) (b) (c) (d) (e) (f) (g) (h) (i). An additional sheet may be added if necessary to conform with said requirements.

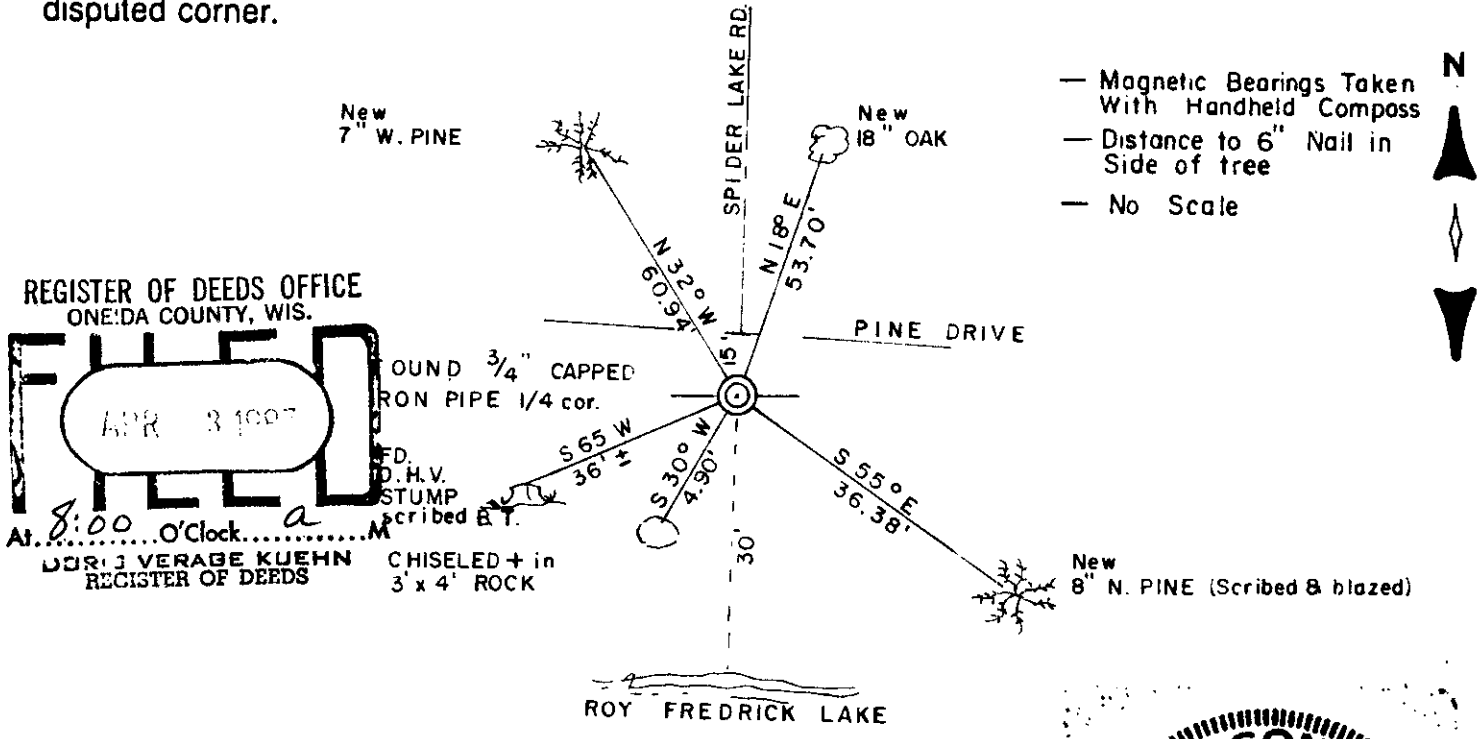
(a) Corner location: Township 38 North  
 Range 8 East  
 Town/City/Village NEW BOLD  
 County ONEIDA



(b) (f) (g) (h) Description of monument found at this corner and if it was accepted, state all evidence (material, testimonial, occupational, plats, records, other monuments) used as a basis for accepting. If not accepted or if nothing was found, state evidence used as basis for establishing location. If reestablished through lost corner proportionate methods, indicate all monuments, distances and directions used to establish.

- 1863 Alexander Anderson established original corner between 28-33 @ 40.35ch. from section corners. B.T.s Birch 6 S14W 9lks.; Birch 6 N9W 17lks.
- 1904 D.H. Vaughan corrects line west for road.
- 1906 " " runs north from corner, sets center @ 2623'
- 1921 " " states N 1/4 corner found it down relocated it as near as possible and made new B.T. W Pine 8 S 65W 53
- 1973 L. Schmit found capped iron pipe & W.Pine B.T. sw of corner
- 1978 W. Immich found capped iron pipe in place
- 1986 I found the 3/4" capped iron pipe in place and the B.T. stump which appears to be Vaughans on the south side of Pine Drive. I accepted the capped pipe as being the corner and witnessed it as shown below.

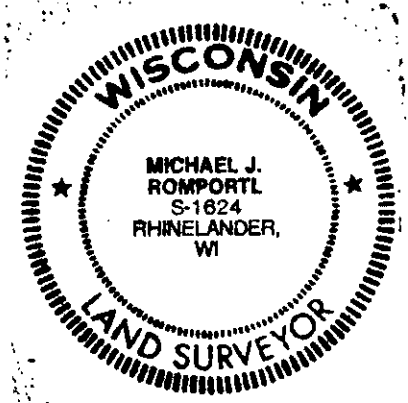
(c) (d) (e) Plan view of corner with ties to at least 4 witness monuments. If in disagreement with previously established corner, show the distances between the two corners and also indicate the ties to the disputed corner.



(i) I, MICHAEL J. ROMPORTL R.L.S. 1624  
 (type or print name) certify that the corner location on this record was determined by me or under my direction and control and that this U.S. Public Land Survey Monument Record is correct and complete to the best of my knowledge and belief.

Michael J. Romportl May 13, 1986  
 Signature Date

GENISOT & ASSOCIATES INC.  
 1512 EAGLE ST., RHINELANDER, WIS.

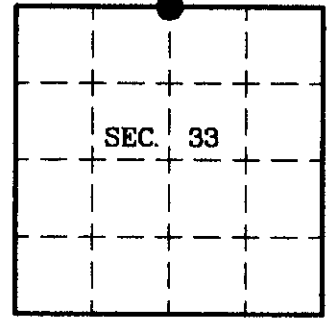


3808280020

# U.S. PUBLIC LAND SURVEY MONUMENT RECORD

Note: This form is intended and designed to fulfill all requirements of Wisconsin Administrative Code, Chapter A-E 7.08 U.S. Public Land Survey Monument Record (3)(a)(b)(c)(d)(e)(f)(g)(h)(i). An additional sheet may be added if necessary to conform with said requirements.

(a) CORNER LOCATION: State Plane Coordinates  
 North 1/4 Corner of Section 33 X  
 Township 38 North Y  
 Range 8 East Datum Base  
 Town of Newbold County of Oneida



(b) HISTORY OF ORIGINAL CORNER ESTABLISHMENT

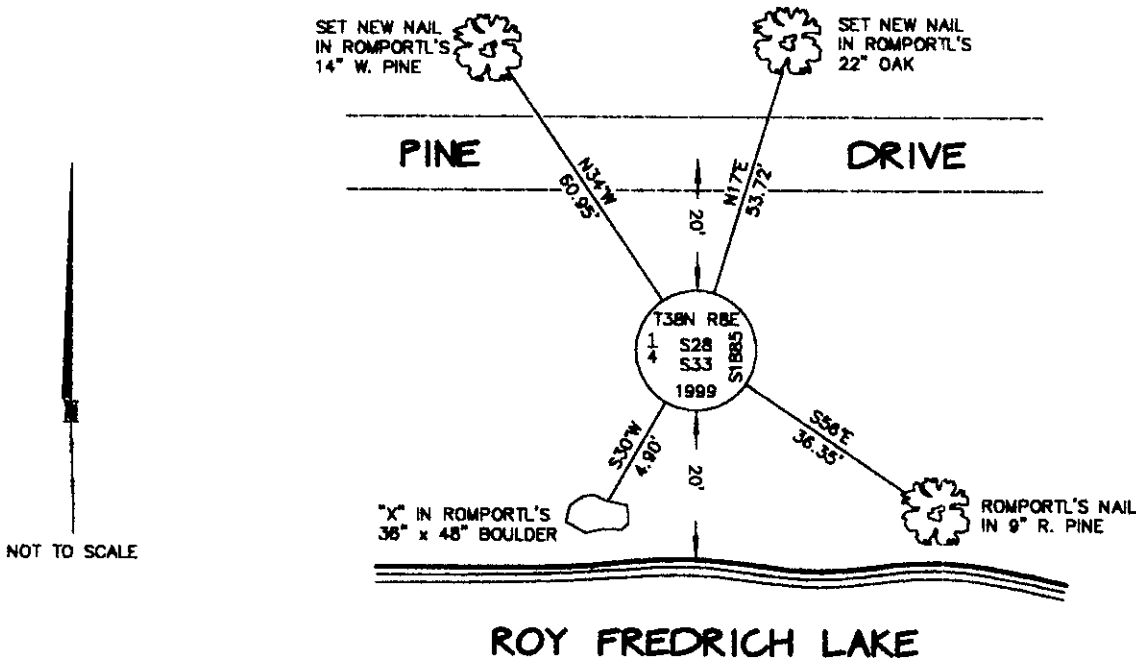
Original Surveyor: Alexander Anderson Original B.T.s  
 Date of Survey: Commenced 1863  
 Completed 1863 Birch 6 S14°W, 9 links  
 Birch 6 N9°W, 17 links

(b)(f)(g)(h) Description of monument found at this corner and if it was accepted, state all evidence (material, testimonial, occupational, plats, records, other monuments) used as a basis for accepting. If not accepted or if nothing was found, state evidence used as basis for establishing location. If reestablished through lost corner proportionate methods, indicate all monuments, distances and directions used to establish. Indicate type of monument and sign post found or set.

This corner was previously restored by Michael J. Romportl, Registered Land Surveyor #S-1624 on May 13, 1986. The complete history of this corner can be found on his U.S. Public Land Survey Monument Record.

August 31, 1999; I found and accepted a badly bent 1" dia., 48" long iron pipe with aluminum cap. I replaced the pipe with a 2-1/2" dia., 30" long aluminum pipe with 3-1/4" dia. Oneida Co. aluminum cap flush with the ground and marked as shown below. I established accessories as shown below and set a plastic sign post Southwest, 2 feet.

(c)(d)(e) Plan view of corner with ties to at least 4 witness monuments. If in disagreement with previously established corner, show the distances between the two corners and also indicate the ties to the disputed.



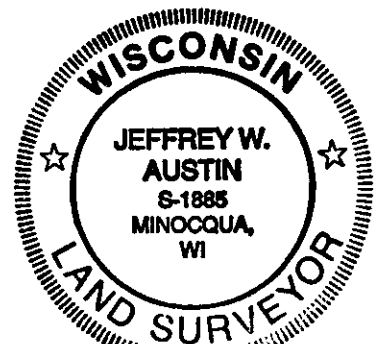
NOT TO SCALE

(i) I, Jeffrey W. Austin, Registered Land Surveyor S-1885, hereby certify that the corner location on this record was determined by me or under my direction and control and that this U.S. Public Land Survey Monument Record is correct and complete to the best of my knowledge and belief.

Signature

Date

1-26-2000



INDEX NO. V-11

3808200020