

This form is intended to fulfill the requirements of Chapter A-E 7.08 (3)(a) thru (i) U.S. Public Land Survey Monument Location Record, Wisconsin Administrative Code. Use the reverse side of form for continuation.

**U.S. PUBLIC LAND SURVEY MONUMENT LOCATION RECORD**

USPLS CORNER: WEST 1/4 CORNER SECTION: 29 TOWNSHIP: 38 NORTH RANGE: 8 EAST

NAME OF WATERWAY FOR M.C. CORNER : N/A SECTION LINE: N/A

~~(CITY)(VILLAGE)~~(TOWN) OF: NEWBOLD COUNTY OF: ONEIDA

Description of monument found or placed and all other evidence used as the basis for monument location; including monuments and related measurements required if the corner location was reestablished by lost corner proportionate methods. Also indicate name of original surveyor, original survey date and the corner monument, bearing trees, witness or other reference monuments established; including measured bearing and distance ties, from available records.

THIS CORNER WAS REESTABLISHED WITH PRIOR VERBAL APPROVAL OF ONEIDA COUNTY SURVEYOR MICHAEL J. ROMPORTL, AS NO EVIDENCE OF A CORNER MONUMENT OR REFERENCES COULD BE FOUND THIS DATE. In July 1863, Alexander Anderson/GLO set a wood post as the original corner and marked OBTs: an 8" Tamarack S26°E 26 links and a 7" Tamarack N60°W 36 links; all now obliterated within existing roadway corridor.

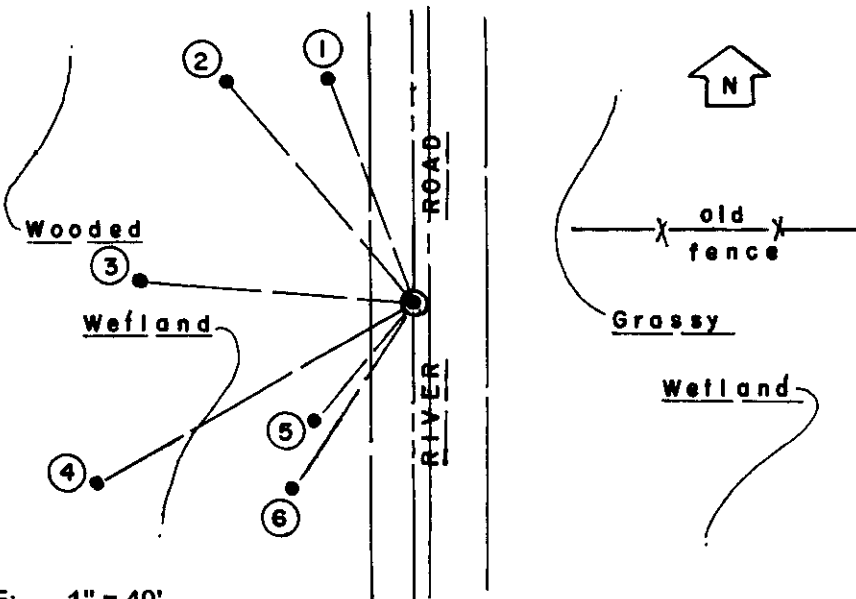
In 1910, D.H. Vaughan notes he found a wood post at this corner that he had previously set from GLO BTs found but now gone; no new BTs were noted.

In October 1962, F.R. Wincentsen/RLS 155 notes an iron pipe in road at this corner per his section subdivision notes for Section 30, Township 38 North, Range 8 East on Pages 196 & 197 of Wincentsens Book 1 filed in Oneida County survey records; iron pipe is now gone per MLR detection effort within roadway area and no older BTs were found nearby.

I therefore reestablished this corner by proportional measurements on a right line between the NW & SW corners of Section 29 found OK this date, per traverse data sketch on reverse side of this form, and set a 5/8" dia. by 24" long rebar with uncapped top 6" below existing gravel road surface and measured new ties to 6 BTs westerly of the corner as a large bog-marsh area exists easterly; iron rebar reference monuments were not set on a right line thru the corner as they would be very unstable in adjoining wetland conditions.

This recovery completed October 1, 2002; there were no direct witnesses except for a few vehicle drive-bys.

Plan view map of monument location with bearing and distance ties to a minimum of four(4) described witness or reference monuments of concrete, natural stone, iron, live bearing trees or equivalent material. If applicable, also show a minimum of two(2) bearing and distance ties to any other monument found and not accepted; including the bearing and distance from the accepted monument.



**WITNESS MONUMENT TIES:**

- ① New 10" Pr BT N20°W 49.52'.
- ② New 13" Pj BT N40°W 60.54'.
- ③ New 9" Sb BT N85°W 57.18'.
- ④ New 11" Sb BT S60°W 75.66'.
- ⑤ New 7" Pw BT S40°W 31.65'.
- ⑥ New BT 5" Pr BT S33°W 45.68'.

An old fenceline leads East thru large bog-marsh area 15' North of corner.

I set a standard white poly 'T' marker post 18.5' West of the corner.

SCALE: 1" = 40'

Unless otherwise indicated, all bearing tree ties are to a .25" dia. by 2.5" long PK nail with a 1.25" dia. steel washer driven into unblazed right face and a .25" dia. by 2.5" long PK nail with a 2" dia. steel washer stamped BT is also driven into unblazed face of bearing tree at DBH; the basis for measured bearings is by compass to nearest degree and all tie distances are measured horizontal by steel tape corrected to nearest 1/100th feet at standard temperature of 68° F.

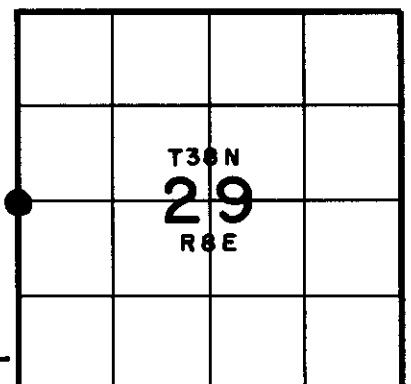
**RLS SEAL:**



**LAND SURVEYOR CERTIFICATE:**

I, William C. Rohde, hereby certify that I am duly licensed as a Professional Land Surveyor in the State of Wisconsin; that this USPLS monument location was determined by me and/or under my direct supervision and control; and that this U.S. Public Land Survey Monument Location Record is true and correct to the best of my knowledge and belief.

Signed: *William C. Rohde*  
William C. Rohde RLS 841



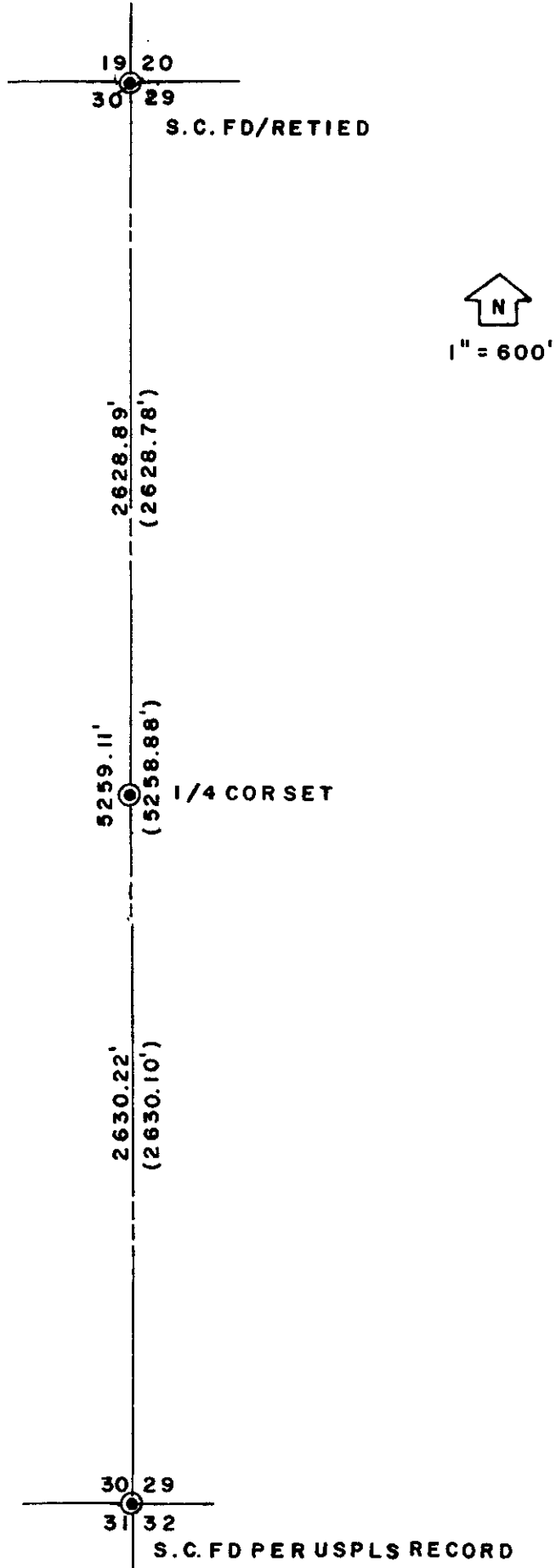
SECTION LOCATION MAP  
INDEX NO. T 5

Date Signed: March 1, 2003

3808 3020 00



Stock No. 26273



NOTES:

TRAVERSE DATA BY TOPCON  
TOTAL STATION.

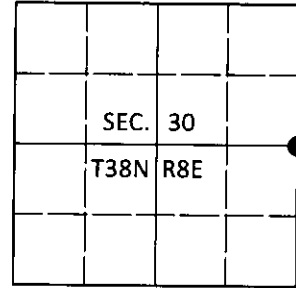
PRIOR RECORD DATA IN ( ).

# U.S. PUBLIC LAND SURVEY MONUMENT RECORD

Note: This form is intended and designed to fulfill all requirements of Wisconsin Administrative Code, Chapter A-E 7.08 U.S. Public Land Survey Monument Record (3)(a-i).

(a) CORNER LOCATION  
 1/4 Cor. of Secs. 29 & 30  
 Township 38 North  
 Range 8 East of the 4th P.M.  
 Town of Newbold  
 County of Oneida

WISCORS - Oneida County  
 N: 206,844.63 USft  
 E: 233,756.78 USft  
 Datum: NAD 83(2011)  
 GNSS Method: RTN - Direct  
 GNSS Control: WISCORS VRS



(b) HISTORY OF ORIGINAL CORNER ESTABLISHMENT

Original Surveyor:

Original Accessories:

Date of Survey

Commenced:  
Completed:

See previous USPLS Monument Record

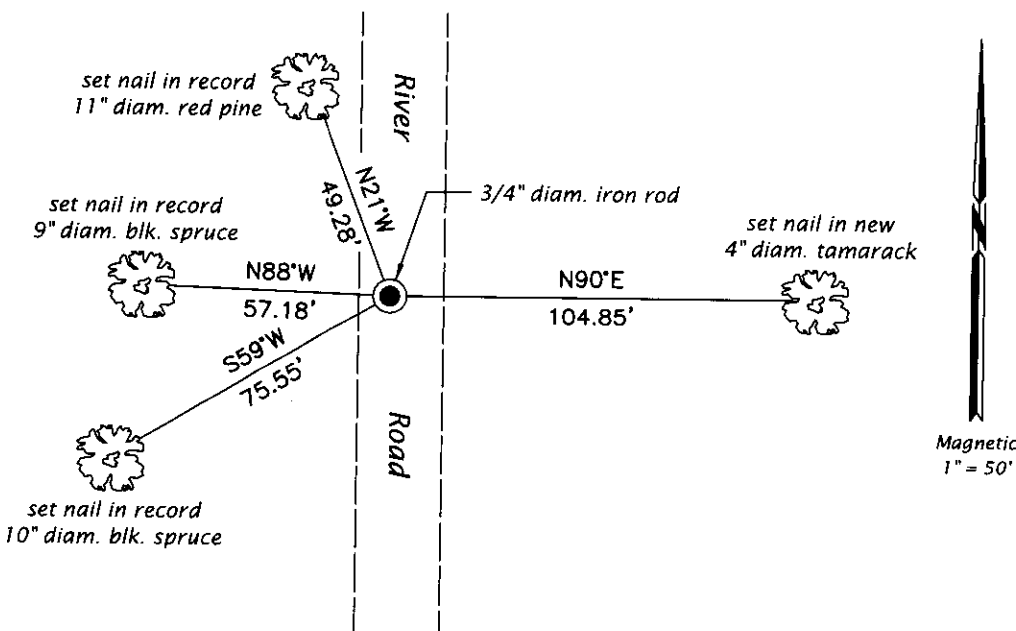
(b)(f)(g)(h) Description of monument found at this corner and if it was accepted, state all evidence (material, testimonial, occupational, plats, records, other monuments) used as a basis for accepting. If not accepted or if nothing was found, state evidence used as basis for establishing location. If re-established through lost corner proportionate methods, indicate all monuments, distances and directions used to establish. Indicate type of monument and sign post found or set.

*This is a perpetuation of a previous USPLS Monument Record by William C. Rohde, RLS dated March 1, 2003 and filed in the office of the Oneida County Register of Deeds. A complete history of the corner can be found on the previous monument record. I accept the previous location as a true and faithful perpetuation or reestablishment of the original corner location and further perpetuate it as follows.*

*August 29, 2018: I found and accepted the record monument, a 3/4" diam. iron rod buried 8" beneath and 3 ft. West of the road centerline. The record bearing tree at N40°W is standing dead. The record bearing trees at S40°W and S33°W are gone. I found or established accessories as shown below. I found a white vinyl sign post bearing S86°W, 18.5 ft.*

*The coordinate value shown has been verified by at least one of the following methods: 1) comparison to a previously GPS determined published value; 2) the value is the average of two or more GPS observations at a markedly different time; 3) one or more distances were measured back to the GPS observed corner from temporary GPS observed offset locations.*

(c)(d)(e) Plan view of corner with ties to at least 4 witness monuments. If in disagreement with previously established corner, show the distances between the two corners and also indicate the ties to the disputed.



REGISTER OF DEEDS OFFICE  
 ONEIDA COUNTY  
 FILED

SEP 10 2018

KYLE J. FRANSON  
 REGISTER OF DEEDS

(i) I, Jeffrey W. Austin, Professional Land Surveyor No. S-1885, hereby certify that the corner location on this record was determined by me or under my direction and control and that this U.S. Public Land Survey Monument Record is correct and complete to the best of my knowledge and belief.

*[Handwritten Signature]*  
 Signature

SEP. 5, 2018  
 Date