

**FILED**  
JUL 2 2008

At \_\_\_\_\_ O'Clock \_\_\_\_\_ M  
**THOMAS H. LEIGHTON**  
REGISTER OF DEEDS

**U.S. PUBLIC LAND SURVEY MONUMENT RECORD**

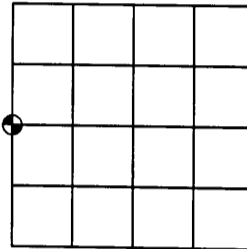
Note: This form is intended and designed to fulfill all requirements of the Wisconsin Administrative Code, Chapter A-E 7.08 U.S. Public Land Monument Record (3)(a)(b)(c)(d)(e)(f)(g)(h)(i). An additional sheet may be added if necessary to conform with said requirements.

**(a) CORNER LOCATION:**

West 1/4 corner of Sec. 33  
Township 38 North  
Range 8 East  
Town of Newbold  
County of Oneida

**O.C. COORDINATES**

North: 201733.0001  
East: 239129.4917  
Control Station: 262 S  
North: 199107.0090  
East: 239237.0440  
Method: by conventional traverse



**(b) HISTORY OF ORIGINAL CORNER ESTABLISHMENT**

Original Surveyor: Alexander Anderson  
Date of Survey: Commenced July 10, 1863  
Completed July 21, 1863

Original B.T.'S: 12" Tamarack, S67°E, 13 links  
9" Tamarack, S38°W, 24 links

SECTION 33

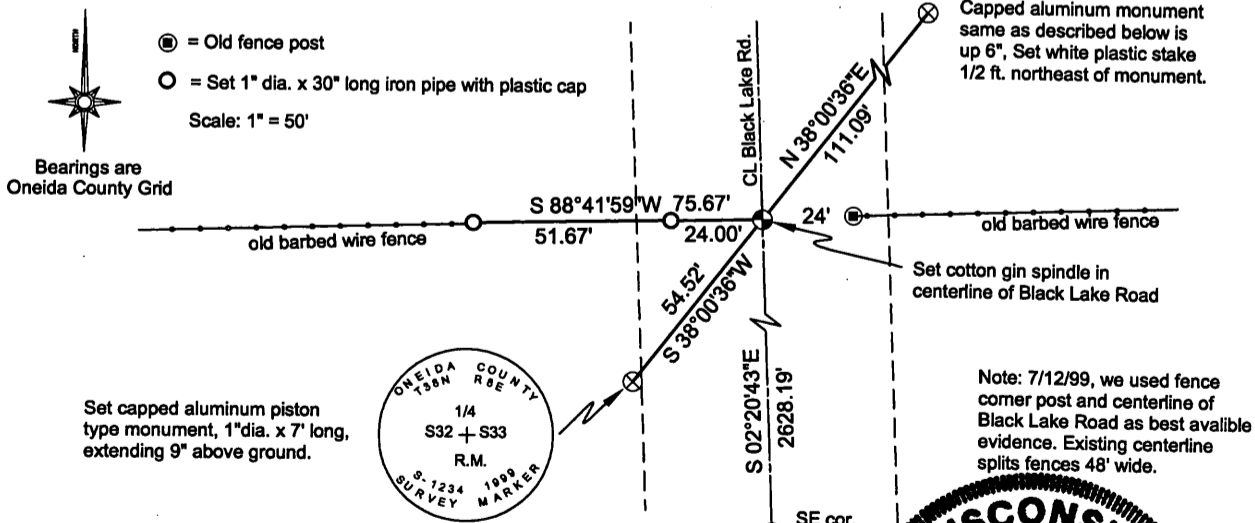
(f)(g)(h) DESCRIPTION OF MONUMENT FOUND AT THIS CORNER AND IF IT WAS ACCEPTED, STATE ALL EVIDENCE (MATERIAL, TESTIMONIAL, OCCUPATIONS, PLATS, RECORDS, OTHER MONUMENTS) USED AS A BASIS FOR ESTABLISHING LOCATION. IF NOT ACCEPTED OF IF NOTHING WAS FOUND, STATE EVIDENCE USED AS BASIS FOR ESTABLISHING LOCATION. IF REESTABLISHED THROUGH LOST CORNER PROPORTIONATE METHODS, INDICATE ALL MONUMENTS, DISTANCES AND DIRECTIONS USED TO ESTABLISH. INDICATE TYPE OF MONUMENT AND SIGN POST FOUND OR SET.

June 26, 1910 - D.H. Vaughn, Oneida County Surveyor, Field Book 6, page 148, found the E 1/4 post of Section 32 in center of road referenced by stump of original southeast bearing tree. He measures 39.83 chains (2628.78 feet) between E 1/4 and southeast section corner.

July 1, 1929 - H.C. Hall, Oneida County Surveyor, Hall Book 1, page 18, in Section 33, located W 1/4 corner in north-south road referenced by original bearing trees; Tamarac stump bearing S38W, 0.13 chains and a Tamarac stump bearing S38W, 0.24 chains. No monument marks corner, but it lines up very close with old fence west.

July 7, 1999 - James D. Rein, R.L.S. #1234, unable to find any monument at the corner position. I re-establish the corner at an intersection of the road centerline with old East and West fence lines. This position splits old corner fence posts that are 48 feet apart. Our measured distance of 2628.19 feet between this corner and the southwest section corner compares to Vaughn's 2628.78 feet record. We set a cotton gin spindle and make new reference ties as shown below in the plan.

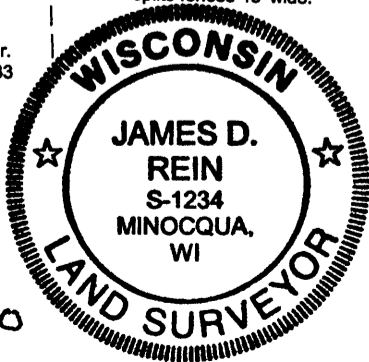
(c)(d)(e) PLAN VIEW OF CORNER WITH TIES TO AT LEAST 4 WITNESS MONUMENTS. IF IN DISAGREEMENT WITH PREVIOUSLY ESTABLISHED CORNER, SHOW THE DISTANCE BETWEEN THE TWO CORNERS AND ALSO INDICATE THE TIES TO THE DISPUTED CORNER.



(i) I, JAMES D. REIN, REGISTERED LAND SURVEYOR NO. S-1234 HEREBY CERTIFY THAT THE CORNER LOCATION ON THIS RECORD WAS DETERMINED BY ME OR UNDER MY DIRECTION AND CONTROL AND THAT THIS U.S. PUBLIC LAND SURVEY MONUMENT RECORD IS CORRECT AND COMPLETE TO THE BEST OF MY KNOWLEDGE AND BELIEF.

SIGNATURE

7/13/99  
DATE 3808322000



INDEX NO. X-9