

U. S. PUBLIC LAND SURVEY MONUMENT RECORD

INSTRUCTIONS : This record shall show the location of the corner and shall include all of the following nine elements (a through i).

(a) Identify the corner by reference to the U.S. public land survey system.

○ = Corner monument restored.

**NE CORNER, SECTION 12
TOWNSHIP 38 NORTH, RANGE 9 EAST,
ONEIDA COUNTY, WIS.**



- July 1859 Hiram Fellows set orig. corner N. betw. 7&12 26.70 lake, 60.00 over lake 80.00 set post to Sec. 1-6-7-12 B.T.s Hemlock 20 S5W 25; Sugar 20 N62W 46; Hemlock 18 N12E 12; Birch 16 S34E 32
- April 1908 D.H. Vaughan reset corner from orig. B.T.s which are dead or cut made a new B.T. Sugar 10 N47W 38. July 1914 recovered corner
- June 1956 Hugh Crawford a General Land Office surveyor executed a resurvey of the area and states: The corner of 1-6-7-12 is marked by a 1/2" iron pipe, this is a preserved original point reestablished by an Oneida County Surveyor. He set a brass tablet in concrete and made B.T.s: Basswood 8 N31E 20lks; Birch 12 S28E 19lks; Ash 10 S55W 27lks; Ash 12

(b) Describe any record evidence, monument evidence, occupational evidence, testimonial evidence or any other material evidence you considered, and whether the monument was found or placed.
N 48 1/4 W 15lks.

At this corner I found the G.L.O. monument in good condition and found the B.T.s

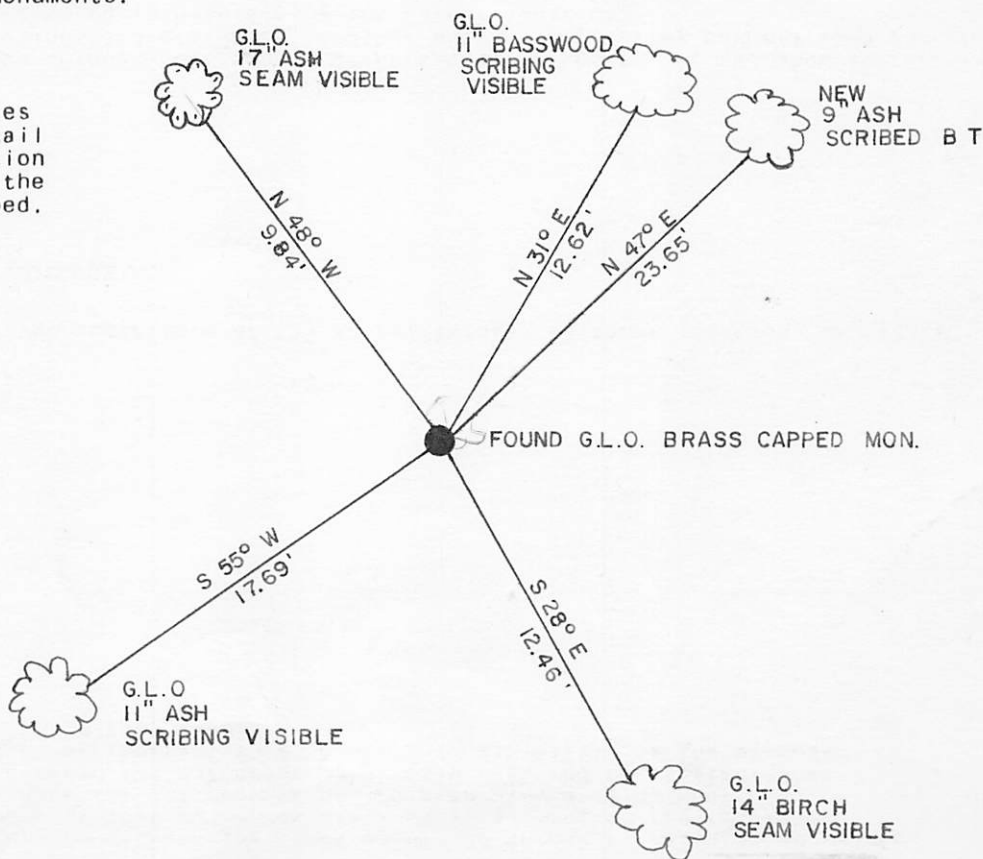
(c) In the plan view drawing below, provide reference ties to at least 4 witness monuments, or, if the location is within a municipality, to at least 2 witness monuments. (Witness monuments shall be made of concrete, natural stone, iron or other equally durable material.) Describe witness monuments.

(d) Show a plan view drawing depicting the relevant monuments and reference ties which is sufficient in detail to enable accurate relocation of the corner monument if the corner monument is disturbed. Indicate north.



MAGNETIC BEARINGS
WITH HAND HELD
COMPASS

- MEASURED TO IRON SPIKES
IN APPROX. CENTER OF TREES



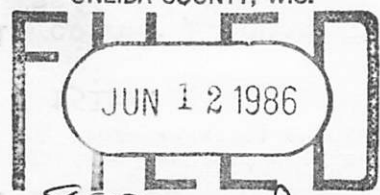
E-25

(e) Describe any material discrepancy between the location of the corner as restored or reestablished and the location of that corner as previously restored or reestablished by distance and direction. Show the discrepancy on the plan view drawing under (d), above. Show the distances between the corner as previously restored or reestablished and (1) the corner as restored or reestablished, and (2) to at least 2 of the witness monuments shown on the drawing in (d), above.
found none

(f) Was the corner restored through acceptance of (1) an obliterated evidence location, or, (2) a found perpetuated location?
a found perpetuated location

(g&h) Was the corner reestablished through lost corner proportionate methods? If so, show the method, including the directions and distances to other public land survey corners used as evidence or used for proportioning in determining the corner location?
n/a

REGISTER OF DEEDS OFFICE
ONEIDA COUNTY, WIS.



At 8:00 O'Clock A M
DORIS VERASE KUEHN
REGISTER OF DEEDS



(i) I, Michael J. Romportl
(type or print name) certify that the corner location shown on this record was determined by me or under my direction and control and that this U.S. Public Land Survey Monument Record is correct and complete to the best of my knowledge and belief.

Michael J. Romportl
Signature

2-3-84
Date

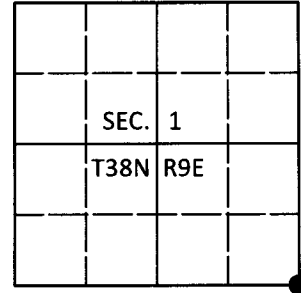
Michael J. Romportl R.L.S. 1624
Genisot & Associates, Inc. Rhineland, Wis.

U.S. PUBLIC LAND SURVEY MONUMENT RECORD

Note: This form is intended and designed to fulfill all requirements of Wisconsin Administrative Code, Chapter A-E 7.08 U.S. Public Land Survey Monument Record (3)(a-i).

(a) CORNER LOCATION
 Cor. of Secs. 1, 6, 7 & 12
 Township 38 North
 Range 9 & 10 East of the 4th P.M.
 Town of Sugar Camp
 County of Oneida

WISCORS - Oneida County
 N: 225,498.98 USft
 E: 292,474.54 USft
 Datum: NAD 83(2011)
 GNSS Method: RTN - Direct
 GNSS Control: WISCORS VRS



(b) HISTORY OF ORIGINAL CORNER ESTABLISHMENT

Original Surveyor: _____ Original Accessories: _____
 Date of Survey Commenced: _____ See previous USPLS Monument Record
 Completed: _____

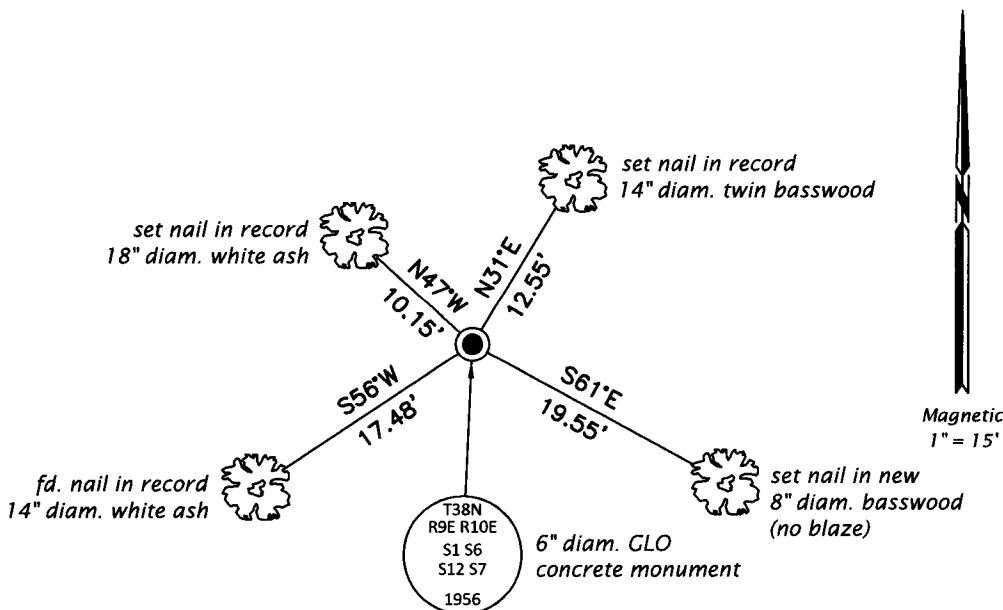
(b)(f)(g)(h) Description of monument found at this corner and if it was accepted, state all evidence (material, testimonial, occupational, plats, records, other monuments) used as a basis for accepting. If not accepted or if nothing was found, state evidence used as basis for establishing location. If re-established through lost corner proportionate methods, indicate all monuments, distances and directions used to establish. Indicate type of monument and sign post found or set.

This is a perpetuation of a previous USPLS Monument Record by Michael J. Romportl, RLS dated February 3, 1984 and filed in the office of the Oneida County Register of Deeds. A complete history of the corner can be found on the previous monument record. I accept the previous location as a true and faithful perpetuation or reestablishment of the original corner location and further perpetuate it as follows.

May 15, 2018: I found and accepted the record monument, a 6" diam. concrete monument with a 3-1/4" diam. GLO brass tablet projecting 6" above the ground surface. A 1" diam. iron pipe is adjacent to the monument. The record bearing trees at N47°E and S28°E are dead or down. I found or established accessories as shown below. I set a white vinyl sign post bearing Northwest, 1.0 ft.

The coordinate value shown has been verified by at least one of the following methods: 1) comparison to a previously GPS determined published value; 2) the value is the average of two or more GPS observations at a markedly different time; 3) one or more distances were measured back to the GPS observed corner from temporary GPS observed offset locations.

(c)(d)(e) Plan view of corner with ties to at least 4 witness monuments. If in disagreement with previously established corner, show the distances between the two corners and also indicate the ties to the disputed.



REGISTER OF DEEDS OFFICE
 ONEIDA COUNTY
 FILED

JUN 13 2018

KYLE J. FRANSON
 REGISTER OF DEEDS

(i) I, Jeffrey W. Austin, Professional Land Surveyor No. S-1885, hereby certify that the corner location on this record was determined by me or under my direction and control and that this U.S. Public Land Survey Monument Record is correct and complete to the best of my knowledge and belief.

 Signature Date JUNE 4, 2018