

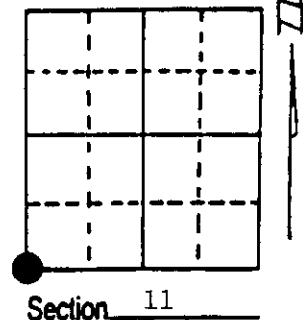
U.S. PUBLIC LAND SURVEY MONUMENT RECORD

Note: This form is intended and designed to fulfill all requirements of Wisconsin Administrative Code, Chapter A-E 7.08 U.S. Public Land Survey Monument Record (3) (a) (b) (c) (d) (e) (f) (g) (h) (i). An additional sheet may be added if necessary to conform with said requirements.

(a) Corner location: Township 38 North
 Range 9 East/West

Town/City/Village SUGAR CAMP

County ONEIDA



(b) (f) (g) (h) Description of monument found at this corner and if it was accepted, state all evidence (material, testimonial, occupational, plats, records, other monuments) used as a basis for accepting. If not accepted or if nothing was found, state evidence used as basis for establishing location. If reestablished through lost corner proportionate methods, indicate all monuments, distances and directions used to establish. Indicate type of monument found or set and sign post.

9/1863 - Wm. Daugherty established this corner at 80.00 chains and set wood post with two BTs:
 12" Birch, S55°E, 5 links 12" Sugar, S85°W, 11 links

5/8/1908 - Vaughan restored as stated by Antone Stefanick and set new wood post with two Birch stumps. 15" Birch stump, N29½E, 33 19" Birch stump, S52½W, 35.

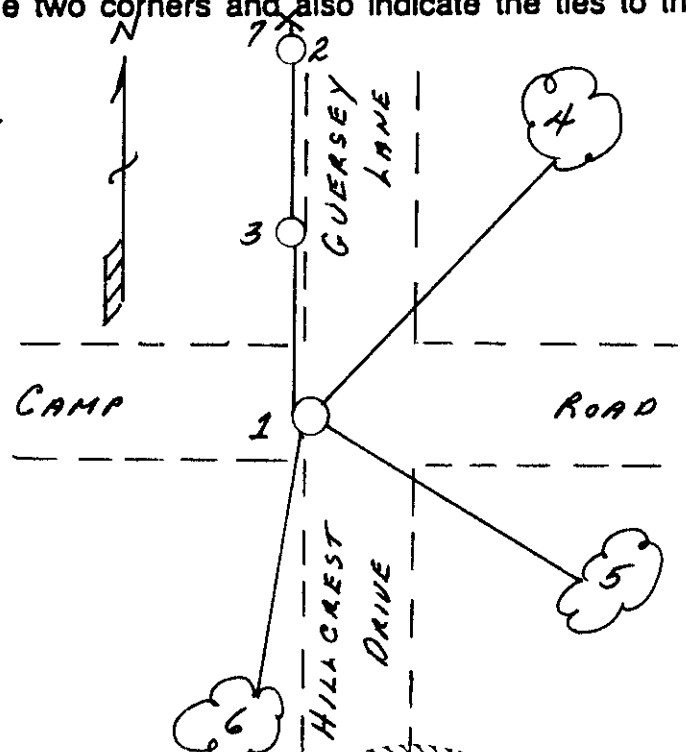
4/20/1994 - We found corner position marked by a 3/4" x 2" x 36" steel bar below road surface. Tony Lorbetske stated his father-in-law (Martin Kunva), a resident since 1920, said "That this position has been the corner".

We placed a 2" x 36" aluminum monument for corner, with the 3/4" x 2" x 36" bar and a 2" x 36" aluminum monument as references with three bTs and plastic sign post.

(c) (d) (e) Plan view of corner with ties to at least 4 witness monuments. If in disagreement with previously established corner, show the distances between the two corners and also indicate the ties to the disputed corner.

- 1) 2" x 36" aluminum monument.
- 2) 2" x 36" aluminum monument, North, 60.30'.
- 3) 3/4" x 2" x 36" steel bar, North, 30.30'.
- 4) 10" Red Pine, N38°E, 85.53'.
- 5) 6" Scotch Pine, S64°E, 76.42'.
- 6) 8" Red Pine, S14°W, 64.03'.
- 7) Plastic sign post, North, 60.8'.

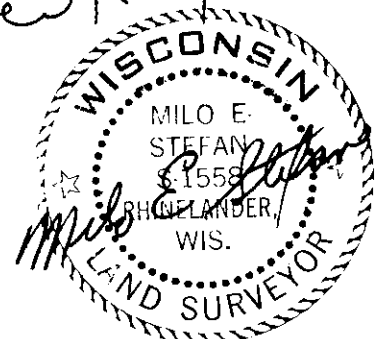
Distance to nail in side of BTs.
 Stump blaze scribed BT.



(i) I, Milo E. Stefan
 (type or print name) certify that the corner location on this record was determined by me or under my direction and control and that this U.S. Public Land Survey Monument Record is correct and complete to the best of my knowledge and belief.

Milo E Stefan
 Signature

May 19, 1994
 Date



Stamp 3809100050

Index No. J-17

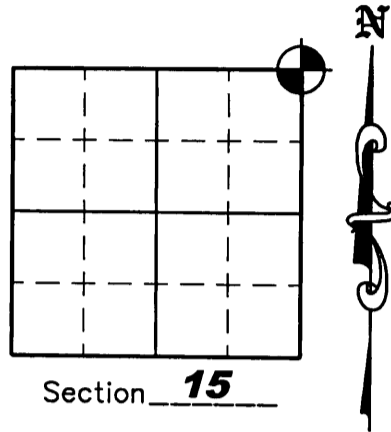
U.S. PUBLIC LAND SURVEY MONUMENT RECORD

NOTE: This form is intended and designed to fulfill all requirements of Wisconsin Administrative Code, Chapter A-E 7 .08 U.S. Public Land Survey Monument Record (3)(a)(b)(c)(d)(e)(f)(g)(h)(i). An additional sheet may be added if necessary to conform with said requirements.

(a) Corner location: Township 38 North
Range 09 East

Town of SUGAR CAMP

County of ONEIDA



(b)(f)(g)(h) Description of monument found at this corner and if it was accepted, state all evidence (material, testimonial, occupation, plats, records, other monuments) used as a basis for accepting. If not accepted or if nothing was found, state evidence used as a basis for establishing location. If reestablished through lost corner proportionate methods, indicate all monuments, distances and directions used to establish. Indicate type of monument found or set and sign post.

April 20, 1994 – Milo E. Stefan found a 3/4" steel bar below road surface and replaced it with a 2" Aluminum Monument – See U.S.P.L.S Monument Record dated May 19, 1994

July 29, 2004 – Due to road construction Nicolet Surveyors, Inc. was contacted by Oneida County Land Information Office to preserve the location of this survey marker. Jonathan W. Dulin found a 2" Aluminum Monument 2.5' South of the centerline of Camp Four Road along with 2 bearing trees and 2 reference monuments. We witnessed the corner as shown below.

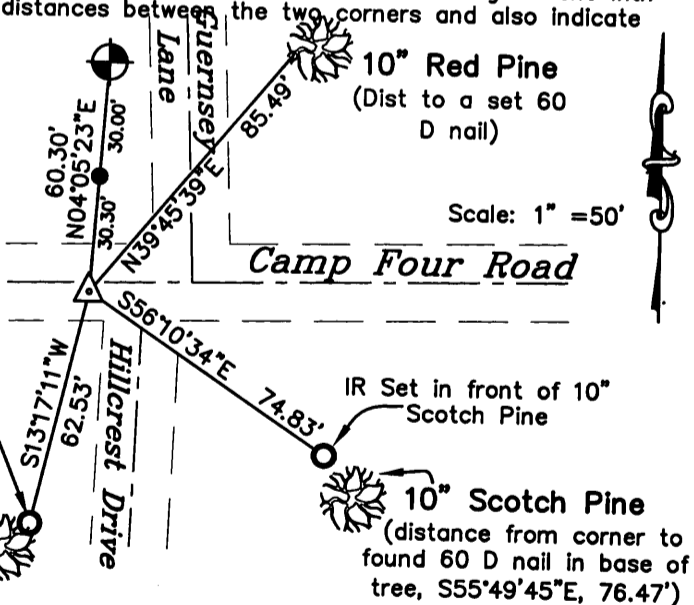
August 12, 2005 – After road construction we reset a P.K. Nail at this location.

(c)(d)(e) Plan view of corner with ties to at least 4 witness monuments. If in disagreement with previously established corner, show the distances between the two corners and also indicate the ties to the disputed corner.

LEGEND

- 2" Aluminum Mon. Found
- 3/4" x 24" Iron rebar Set Weighing 1.50 lbs/lin. ft.
- 3/4" X 2" Iron Bar Found
- P.K. Nail Set

12" Red Pine
(distance from corner to found 60 D nail in base of tree N03°12'43"E, 64.06')



(i) I, Jonathan W. Dulin, certify that the corner location on this record was determined by me under my direction and control and that this U.S. Public Land Survey Monument is correct and complete to the best of my knowledge and belief.

Signature Date 10-8-2007

JONATHAN W. DULIN
S-2754
RHINELANDER WISCONSIN
LAND SURVEYOR

REGISTER OF DEEDS OFFICE
ONEIDA COUNTY, WIS.

OCT 22 2007

At _____ O'Clock _____ M
THOMAS H. LEIGHTON
REGISTER OF DEEDS

3809100000

Index No. J-17