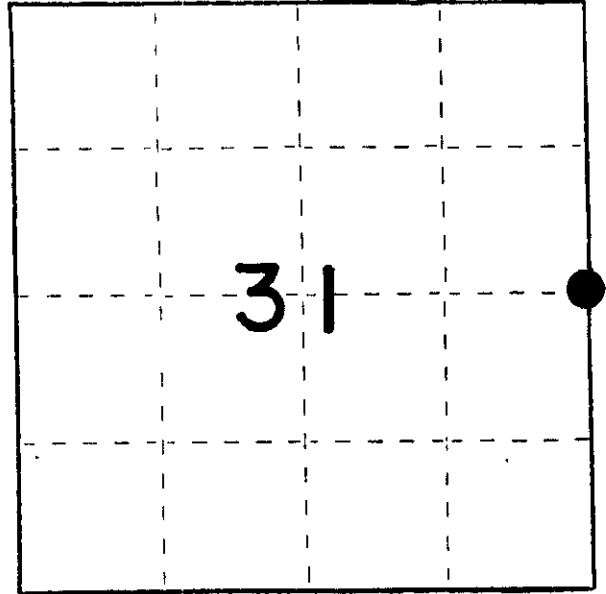


U. S. PUBLIC LAND SURVEY MONUMENT RECORD

INSTRUCTIONS: This record shall show the location of the corner and shall include all of the following nine elements (a through i).

- (a) Identify the corner by reference to the U.S. public land survey system.
 ○ = Corner monument restored.

EAST 1/4 CORNER OF SECTION 31,
 138N, 19E

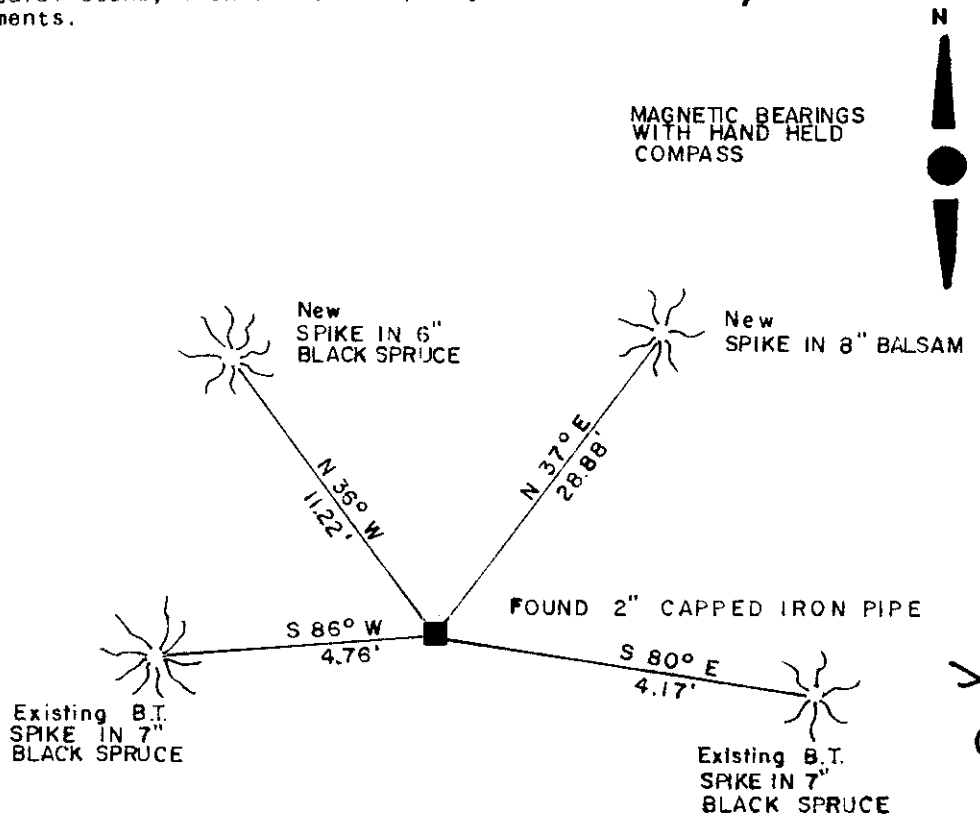


- (b) Describe any record evidence, monument evidence, occupational evidence, testimonial evidence or any other material evidence you considered, and whether the monument was found or placed.

original corner set by Wm. Daugherty in 1863. north between 31 & 32. 40.00 set post. 11" Tam. 6" N31. 33 lks, Tam. 8" S46. 47 lks. D.H. Vaughan was at corner in 1915. No original evidence. I found a 2" iron pipe with a square cap and 2 bearing trees.

- (c) In the plan view drawing below, provide reference ties to at least 4 witness monuments, or, if the location is within a municipality, to at least 2 witness monuments. (Witness monuments shall be made of concrete, natural stone, iron or other equally durable material.) Describe witness monuments.

- (d) Show a plan view drawing depicting the relevant monuments and reference ties which is sufficient in detail to enable accurate relocation of the corner monument if the corner monument is disturbed. Indicate north.



(e) Describe any material discrepancy between the location of the corner as restored or reestablished and the location of that corner as previously restored or reestablished by distance and direction. Show the discrepancy on the plan view drawing under (d), above. Show the distances between the corner as previously restored or reestablished and (1) the corner as restored or reestablished, and (2) to at least 2 of the witness monuments shown on the drawing in (d), above.

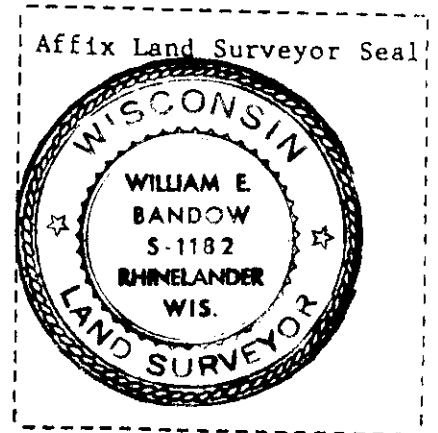
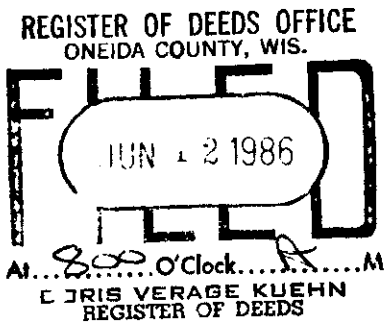
NOTE

(f) Was the corner restored through acceptance of (1) an obliterated evidence location, or, (2) a found perpetuated location?

Found perpetuated location

(g&h) Was the corner reestablished through lost corner proportionate methods? If so, show the method, including the directions and distances to other public land survey corners used as evidence or used for proportioning in determining the corner location?

No



(i) I, William E. Bandow (type or print name) certify that the corner location shown on this record was determined by me or under my direction and control and that this U.S. Public Land Survey Monument Record is correct and complete to the best of my knowledge and belief.

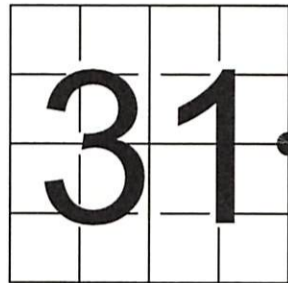
William E. Bandow Signature 2-2-84 Date

U S PUBLIC LAND SURVEY MONUMENT RECORD

NOTE: This form is intended and designed to fulfill all requirements of Wisconsin Administrative Code, Chapter A-E 7.08 U.S. Public Land Survey Monument Record (3) (a-i)

A-E 7.08(3)(a) Identity of corner
 EAST 1/4 CORNER OF SECTION 31
 TOWNSHIP 38 NORTH
 RANGE 09 EAST OF THE 4TH PM
 TOWN OF SUGAR CAMP,
 COUNTY OF ONEIDA

WISCRS - ONEIDA COUNTY
 N: 201,661.867 USft (201,662.205)
 E: 266,337.022 USft (266,336.542)
 Datum: NAD83 (2011)
 GNSS Method RTN - Direct
 GNSS Control WISCORS VRS



The coordinate value shown has been verified by the average of two or more GPS observations at a markedly different time.

A-E 7.08(3)(b) Description of any record evidence, monument evidence, occupational evidence, testimonial evidence, or any other material evidence.

Original Surveyor: William E. Daugherty

REGISTER OF DEEDS OFFICE
 ONEIDA COUNTY
 FILED

Date of Original Survey Commenced: September 14, 1863
 Completed: September 21, 1863

APR 21 2022

Original Accessories:

See Previous Monument Record:
 Index No. X-5

KYLE J. FRANSON
 REGISTER OF DEEDS

Tamarc 6 N. 31° W. 83
 Tamarc 8 S. 46° E. 47

January 07, 1902 - Surveyor D.H. Vaughn - In Surveying Section 31, T. 38 N. R. 09 E. Notes: "1/4 P." and adds his opinion: " This 1/4 P is not the orig. Do not think the E. line was run by U.S. Surveyor. But some surveyor has run a line from N.E. to S.E. cor. and set this 1/4 P. and I used it:
 July 07, 1915 - Surveyor D.H. Vaughn - In Surveying Section 31, T. 38 N. R. 09 E. Notes: "1/4 Post" and adds his opinion: "it is not a govt post. but was set by someone who had run from NE to SE cors. and as his random is plain and looks, I used his post".
 February 05, 1955 - Surveyor 00259 - Norman J. Loftus - Set W. 1/4 41.35 ch north of SE corner of Section 31, from RIPCO book.
 May 17, 1979 - Surveyor 1418 - William H. Stuth - Notes "1/4 COR. B.F. Dorr's by Norman Loftus R.L.S. RIPCO" From Owens Illinois notes, Oneida County map L238.
 February 02, 1984 - Surveyor 1182 - William E. Bandow - Found a 2" iron pipe with a square cap, and 2 Bearing Tree's. Bandow prepared U.S. Public Land Survey Monument Record X-5.
 April 24, 2008 - Surveyor 2852 - Joshua W. Prentice - Indicates a found 2" iron pipe monument with RIPCO plate at this location on Oneida County map C2589.

A-E 7.08(3)(f) Whether the corner was restored through acceptance of an obliterated location or a found perpetuated location.

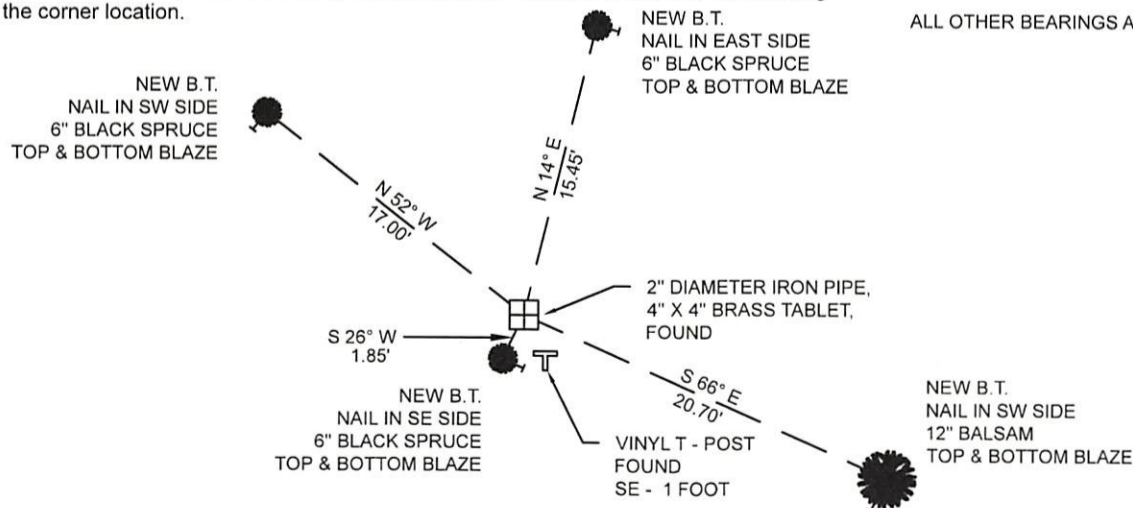
January 3, 2022 - I found a 2" diameter iron pipe, with a 4" x 4" brass tablet affixed to the top & stamped to identify corner. Monument extends ±3 feet above grade, and is in a wet area with dense tree cover. I measured the west side base of the monument, and found the difference in coordinate measurements to differ by 0.338 feet in the northing and 0.48 feet in the easting. This position agrees within reason to the location measured in 2008 by Josh Prentice as shown on OCS Map C2589. I believe today's measurement to be correct.

All previous witnesses are gone.

I accept this monument as a FOUND PERPETUATED LOCATION OF THE CORNER and established new witnesses as shown below.

A-E 7.08(3)(c)(d)(e)(h) Plan view of corner with references to at least 4 witness monuments. If in disagreement with previously established corner, show the distances between the two corners and also indicate the ties to the disputed. The directions and distances to other public land survey corners used as evidence or used for determining the corner location.

BEARINGS LISTED TO THE NEAREST SECOND ARE REFERENCED TO WISCONSIN COUNTY COORDINATE REFERENCE SYSTEM - ONEIDA COUNTY ZONE. ALL OTHER BEARINGS ARE MAGNETIC



A-E 7.08(3)(i) I, Jeffrey L. DeMuth, Professional Land Surveyor No. S-2656, hereby certify that the corner location on this record was determined by me or under my direction and control and that this U.S. Public Land Survey Monument Record is correct and complete to the best of my knowledge, and belief



Handwritten signature of Jeffrey L. DeMuth

February 14, 2022

SIGNATURE

DATE