

CERTIFIED LAND CORNER RESTORATION

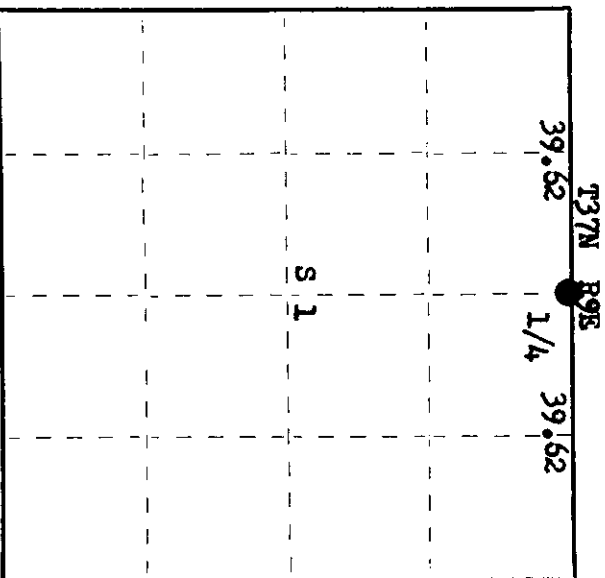
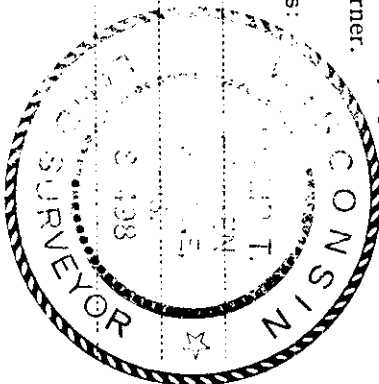
Index No. **A-23**

3809360020

State of Wisconsin } ss.
County of **Oneida**

I **Phillip T. Hansen**, do hereby certify that on the **3rd** day of **December**, 19 **76**, I found evidence of the **Quarter** corner of **Section 36 & 1** Township **37 & 38**, North, Range **9 East**, Fourth Principal Meridian, as described hereon; and that from this evidence I established a new monument and accessories as described hereon to perpetuate the original location of this corner.

Resident witnesses:
Jim Claflin
Herb Wagoner



○ = Corner monument restored.

History of original corner establishment: Original Corner established by H.C. Fellows in 1863 from which Sugar 6" bears S 56° E 10 links, Birch 4" N 33° W 25 links.

Corner recovered by B.F. Dorr, County Surveyor, in 1894.

Corner established by N. Loftus, Ripco Surveyor, in 1956. Ran random line N 87° 15E from Section Corner 35, 36, 1 & 2, 79.235 chains to close out 1.375 chains north of Section Corner 36, 31, 6 & 1.

Set 1/4 corner by proportion at 39.62 chains equidistant. Set iron pipe with brass cap. Marked NBTs - Black Spruce 5" S 90° E 20 1/2 links

Black Spruce 5" N 61° E 18-3/4 links

Description of corner evidence found:

Recovered 2" iron pipe with 4" square brass cap in good condition and securely in ground.

Recovered OBTFs - Black Spruce 5" (6") S 9° E 20.5 links (21.5 links).

Black Spruce 5" (6") N 61° E 18.75 links, scribing not legible.

Description of monument and accessories I established to perpetuate the original location of this corner.

As monument was recovered in good condition and securely in ground, it was left in place.

Cap is stamped:

Monument projects 10" above ground.

NBT - Black Spruce 6" S 52° W 27.9 links, scribed 1/16 BT.

R9E
36 | T38N
S1 | T37N
RIPCO

Dated at **Rhinelander**, Wis., this **22nd** day of **December**, 19 **76**

Signature *Phillip T. Hansen* Title **Registered Land Surveyor** Registration No. **S-498**
(County Surveyor, Registered Land Surveyor, or other duly authorized official)

Office of Register of Deeds, County of **Oneida**. I hereby certify that the within instrument was filed in this office for record on the **18th** day of **February**, 19 **77** at **10:05** o'clock **A.** M.

Steven Savage Tuckin
(Register of Deeds)

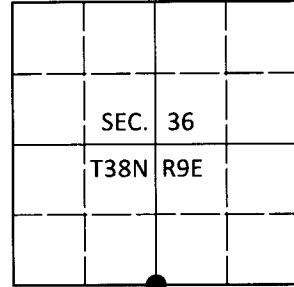
By *Joseph M. Hansen* Deputy

U.S. PUBLIC LAND SURVEY MONUMENT RECORD

Note: This form is intended and designed to fulfill all requirements of Wisconsin Administrative Code, Chapter A-E 7.08 U.S. Public Land Survey Monument Record (3)(a-i).

(a) CORNER LOCATION
 1/4 Cor. of Secs. 1 & 36
 Township 37 & 38 North
 Range 9 East of the 4th P.M.
 Town of Pine Lake & Sugar Camp
 County of Oneida

WISCRS - Oneida County
 N: 199,078.62 USft
 E: 289,613.18 USft
 Datum: NAD83(2011)
 GNSS Method: RTN - Direct
 GNSS Control: WISCORS VRS



(b) HISTORY OF ORIGINAL CORNER ESTABLISHMENT

Original Surveyor:

Original Accessories:

Date of Survey Commenced:
 Completed:

see previous monument record

(b)(f)(g)(h) Description of monument found at this corner and if it was accepted, state all evidence (material, testimonial, occupational, plats, records, other monuments) used as a basis for accepting. If not accepted or if nothing was found, state evidence used as basis for establishing location. If re-established through lost corner proportionate methods, indicate all monuments, distances and directions used to establish. Indicate type of monument and sign post found or set.

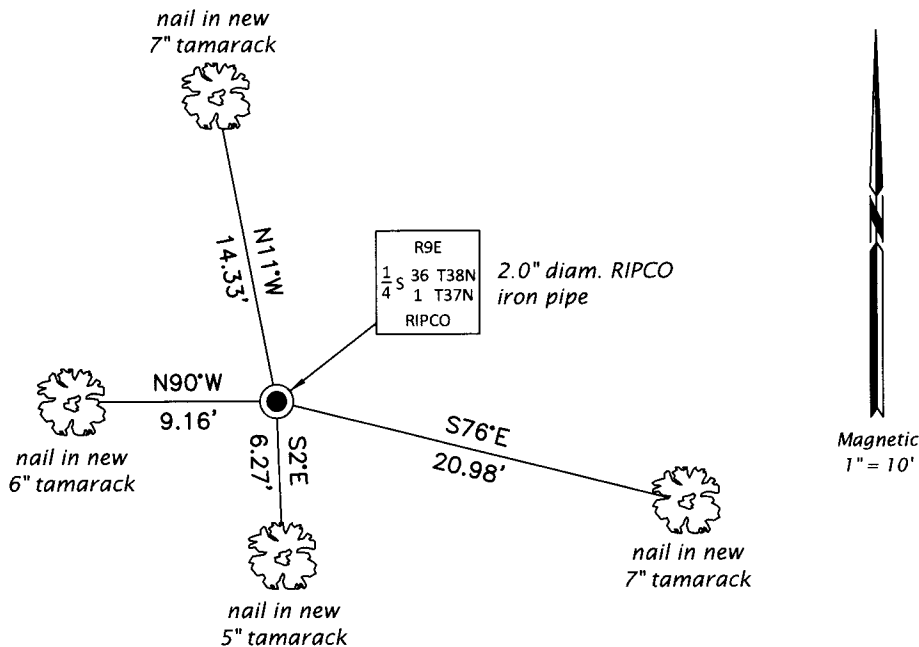
This is a perpetuation of the following monument record(s) that comprise a complete history of the corner:

Dec. 22, 1976: Certified Land Corner Restoration No. 3809360020 by Philip T. Hansen, RLS

June 3, 2019: I found and accepted the record monument, a 2.0" diam. iron pipe with a 4.0" sq. RIPCO brass plate projecting 10" above the bog surface. All of the record bearing trees are now stumps. I established accessories as shown below. I set a wood post bearing Northeast, 0.7 ft.

The coordinate value shown has been verified by at least one of the following methods: 1) comparison to a previously GPS determined published value; 2) the value is the average of two or more GPS observations at a markedly different time; 3) one or more distances were measured back to the GPS observed corner from temporary GPS observed offset locations.

(c)(d)(e) Plan view of corner with ties to at least 4 witness monuments. If in disagreement with previously established corner, show the distances between the two corners and also indicate the ties to the disputed.



REGISTER OF DEEDS OFFICE
 ONEIDA COUNTY
 FILED

JUN 18 2019

KYLE J. FRANSON
 REGISTER OF DEEDS

(i) I, Jeffrey W. Austin, Professional Land Surveyor No. S-1885, hereby certify that the corner location on this record was determined by me or under my direction and control and that this U.S. Public Land Survey Monument Record is correct and complete to the best of my knowledge and belief.

[Handwritten Signature]
 Signature

JUNE 2019
 Date