

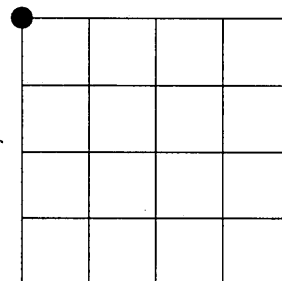
JUL 31 2013

AT \_\_\_\_\_ O'CLOCK \_\_\_\_\_ M  
KYLE J. FRANSON  
REGISTER OF DEEDS

# U.S. PUBLIC LAND SURVEY MONUMENT RECORD

NOTE: This form is intended and designed to fulfill all requirements of Wisconsin Administrative Code, Chapter A-E 7.08 U.S. Public Land Survey Monument Record (3)(a)(b)(c)(d)(e)(f)(g)(h)(i). An additional sheet may be added if necessary to conform with said requirements.

(a) Corner location: Northwest Corner Section 12, Township 38 North, Range 10 East of the 4th P.M.  
Town of Three Lakes, Oneida County, Wisconsin



Section 12

(b)(f)(g)(h) Description of monument found at this corner and if it was accepted, state all evidence (material, testimonial, occupational, plats, records, other monuments) used as a basis for accepting. If not accepted or if nothing was found, state evidence used as basis for establishing location. If reestablished through lost corner proportionate methods, indicate all monuments, distances and directions used to establish. Indicate type of monument found or set and sign post.

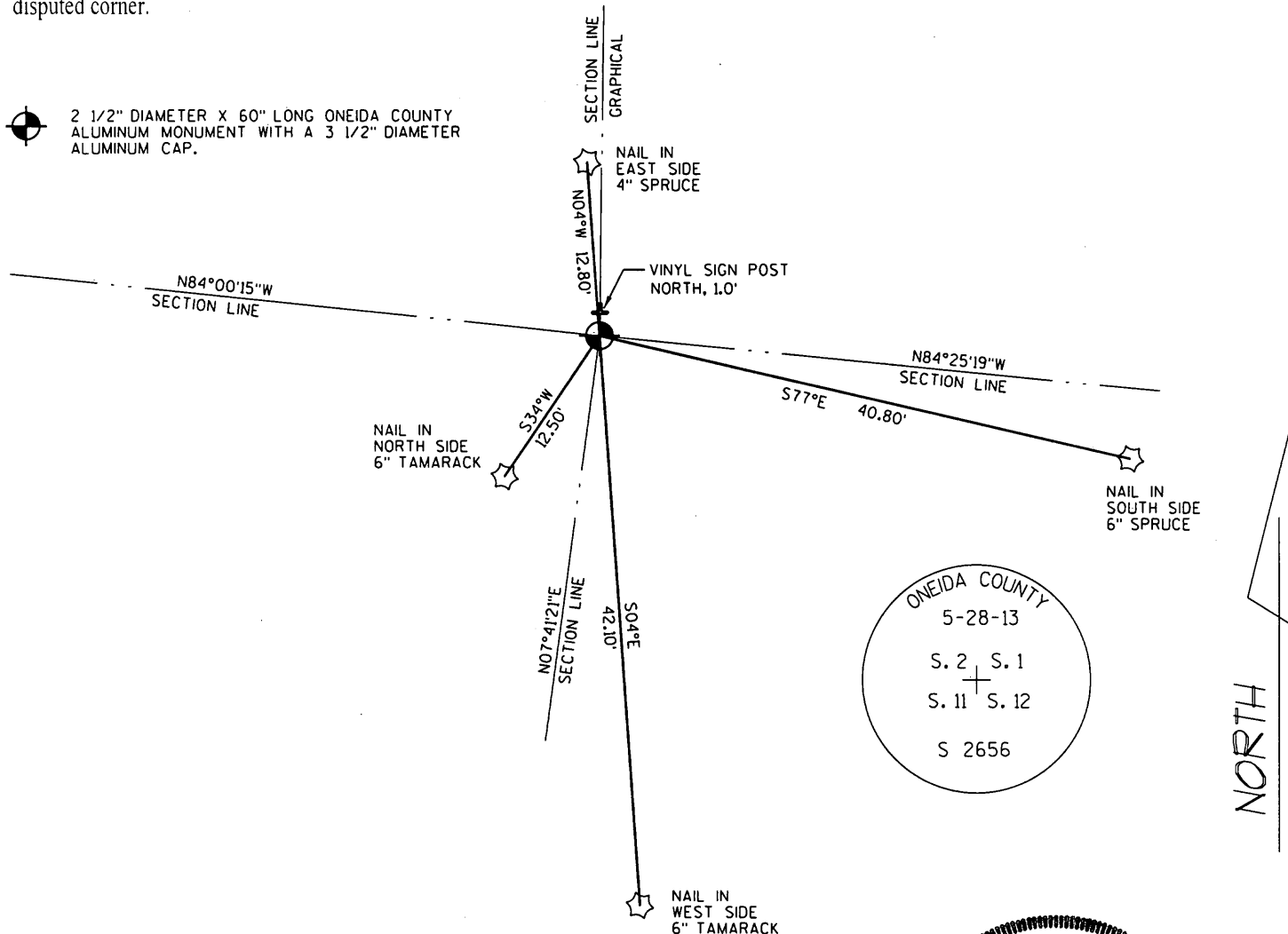
1863 - William E. Daugherty set post common to Sections 1, 2, 11, and 12  
Original BT's:  
Tamarac 6 S3°E 169  
Tamarac 6 N88°W 235

1948 - Gaartz Worksheet - Map #L1171 subdivides Section 12, he does not show a "Diamond" with a "dot" in the center at this location, as he had previously.

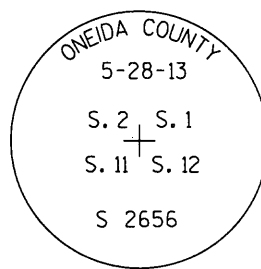
05-29-2013 I found nothing at this location. I used the Gaartz worksheet as the best evidence of the corner position, and set a 2 1/2" diameter X 60" long Oneida County Aluminum Monument with a 3 1/2" diameter Aluminum Cap Stamped to identify the corner and witnessed as shown below. See reverse side of this sheet for calculation.

05-29-2013 WISCRS (Oneida County):  
N 224348.60 USft  
E 318686.71 USft  
Datum: NAD 1983 (2011)

(c)(d)(e) Plan view of corner with ties to at least 4 witness monuments. If in disagreement with previously established corner, show the distances between the two corners and also indicate the ties to the disputed corner.



2 1/2" DIAMETER X 60" LONG ONEIDA COUNTY ALUMINUM MONUMENT WITH A 3 1/2" DIAMETER ALUMINUM CAP.



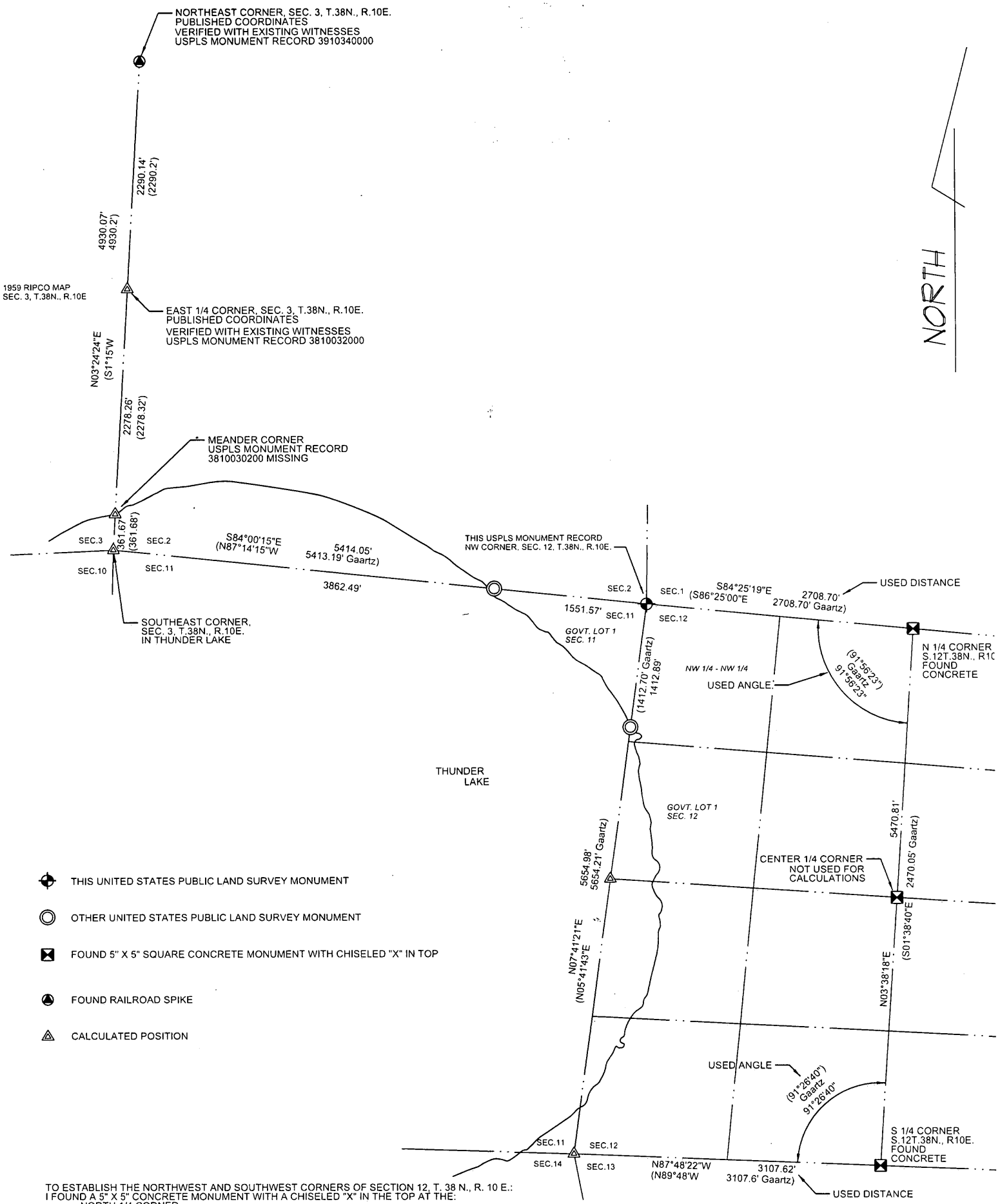
(i) I, Jeffrey L. DeMuth, Registered Land Surveyor #S-2656, hereby certify that the corner location on this record was determined by me or under my direction and control and that this U.S. Public Land Survey Monument Record is correct and complete to the best of my knowledge and belief.

Signature: *[Handwritten Signature]* Date: 07/18/2013

Index No.

E 21

3810020000



- ⊕ THIS UNITED STATES PUBLIC LAND SURVEY MONUMENT
- ⊙ OTHER UNITED STATES PUBLIC LAND SURVEY MONUMENT
- ⊠ FOUND 5" X 5" SQUARE CONCRETE MONUMENT WITH CHISELED "X" IN TOP
- ⊙ FOUND RAILROAD SPIKE
- ⊠ CALCULATED POSITION

TO ESTABLISH THE NORTHWEST AND SOUTHWEST CORNERS OF SECTION 12, T. 38 N., R. 10 E.:  
 I FOUND A 5" X 5" CONCRETE MONUMENT WITH A CHISELED "X" IN THE TOP AT THE:  
 - NORTH 1/4 CORNER.  
 - THE CENTER 1/4 CORNER.  
 - AND THE SOUTH 1/4 CORNER.

ALTHOUGH I ACCEPTED THE CENTER 1/4 CORNER FOR MAPPING IN SECTION 12, THERE IS AN OBVIOUS BEND IN THE NORTH-SOUTH 1/4 LINE, AT THE CENTER 1/4. I DID NOT USE THE CENTER TO ESTABLISH THE NORTHWEST CORNER OR THE CALCULATED SOUTHWEST CORNER.

I USED A STRAIGHT LINE FROM THE SOUTH 1/4 CORNER TO THE NORTH 1/4 CORNER. AS THE DISTANCE COMPARED TO THE GAARTZ WORKSHEET WITHIN 0.76 FEET.

USING THE NORTH 1/4 AS THE VERTEX, I TURNED THE GAARTZ WORKSHEET ANGLE FROM THIS STRAIGHT LINE 91°56'23" CLOCKWISE. I THEN HELD THE GAARTZ WORKSHEET DISTANCE FROM THE NORTH 1/4 CORNER TO THE NORTHWEST CORNER, WHERE I SET AN ONEIDA COUNTY ALUMINUM MONUMENT.

TO ESTABLISH THE WEST 1/4 CORNER OF SECTION 12, T. 38 N., R. 10 E.: OTHER THAN A COORDINATE INVERSE, THE GAARTZ WORKSHEET DID NOT GIVE A DISTANCE ALONG THE WEST LINE OF THE SECTION 2.

THE WORKSHEET DID GIVE DISTANCE FOR THE WEST LINE OF THE NW 1/4 - NW 1/4. I APPLIED A PROPORTION TO THIS DISTANCE, USING THE INVERSE DISTANCE BETWEEN THE NORTHWEST CORNER AND THE SOUTHWEST CORNER, COMPARED TO THE DISTANCE I CALCULATED BY ANGLE FROM THE NORTH-SOUTH 1/4 LINE. I CALCULATED THE WEST 1/4 CORNER TO BE AT THIS LOCATION.

TO ESTABLISH THE MEANDER CORNER ON THE WEST LINE OF SECTION 12, T. 38 N., R. 10 E.: I PLACED AN ONEIDA COUNTY ALUMINUM MONUMENT ON LINE BETWEEN MY CALCULATED NORTHWEST AND MY CALCULATED SOUTHWEST CORNERS AND AT THE INTERSECTION OF THUNDER LAKE..

TO ESTABLISH THE MEANDER CORNER ON THE NORTH LINE OF SECTION 11, T. 38 N., R. 10 E.: BECAUSE THE SOUTHWEST CORNER OF SECTION 3 FALLS IN THUNDER LAKE I CALCULATED ITS POSITION FROM A 1959 RIPCO SURVEY IN WHICH THEY SUBDIVIDED SECTION 3, T. 38 N., R. 10 E.

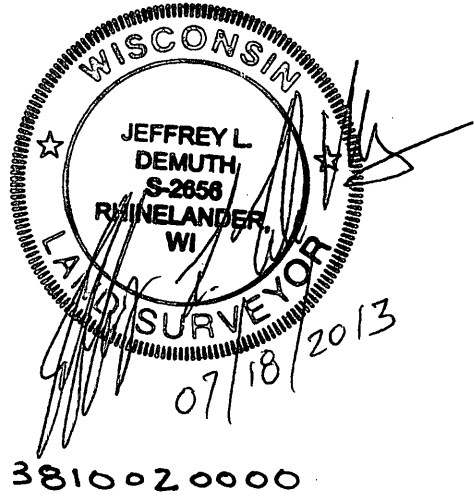
I ALSO USED THE NORTHEAST CORNER OF SECTION 3, WHERE I FOUND A RAILROAD SPIKE AS REFERENCED ON USPLS MONUMENT RECORD 3910340000, AND FURTHER VERIFIED ITS POSITION WITH THE PUBLISHED ONEIDA COUNTY COORDINATES.

I ALSO USED A CALCULATED POSITION FOR THE EAST 1/4 CORNER OF SECTION 3, WHICH IS MISSING. I VERIFIED ITS POSITION WITH EXISTING WITNESSES AS REFERENCED ON USPLS MONUMENT RECORD 3810032000, AND FURTHER VERIFIED ITS POSITION WITH THE PUBLISHED ONEIDA COUNTY COORDINATES FOR THIS CORNER.

THE MEANDER CORNER ON THE EAST LINE OF SECTION 3 IS MISSING. I CALCULATED ITS POSITION FROM THE ABOVE SECTION CORNERS AND THE 1959 RIPCO MAP.

THE SOUTHEAST CORNER OF SECTION 3 FALLS IN THUNDER LAKE. ITS POSITION IS CALCULATED FROM THE ABOVE SECTION CORNERS AND THE 1959 RIPCO MAP.

I PLACED AN ONEIDA COUNTY ALUMINUM MONUMENT ON LINE BETWEEN MY CALCULATED NORTHWEST CORNER OF SECTION 12 AND MY CALCULATED SOUTHWEST CORNER OF SECTION 3, AND AT THE INTERSECTION OF THUNDER LAKE. THE DISTANCE BETWEEN THESE TWO CALCULATED POINTS IS VERIFIED WITH THE GAARTZ WORKSHEET. AMAZING!



3810020000