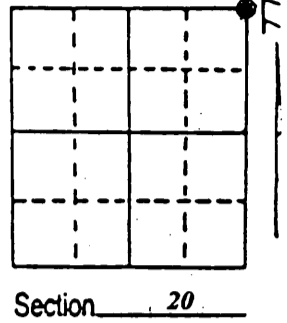


U.S. PUBLIC LAND SURVEY MONUMENT RECORD

Note: This form is intended and designed to fulfill all requirements of Wisconsin Administrative Code, Chapter A-E 7.08 U.S. Public Land Survey Monument Record (3) (a) (b) (c) (d) (e) (f) (g) (h) (i). An additional sheet may be added if necessary to conform with said requirements.

(a) Corner location: Township 38 North
 Range 10 East/West
 Town/City/Village SUGARCAMP
 County ONEIDA



(b) (f) (g) (h) Description of monument found at this corner and if it was accepted, state all evidence (material, testimonial, occupational, plats, records, other monuments) used as a basis for accepting. If not accepted or if nothing was found, state evidence used as basis for establishing location. If reestablished through lost corner proportionate methods, indicate all monuments, distances and directions used to establish. Indicate type of monument found or set and sign post.

Sept. 1863 William E. Daugherty ran North 80.00 Ch. between Sections 20 & 21 and set Section post common to sections 16 17 20 21 made BTs. Birch 20 N 80° W 21 Ironwood 7 S 56° E 27

In 1896 B.F. Dorr found Section corner & stumps of BTs. Made new BT. Sugar 7 S 13 E 4 1/2

In Feb., 1901 Vaughn found original BTS.

In Feb. 1954 N. Loftus found an iron pipe & square white post in field corner & set a RIPCO Monument

I found a 2" iron pipe with a stamped 4" brass plate & square white post & 1.1/8 iron pipe in a pasture Made new BTs. Set plastic sign post and referenced as shown below.

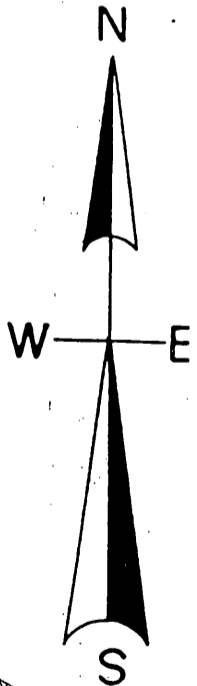
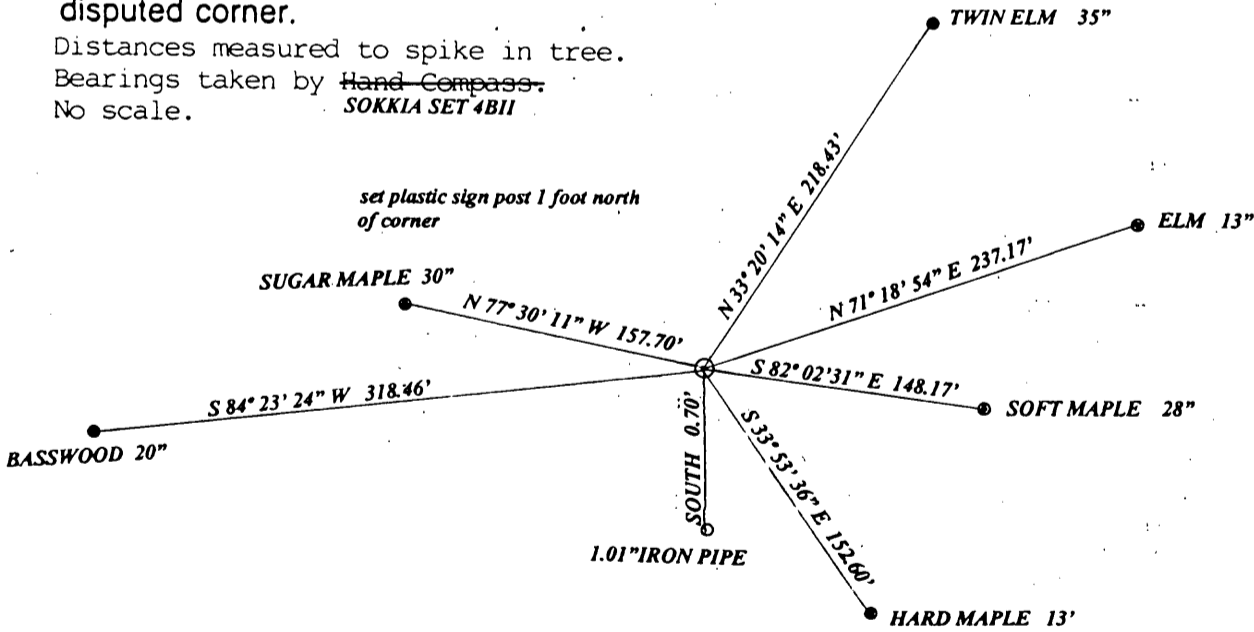
REGISTER OF DEEDS OFFICE
 ONEIDA COUNTY
 FILED

APR 19 2013

AT _____ O'CLOCK _____ M
 KYLE J. FRANSON
 REGISTER OF DEEDS

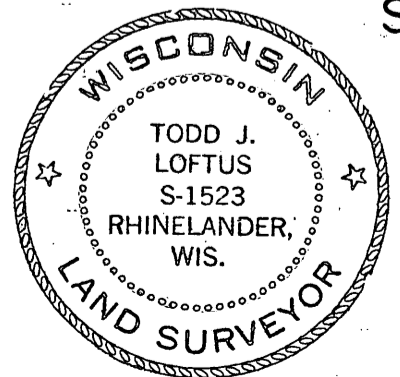
(c) (d) (e) Plan view of corner with ties to at least 4 witness monuments. If in disagreement with previously established corner, show the distances between the two corners and also indicate the ties to the disputed corner.

Distances measured to spike in tree.
 Bearings taken by ~~Hand Compass~~
 No scale. *SOKKIA SET 4BII*



(i) I, Todd J. Loftus
 (type or print name) certify that the corner location on this record was determined by me or under my direction and control and that this U.S. Public Land Survey Monument Record is correct and complete to the best of my knowledge and belief.

Todd J. Loftus Signature
April 3, 2013 Date



Index No. 19

3810170000
 Stamp