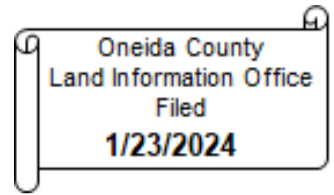


# U.S. PUBLIC LAND SURVEY MONUMENT RECORD

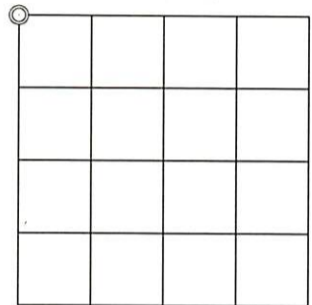
Note: This form is intended and designed to fulfill all requirements of the Wisconsin Administrative Code, Chapter A-E 7.08 U.S. Public Land Monument Record (3)(a)(b)(c)(d)(e)(f)(g)(h)(i). An additional sheet may be added if necessary to conform with said requirements.



(a) CORNER LOCATION: WISCRS - Oneida County  
 Northwest corner of Section 2 North: 198,001.89 USft  
 Township 37 North East: 313,555.85 USft  
 Range 10 East Datum: NAD 83(2011) ep. 2010.00  
 Town of Stella GNSS Method: RTN - Direct  
 County of Oneida GNSS Control: WISCRS VRS

(RECORDING AREA)

## SECTION 2



### (b) HISTORY OF ORIGINAL CORNER ESTABLISHMENT

Original Surveyor: Hiram C. Fellows, Deputy Surveyor  
 Date of Survey: July 1859  
 Original B.T.'S Maple 9" N41°W, 26 lks.  
 Hemlock 10" N46°E, 21 lks.  
 Birch 6" S41°E, 11 lks.  
 Birch 10" S26°W 17 lks.

(f)(g)(h) DESCRIPTION OF MONUMENT FOUND AT THIS CORNER AND IF IT WAS ACCEPTED, STATE ALL EVIDENCE (MATERIAL, TESTIMONIAL, OCCUPATIONAL, PLATS, RECORD, OTHER MONUMENTS) USED AS A BASIS FOR ESTABLISHING LOCATION. IF NOT ACCEPTED OR IF NOTHING WAS FOUND, STATE EVIDENCE USED AS BASIS FOR ESTABLISHING LOCATION. IF REESTABLISHED THROUGH LOST CORNER PROPORTIONATE METHODS, INDICATE ALL MONUMENTS, DISTANCES AND DIRECTIONS USED TO ESTABLISH. INDICATE TYPE OF MONUMENT AND SIGN POST FOUND OR SET.

October 16, 1915 - D. H. Vaughan, County Surveyor, Old Field Book 8, pages 25 and 26, and Dorr-Vaughan Book, pages 25 and 26. Set post from 3 original bearings and made new W. Pine stump 28" S81°E, 40 1/2 links.

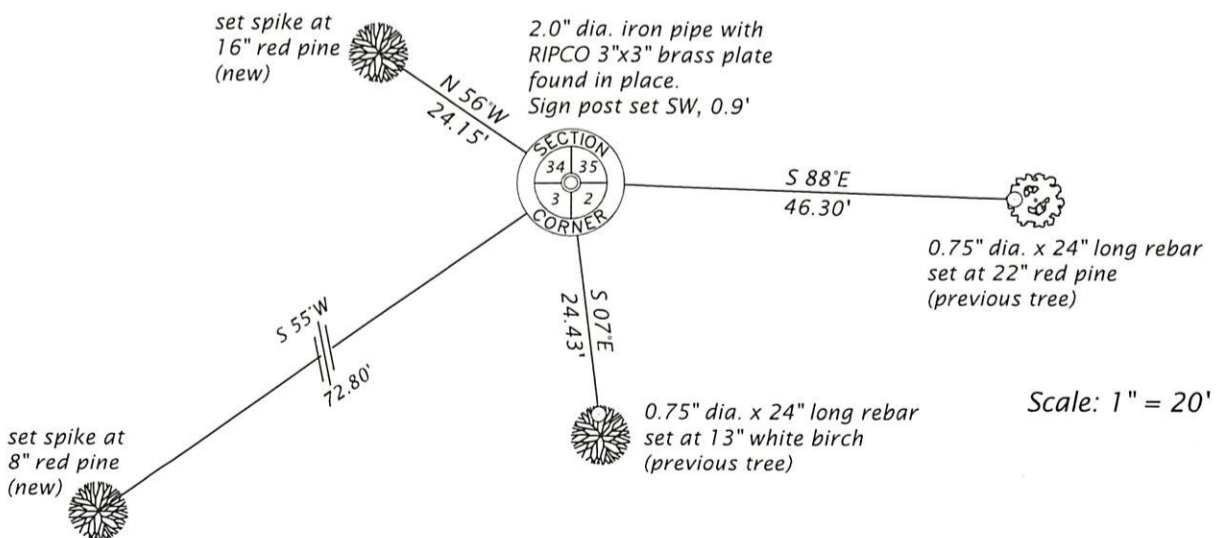
February 26 27, 1958 - Rhinelander Paper Company - Norm Loftus and crew, RIPCO Book 2, page 74, @ monumented corner 40.28 chains west of the 1/4 corner common to Sections 35 and 2, and on line with the corner common to Sections 33-34-4-3. Made BTs: Bw 6" S6°E, 39.5 lks. (26.07) and a Pr 3" S86°E, 74 lks. (48.84)

January 16, 1986 - Todd Loftus, RLS No. 1523, on map of survey filed as B152 in Oneida County Surveyors Office, describes corner monumented by a RIPCO capped iron pipe.

November 15, 2023 - James D. Rein, PLS No. 1234; we recovered a 2" dia. iron pipe with a 3" square RIPCO brass plate, marked to identify the corner and existing RIPCO Bts as shown in plan.

The coordinate value shown has been verified by taped measurements to temporary offset points in clearing to the southeast, satisfying the accuracy requirements defined and qualified in the 2022 Oneida County Fee Schedule for USPLS Corners.

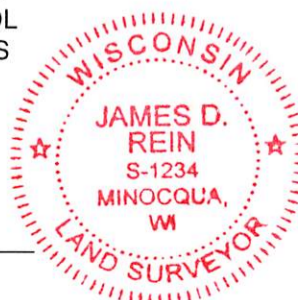
(c)(d)(e) PLAN VIEW OF CORNER WITH TIES TO AT LEAST 4 WITNESS MONUMENTS. IF IN DISAGREEMENT WITH PREVIOUSLY ESTABLISHED CORNER, SHOW THE DISTANCE BETWEEN THE TWO CORNERS AND ALSO INDICATE THE TIES TO THE DISPUTED CORNER.



(i) I, JAMES D. REIN, PROFESSIONAL LAND SURVEYOR NO. S-1234 HEREBY CERTIFY THAT THE CORNER LOCATION ON THIS RECORD WAS DETERMINED BY ME OR UNDER MY DIRECTION AND CONTROL AND THAT THIS U.S. PUBLIC LAND SURVEY MONUMENT RECORD IS CORRECT AND COMPLETE TO THE BEST OF MY KNOWLEDGE AND BELIEF.

*James D. Rein*  
 SIGNATURE

12-27-23  
 DATE



INDEX NO. A - 17

3810340000